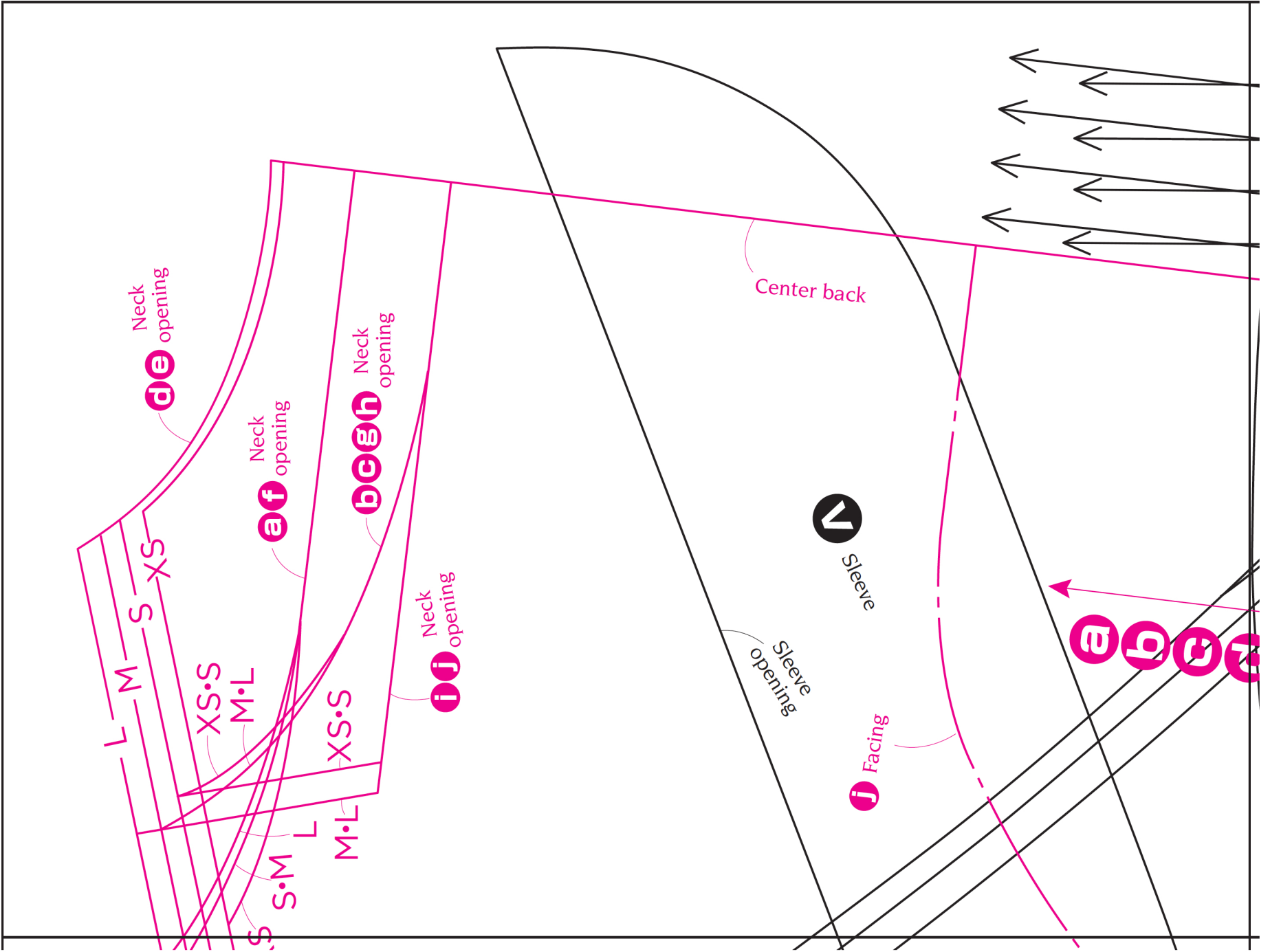
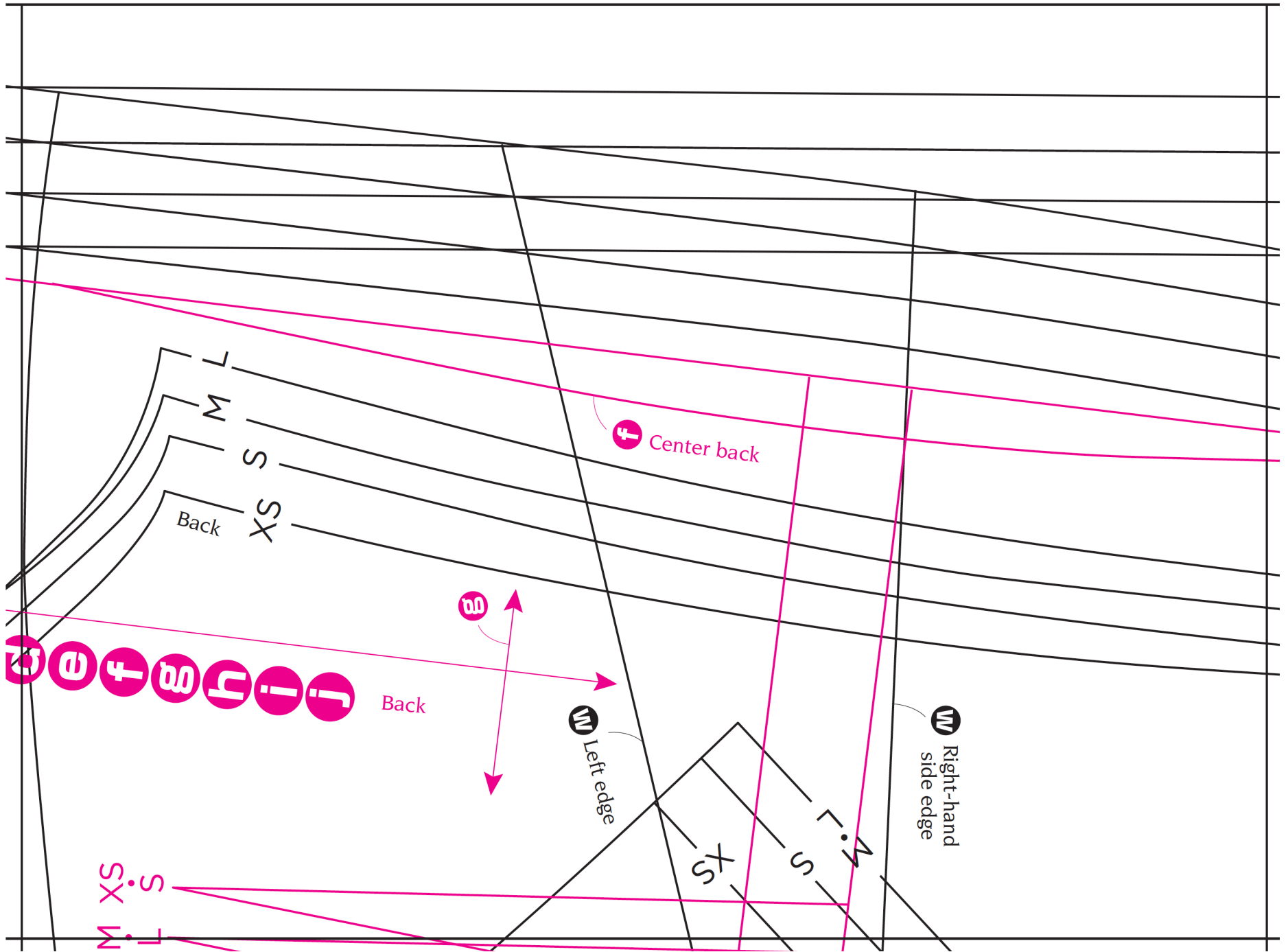


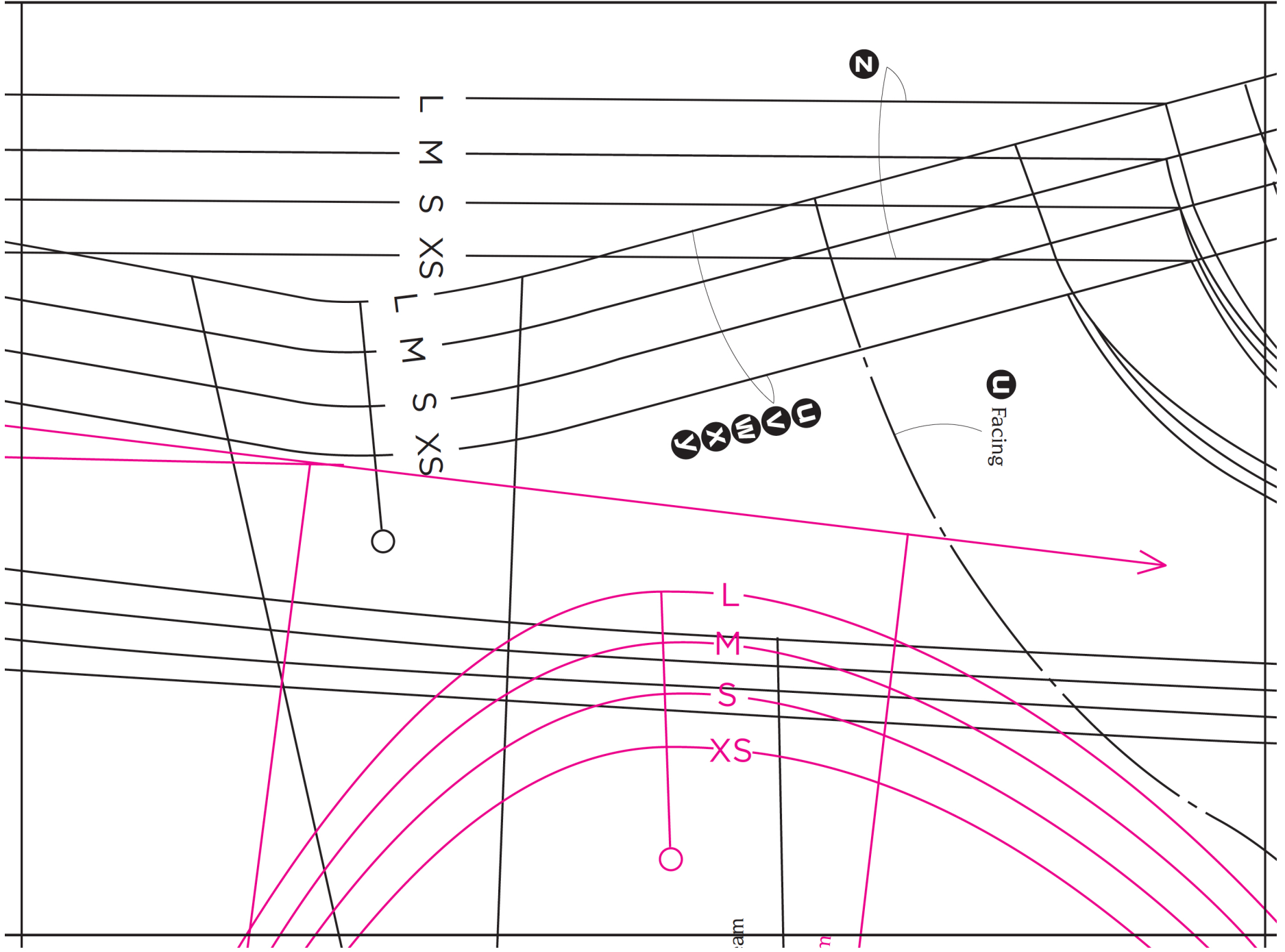
A1



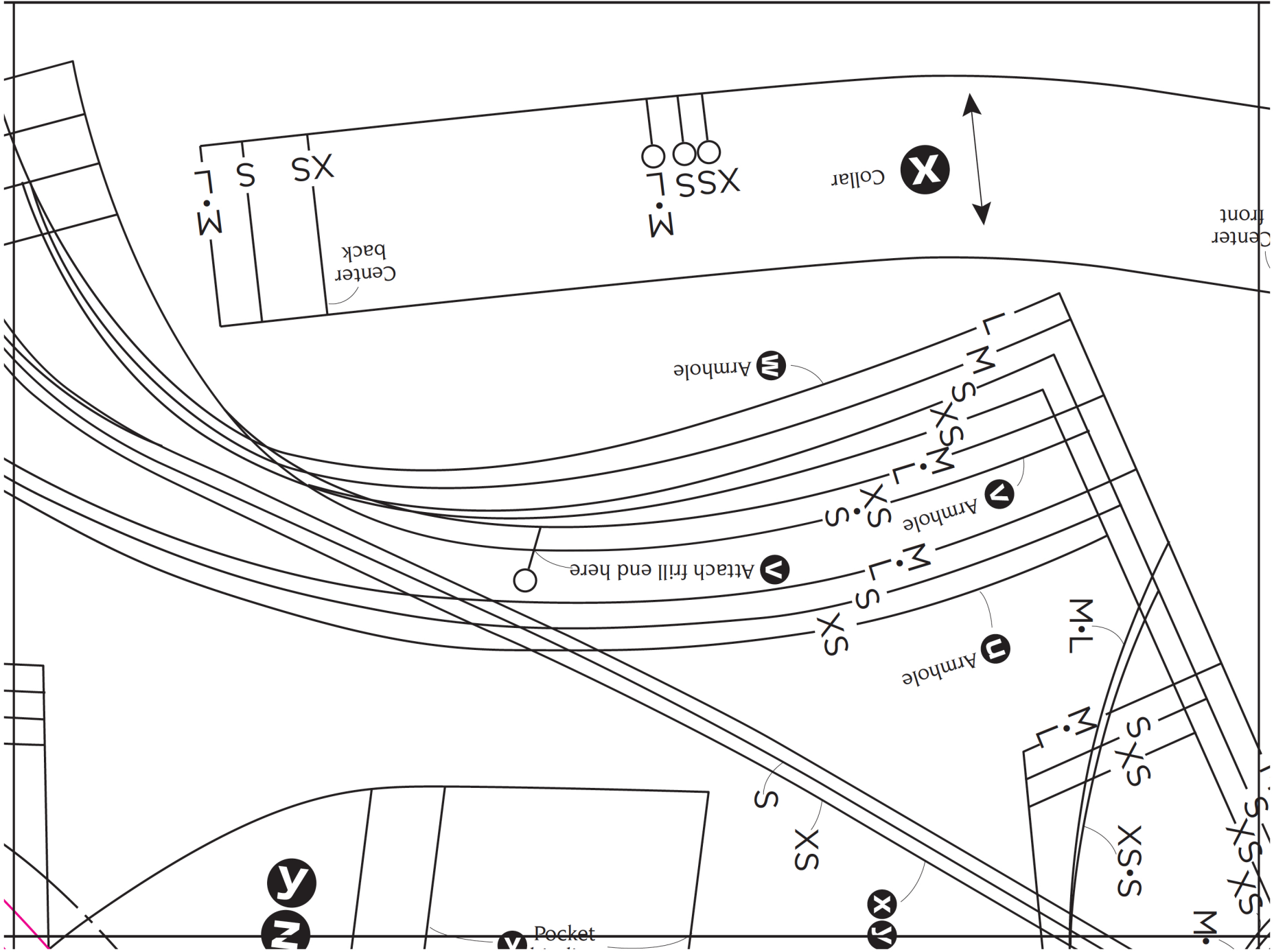
A2



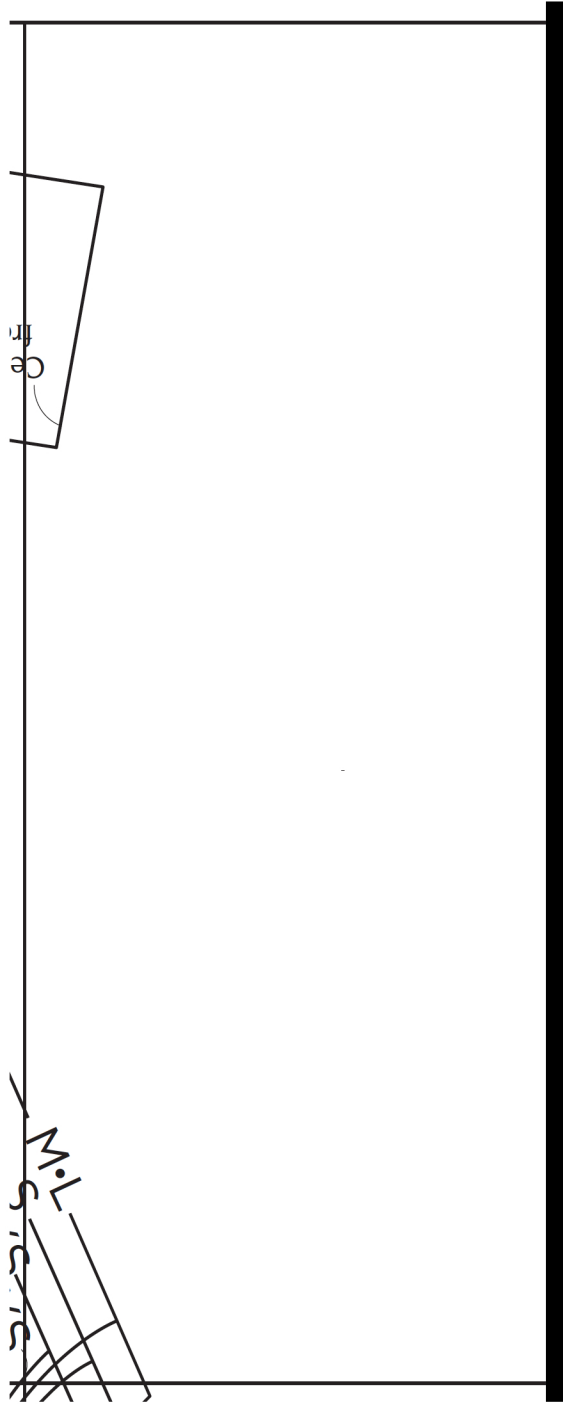
A3



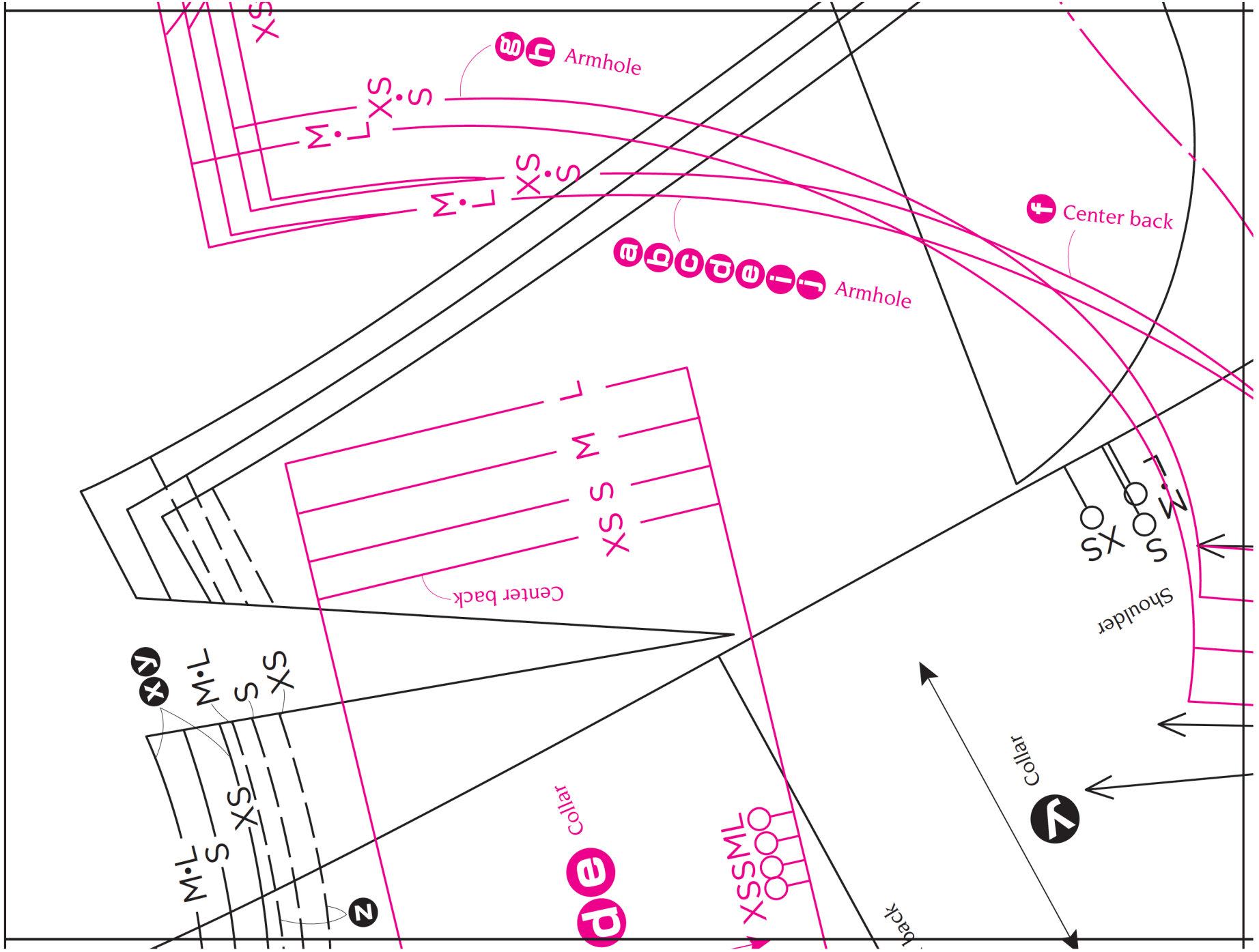
A4



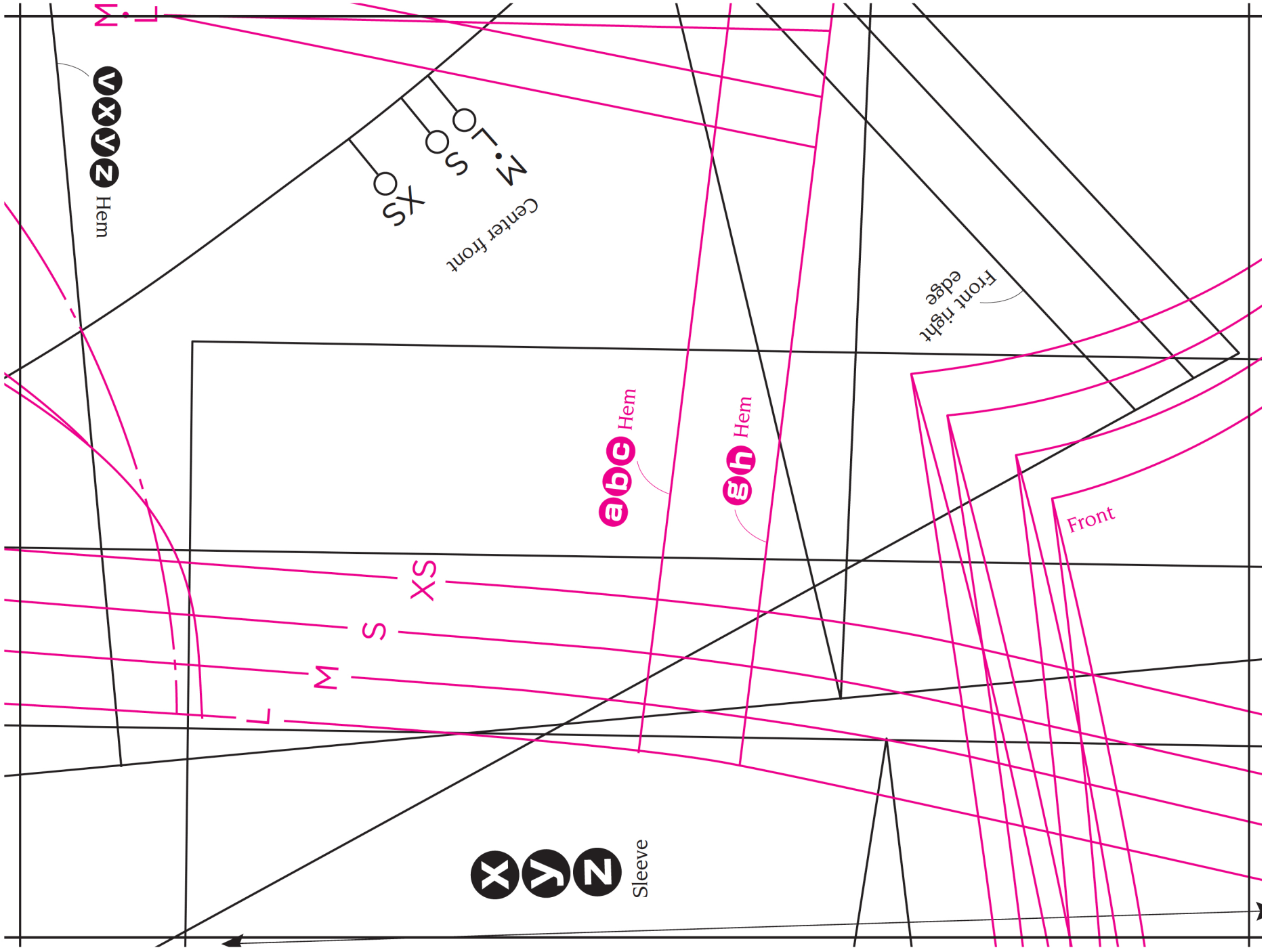
A5



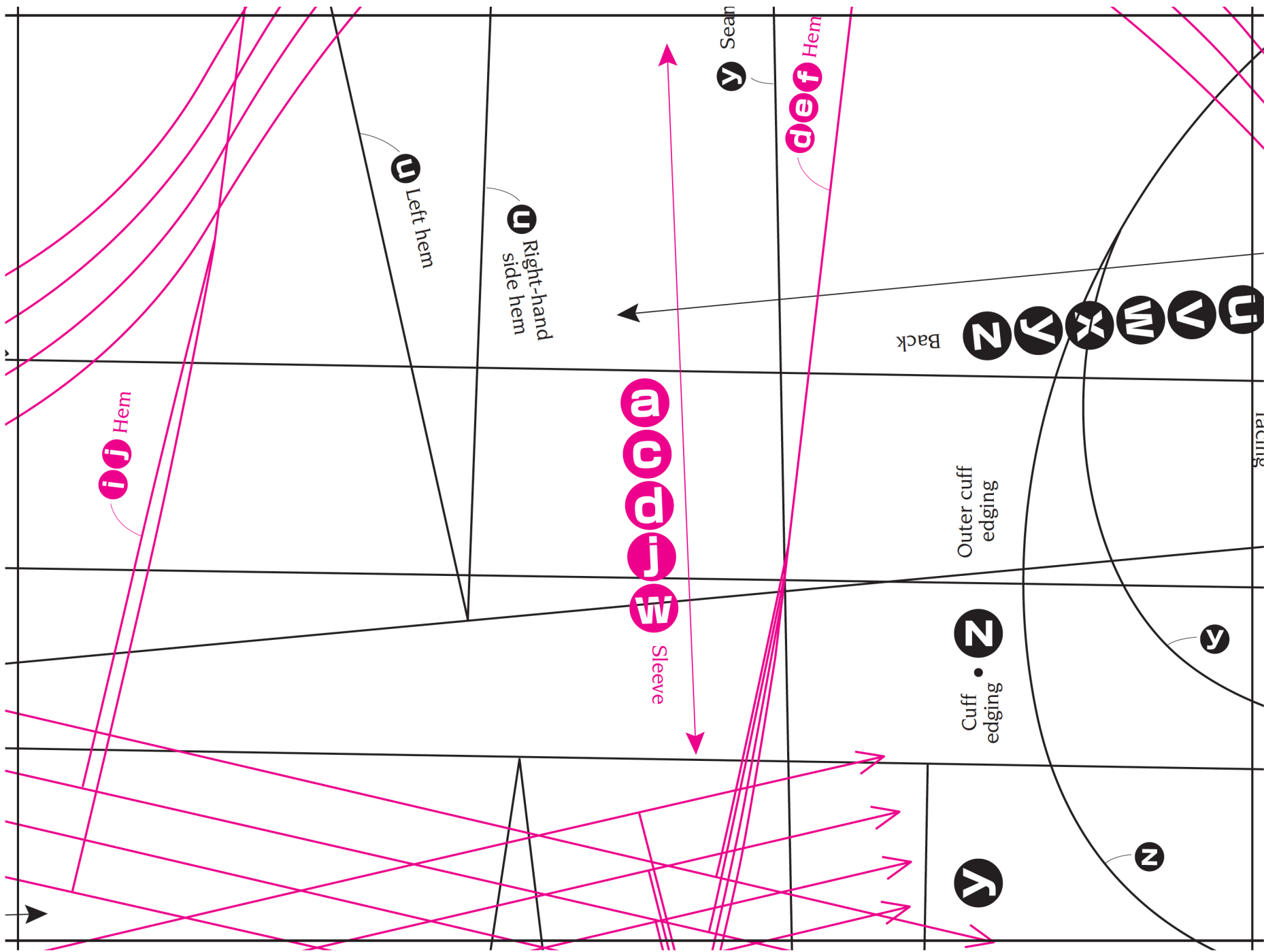
B1



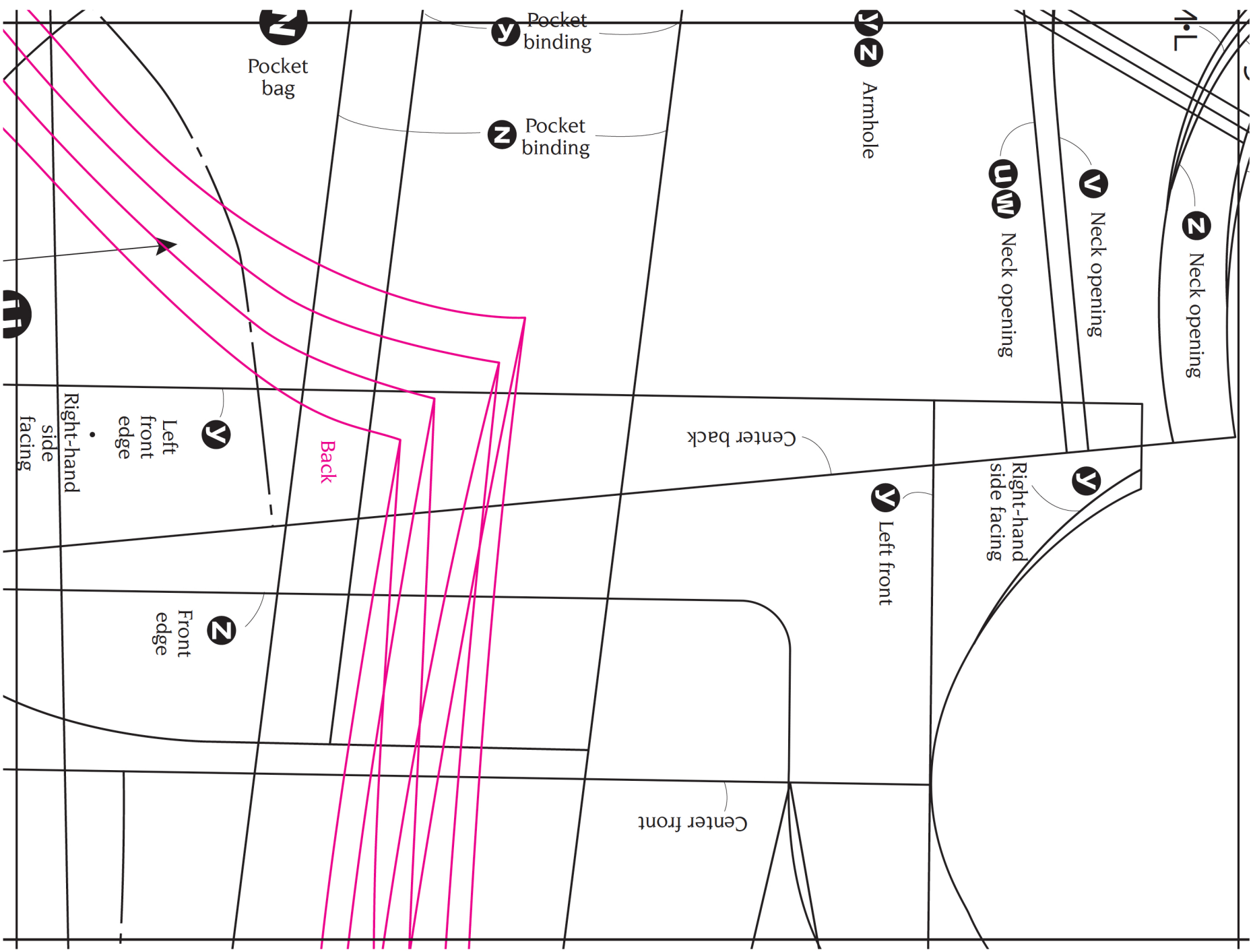
B2



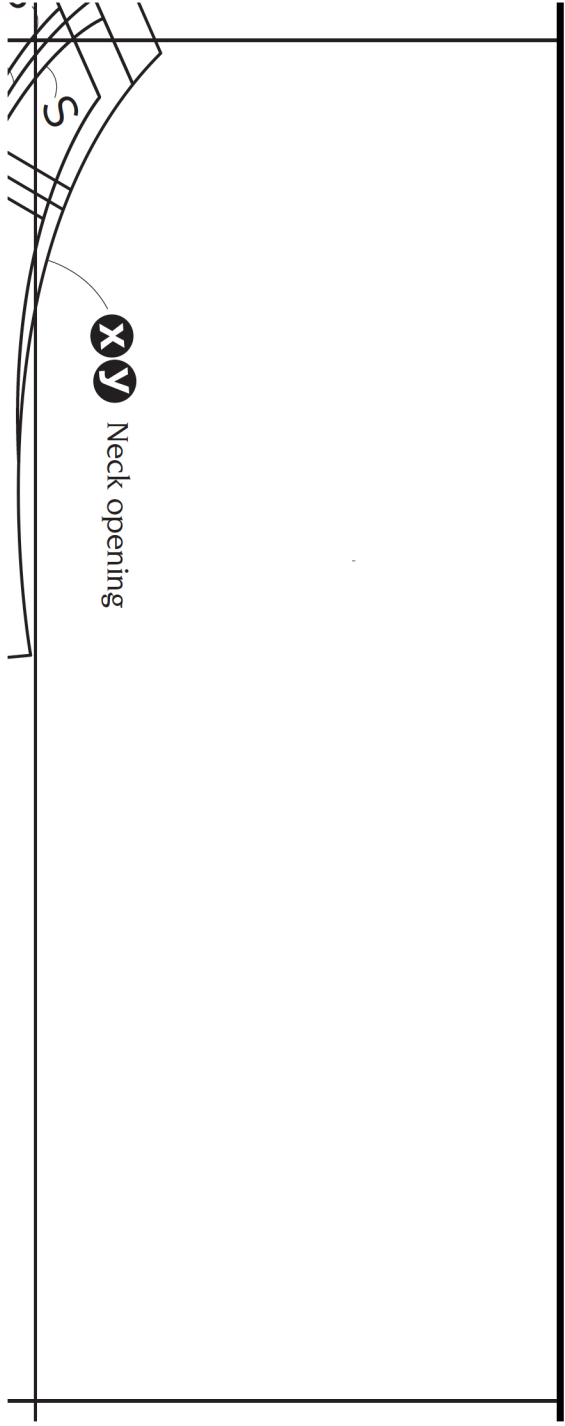
B3



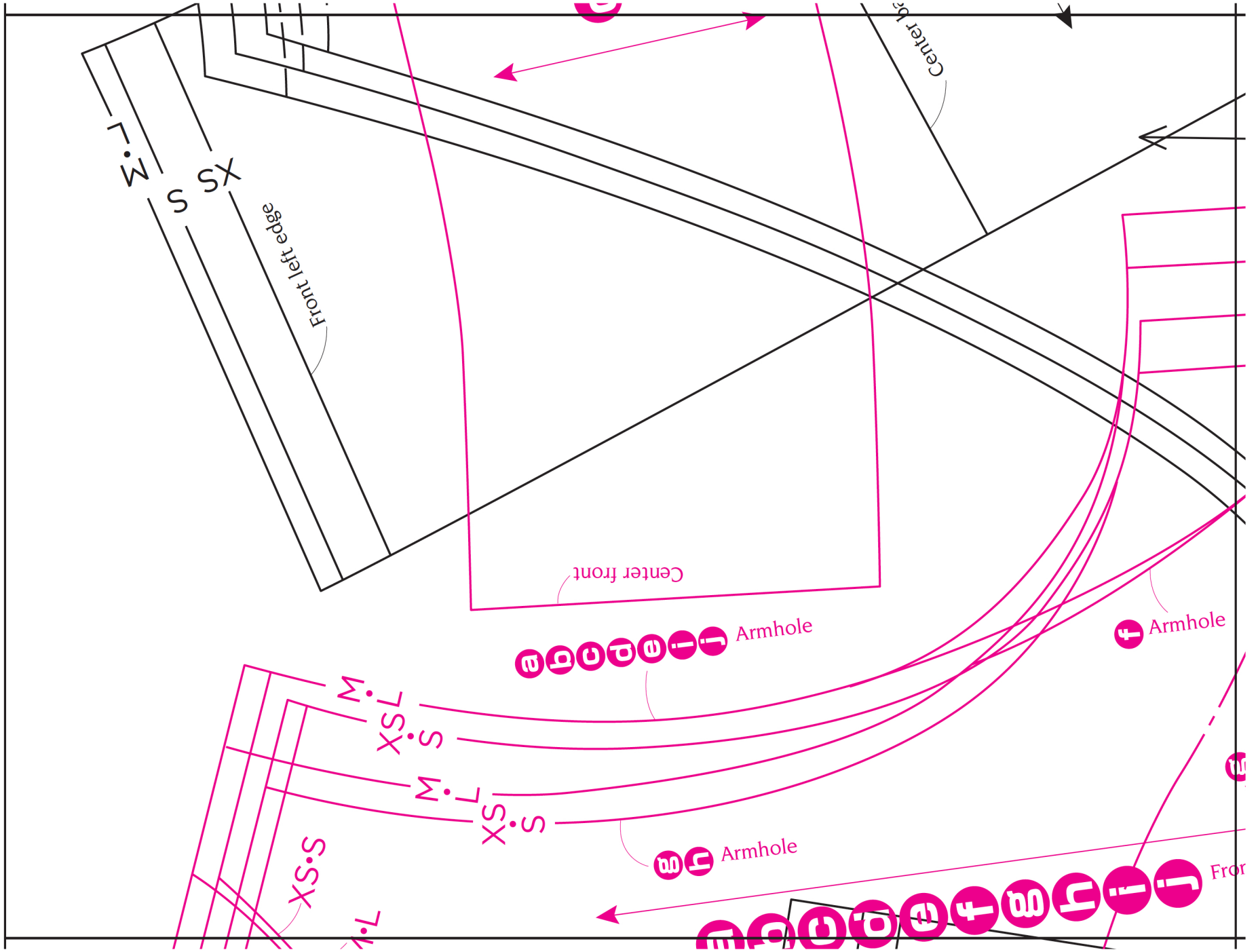
B4



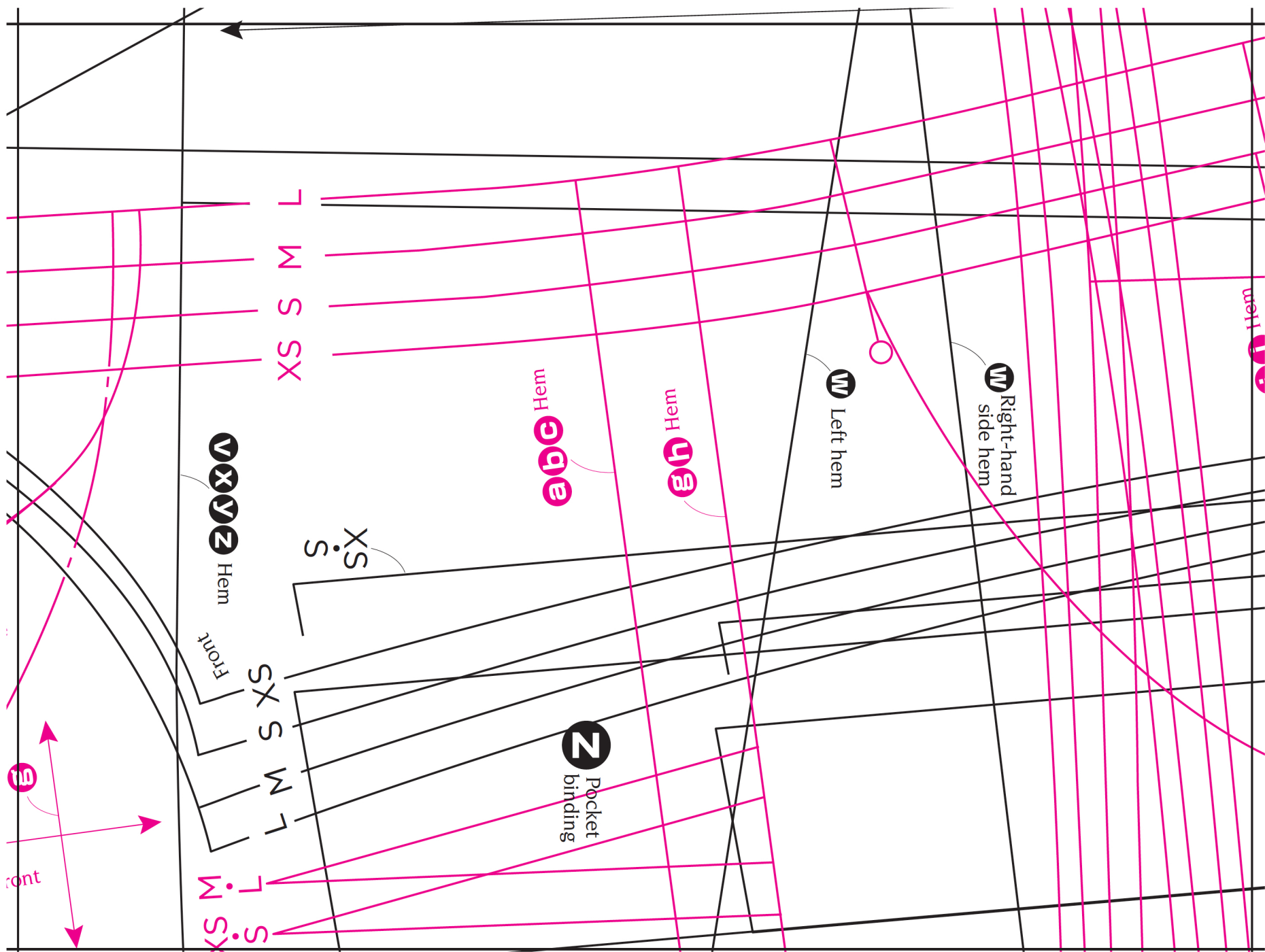
B5



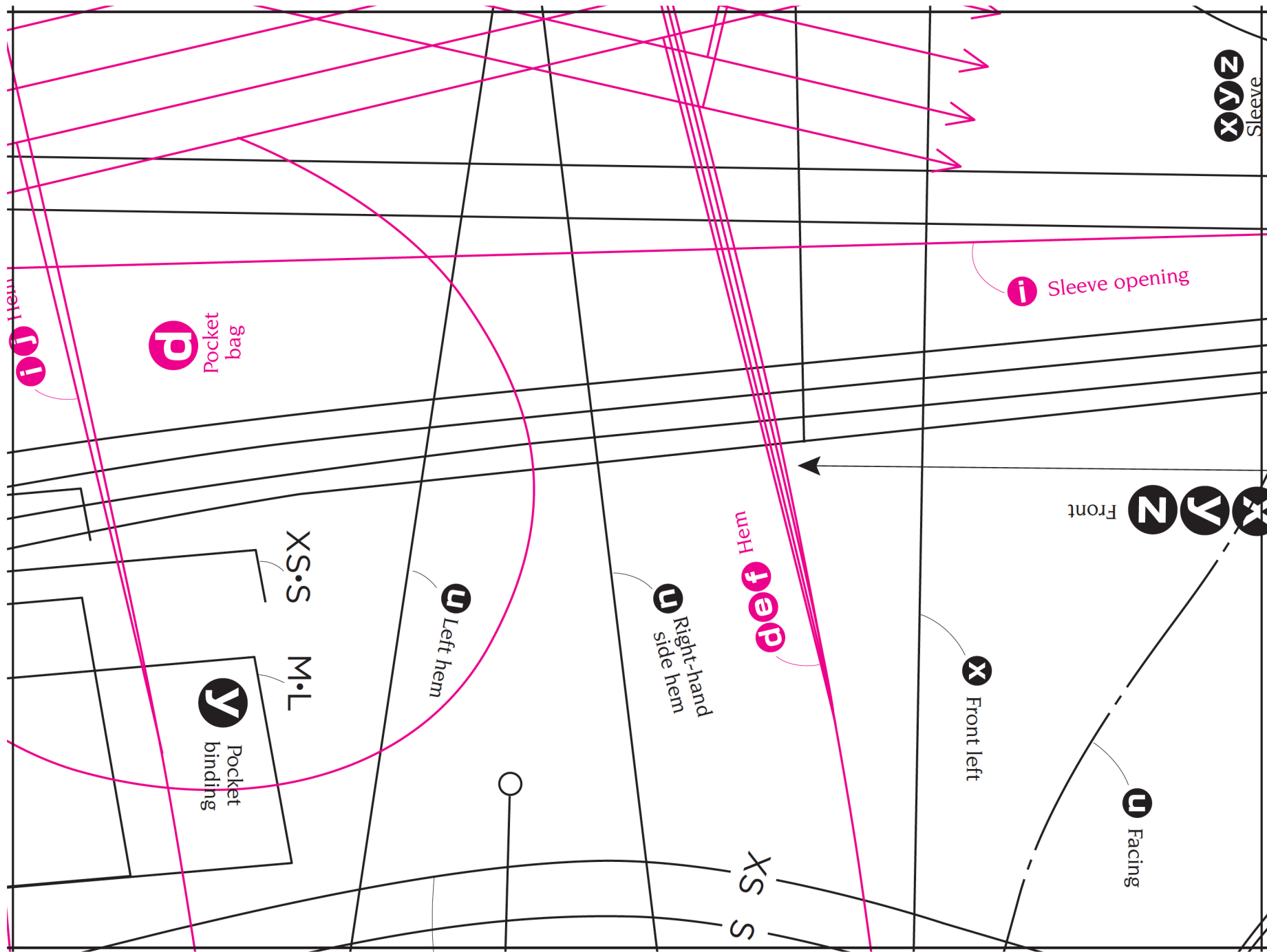
C1



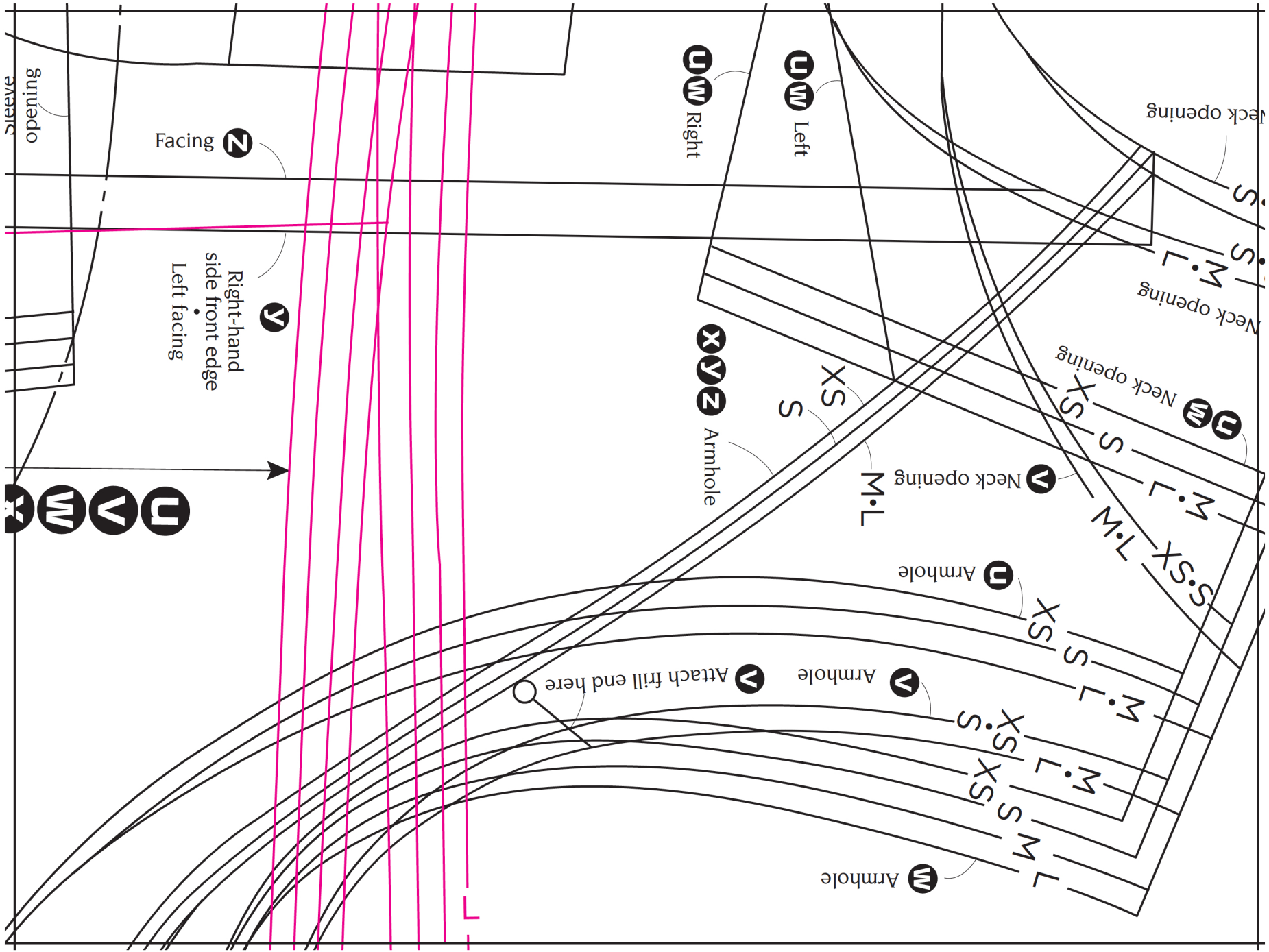
C2



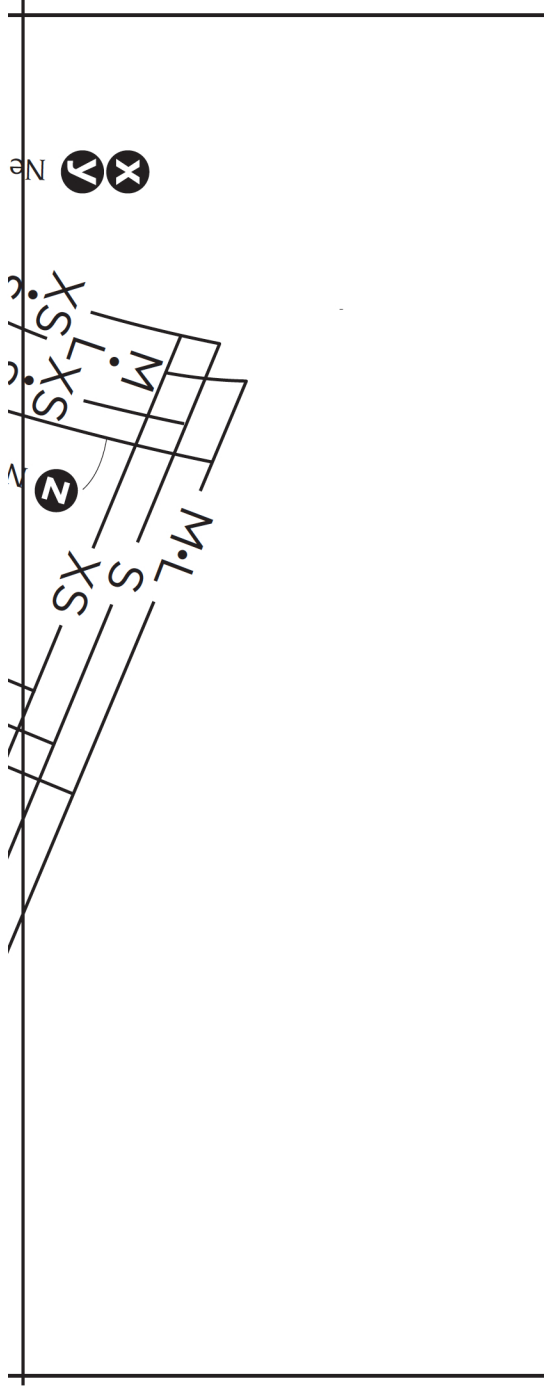
C3



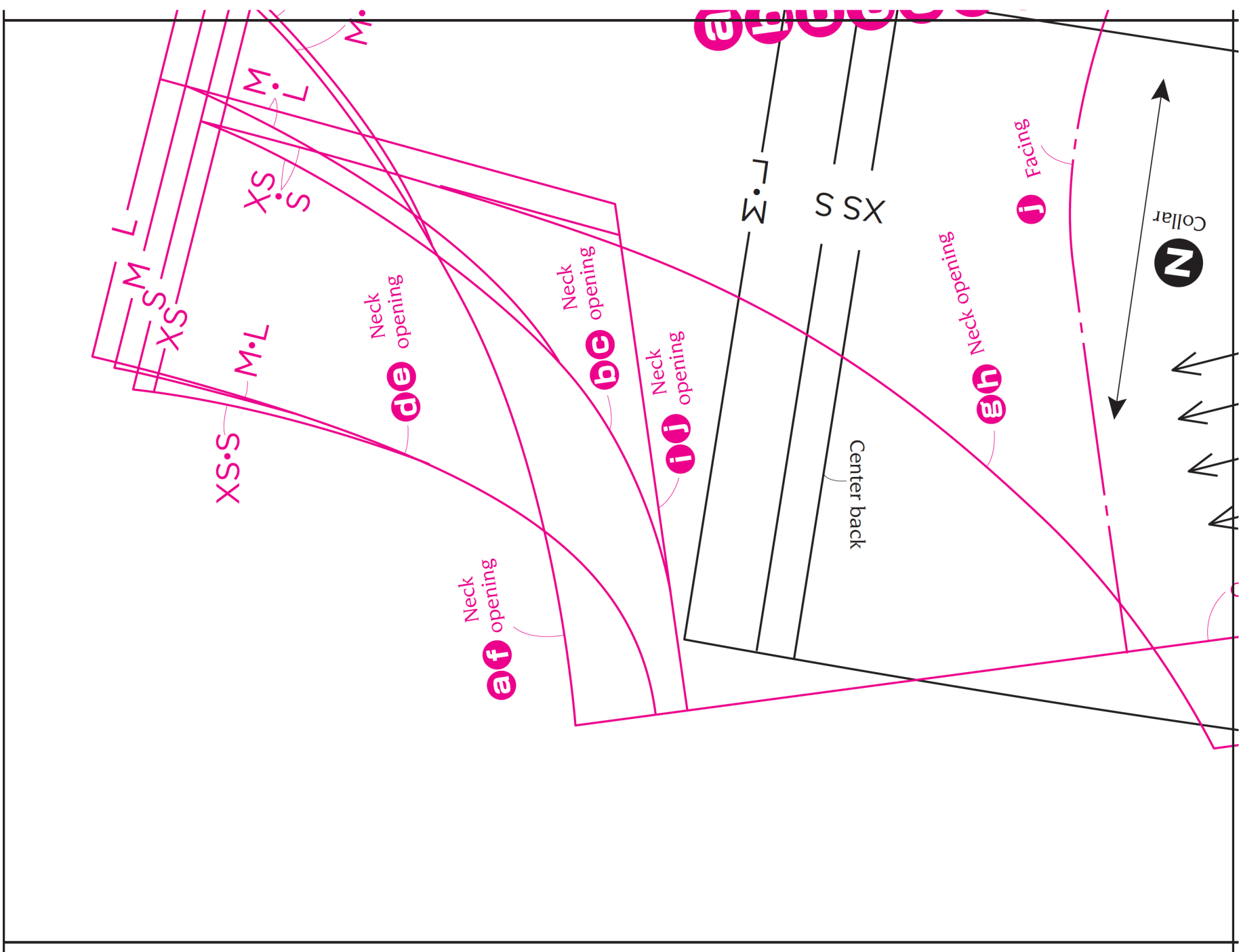
C4



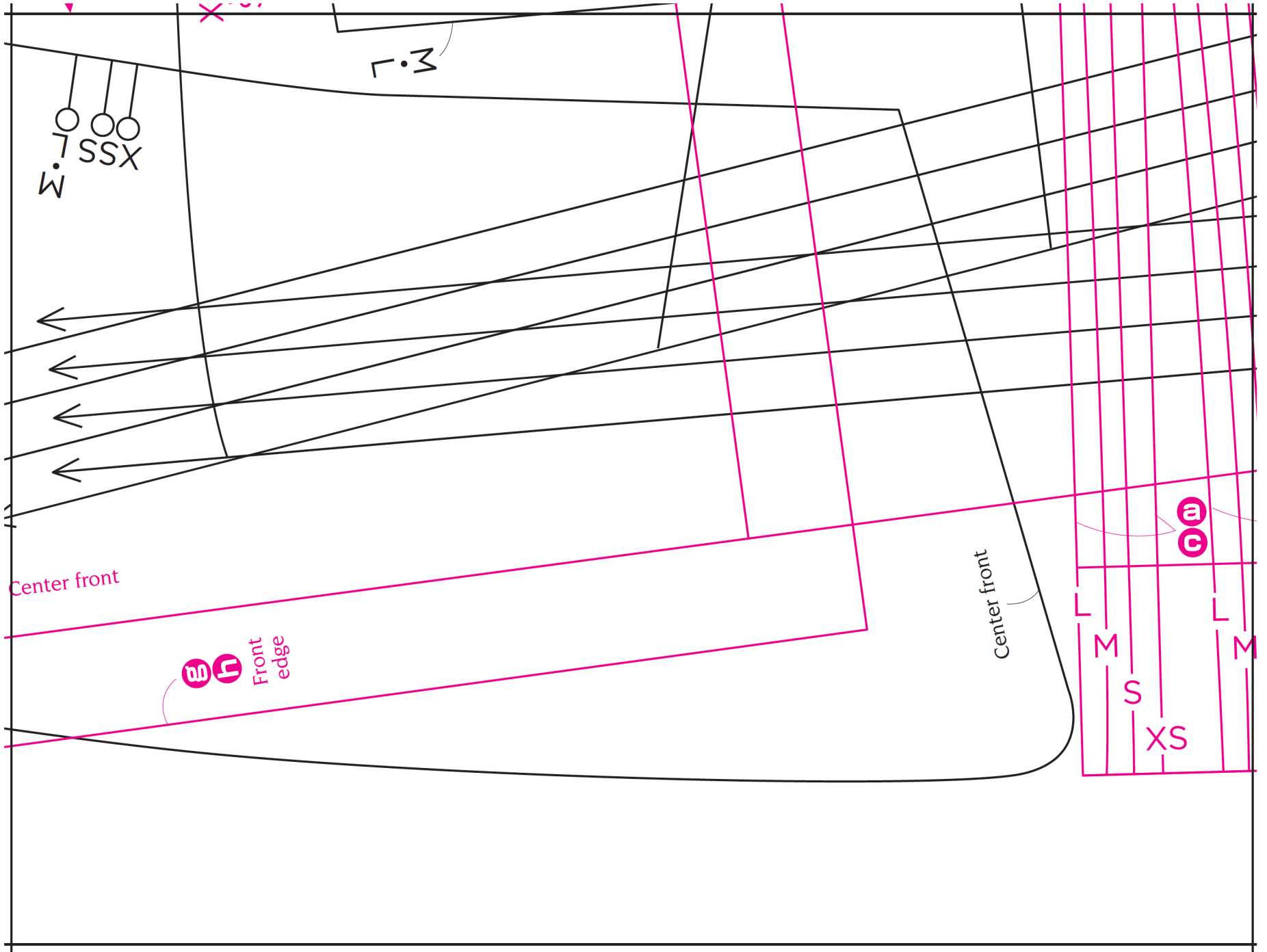
C5



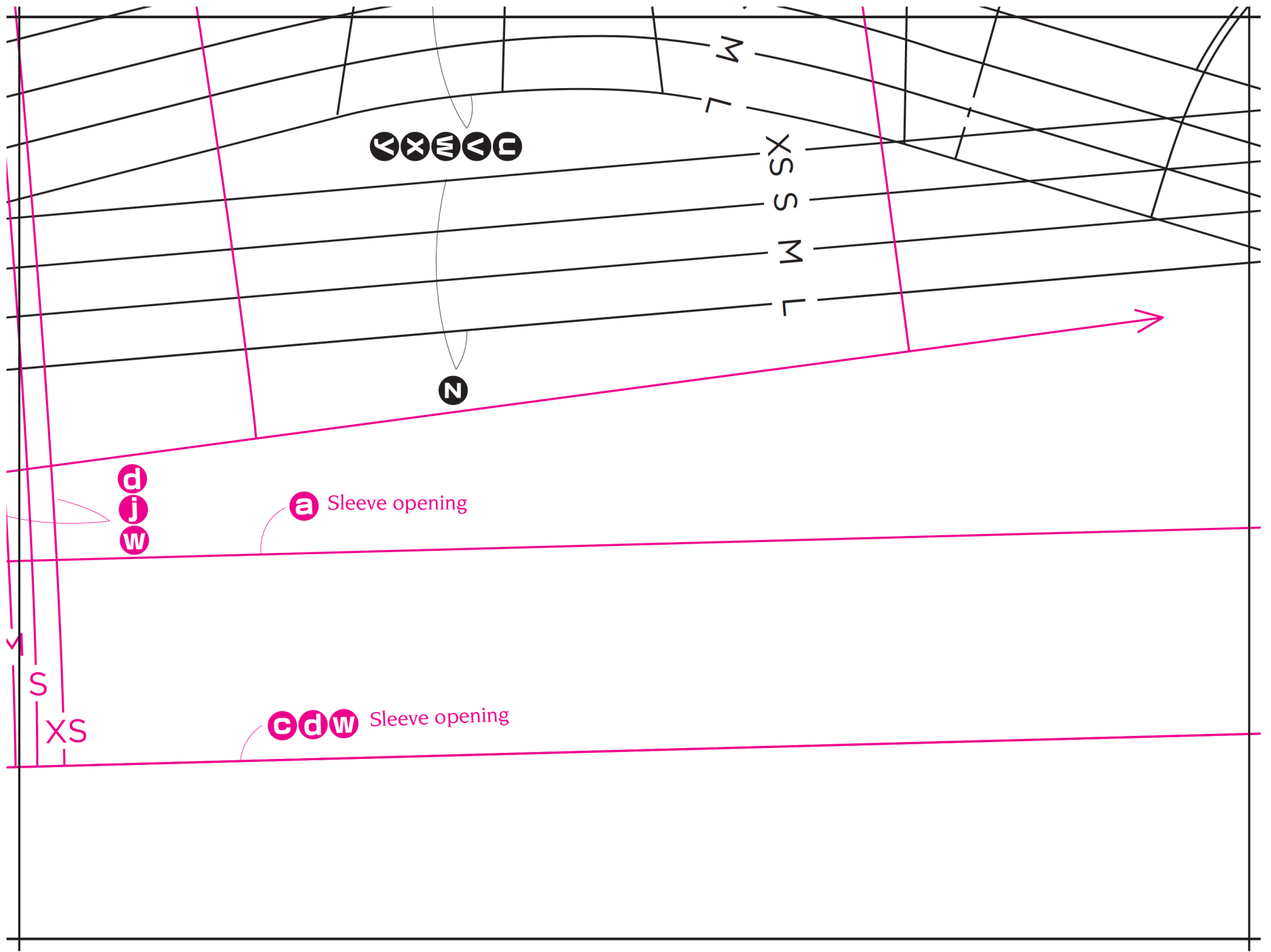
D1



D2



D3



Basic Black

A SIDE

■ **Patterns on this side:**
a,b,c,d,e,f,g,h,i,j,u,v,w,x,y,z

■ **How to use patterns**
Do not cut the patterns out from the sheet. Seam allowances are not included. See p34-35 for further details.

■ **About sizing**
All garments in this book are presented in four sizes - XS, S, M and L. The measurements given are for the finished garment (units are in inches, with centimeters in parentheses).

■ a,b,c,d,e,f,g,h,i,j

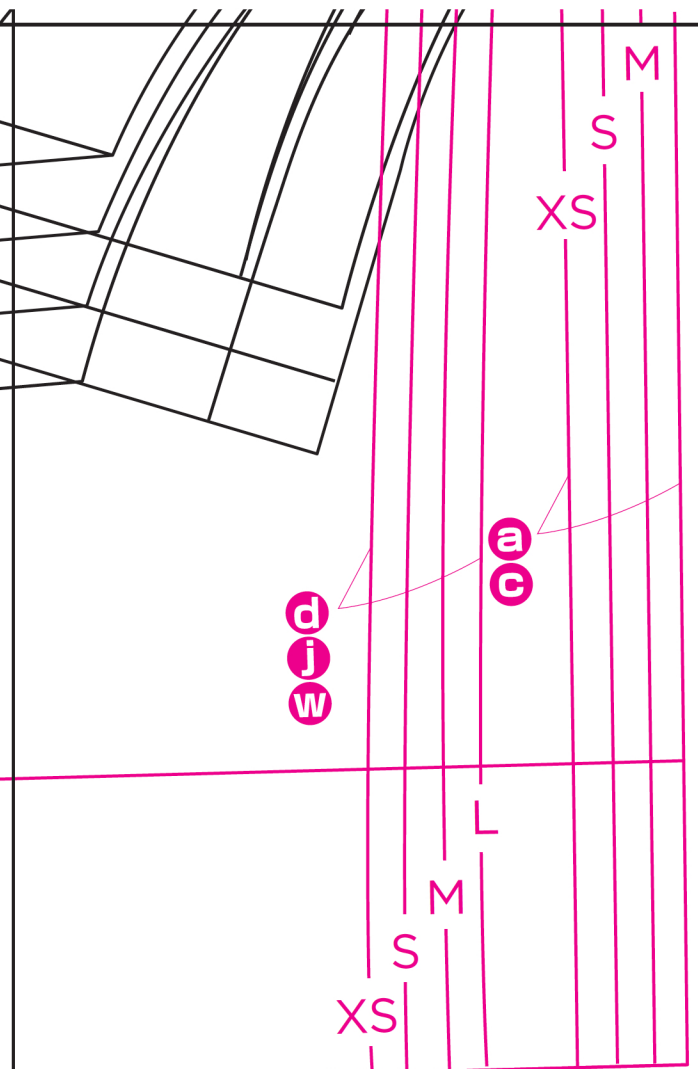
	XS	S	M	L
B=bust	a-j 36 (91)	37½ (95)	39 (99)	40½ (103)
W=waist	a-e,g,i,j 34½(88)	36¼ (92)	37¾ (96)	39¼ (100)
	f 33¾(86)	35½ (90)	37 (94)	38½(98)
H=hip	h 32½(83)	34¼ (87)	36 (91)	37½ (95)
	f 37½ (95)	39 (99)	40½ (103)	42½ (107)

■ u,v,w,x,y,x

	XS	S	M	L
B=bust	u-z 36¼ (92)	37¾ (96)	39¼ (100)	41 (104)
W=waist	u-y 32¼ (82)	33¾ (86)	35½ (90)	37 (94)
	z 39 (99)	40½ (103)	42½ (107)	43¾ (111)
V=x,y	39¾ (101)	41½ (105)	43 (109)	44½ (113)
H=hip	z 42½ (107)	43¾ (111)	45¼ (115)	467½ (119)

*Please be aware that printing and paper conditions may cause variations in measurements.

© 2005 Sato Watanabe
Original Japanese edition published in 2005 by Kawade Shobo Shinsha, Ltd., Publishers, Japan
English Translation © 2014
Periplus Editions (HK) Ltd
Printed in Malaysia 1404TW



D4

D5

