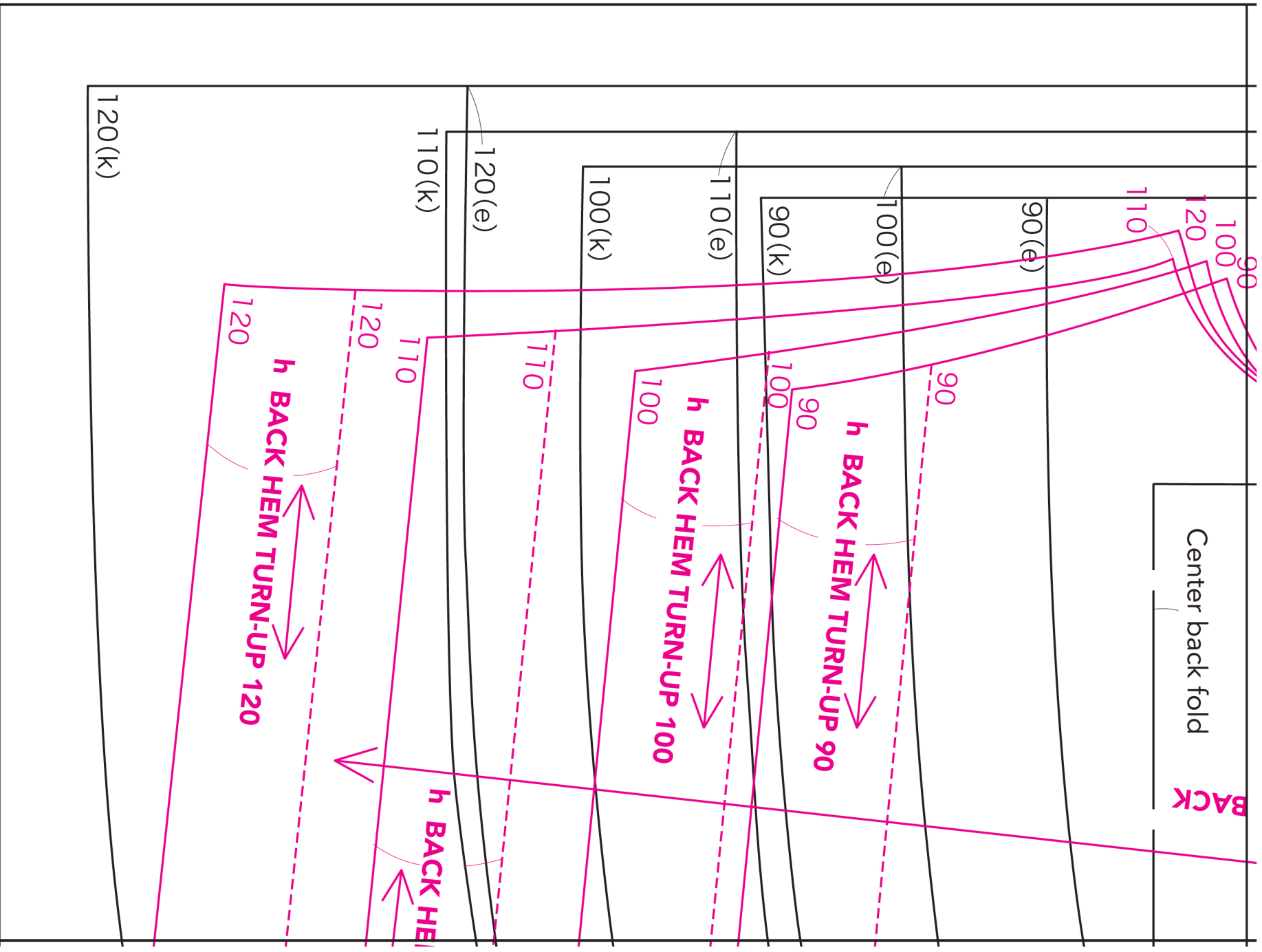
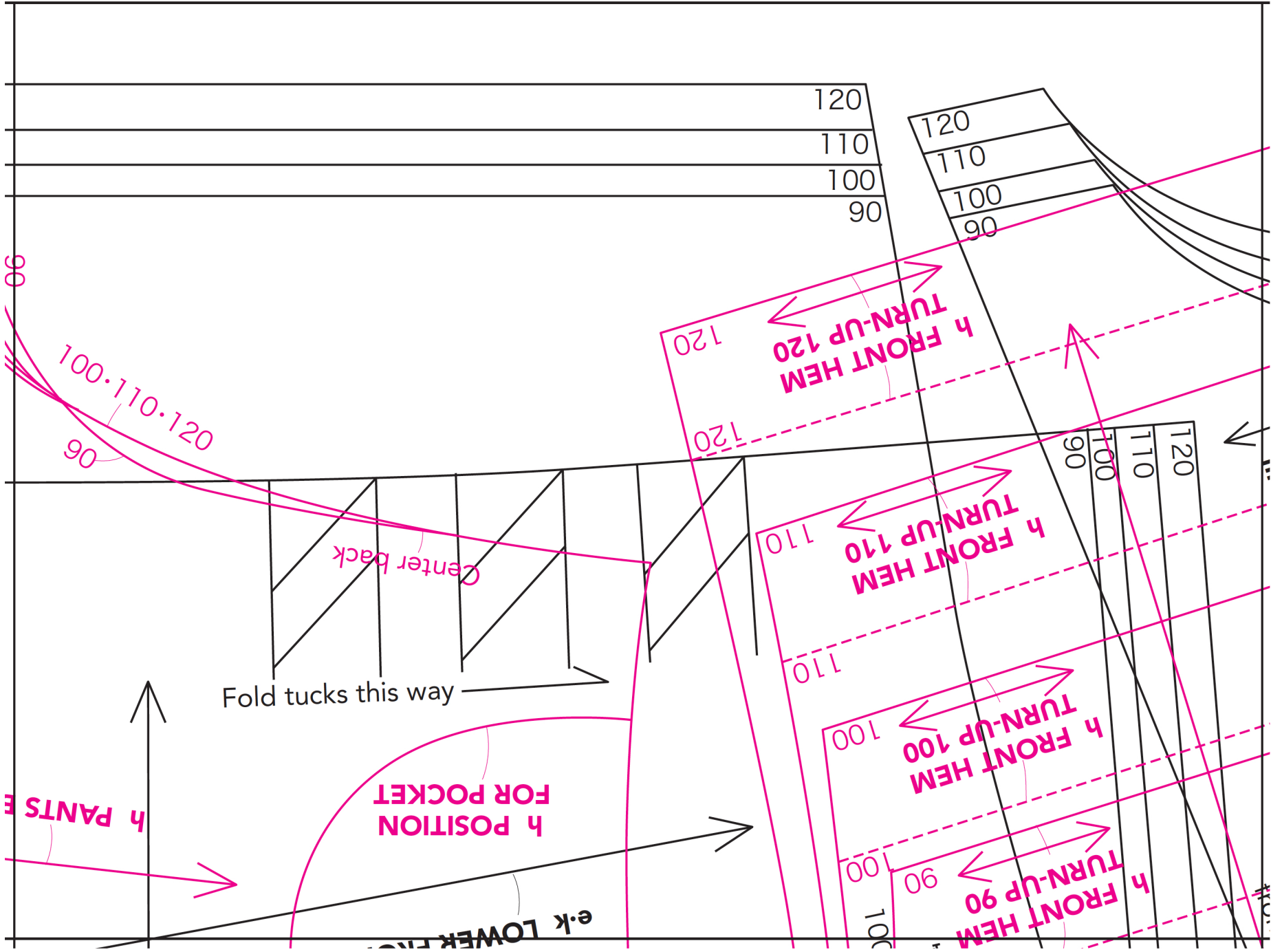


A1

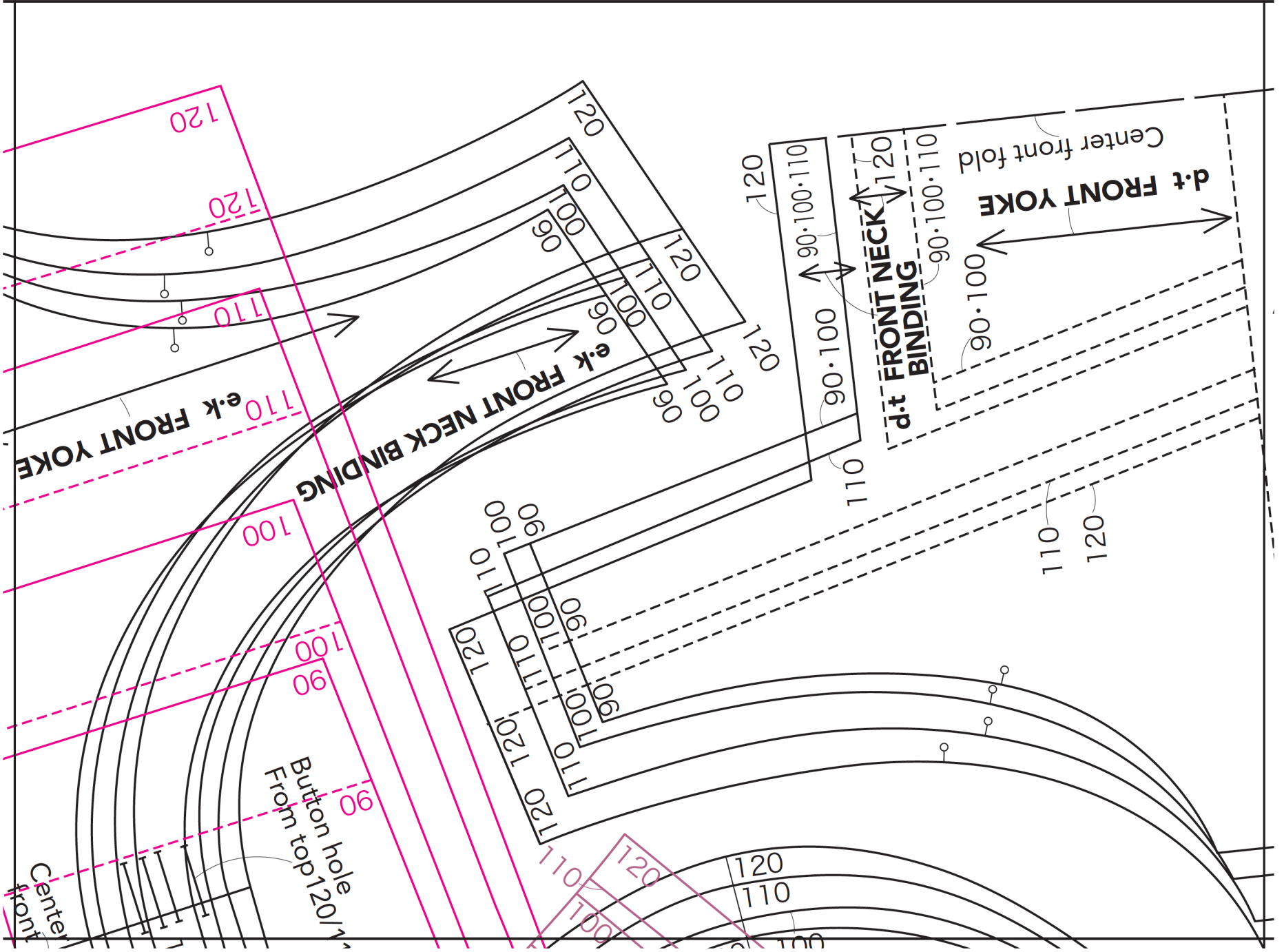


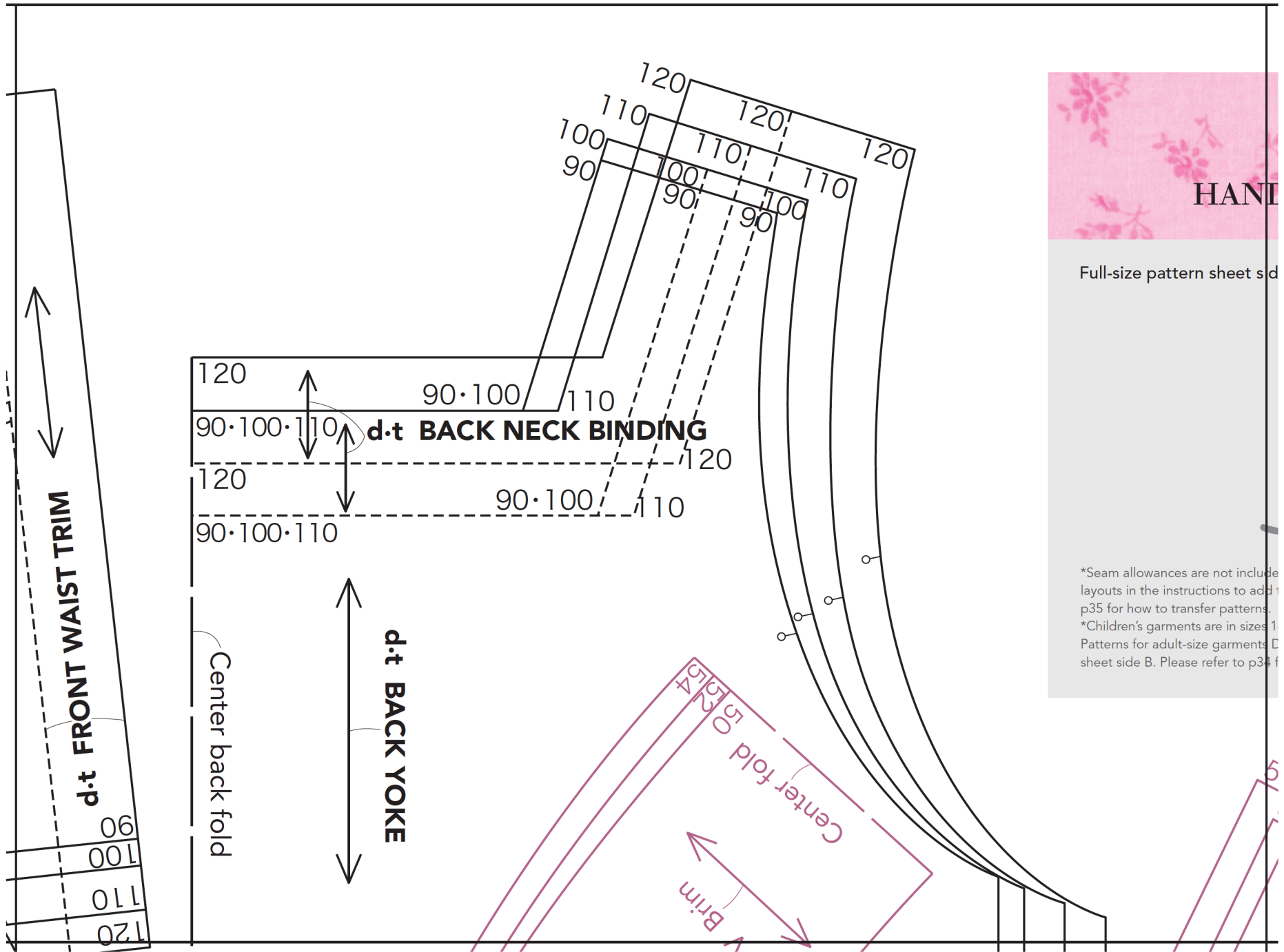
# A2





A3





HANI

Full-size pattern sheet side

\*Seam allowances are not included in the instructions to add 1 cm (3/8") to the pattern pieces.  
p35 for how to transfer patterns.  
\*Children's garments are in sizes 1-12.  
Patterns for adult-size garments are on sheet side B. Please refer to p34 for instructions.

# SEW SWEET

## HOMEMADE CLOTHES FOR GIRLS

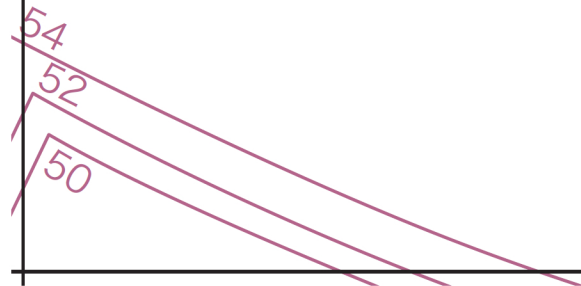
side

A

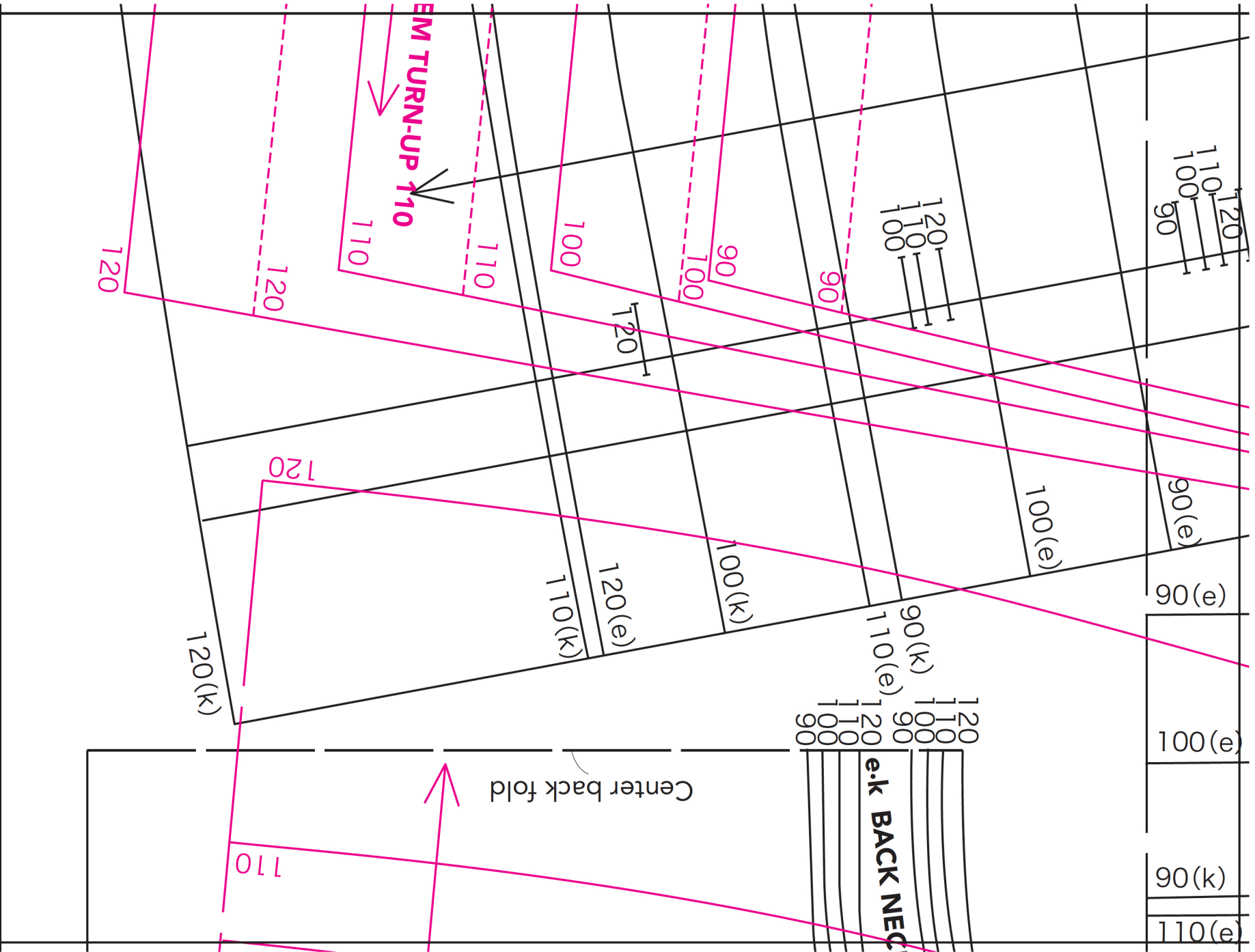
- a, u Camisole
- b, f A-line Skirt
- d Square-neck Smocks (children's size)
- e U-neck Blouse
- h Pants with Turned-up Hems
- j Leggings in Knit Fabric
- k U-neck Tunic (children's size)
- m Camisole Dress
- n Leggings in Knit Fabric
- t Square-neck Dress
- v Reversible Hat

ded. Please refer to the drafting  
 the seam allowances. Please see  
 15.  
 1-2 (90)/3-4 (100)/5-6 (110)/7-8 (120).  
 D and K are on full-size pattern  
 34 for sizing details.

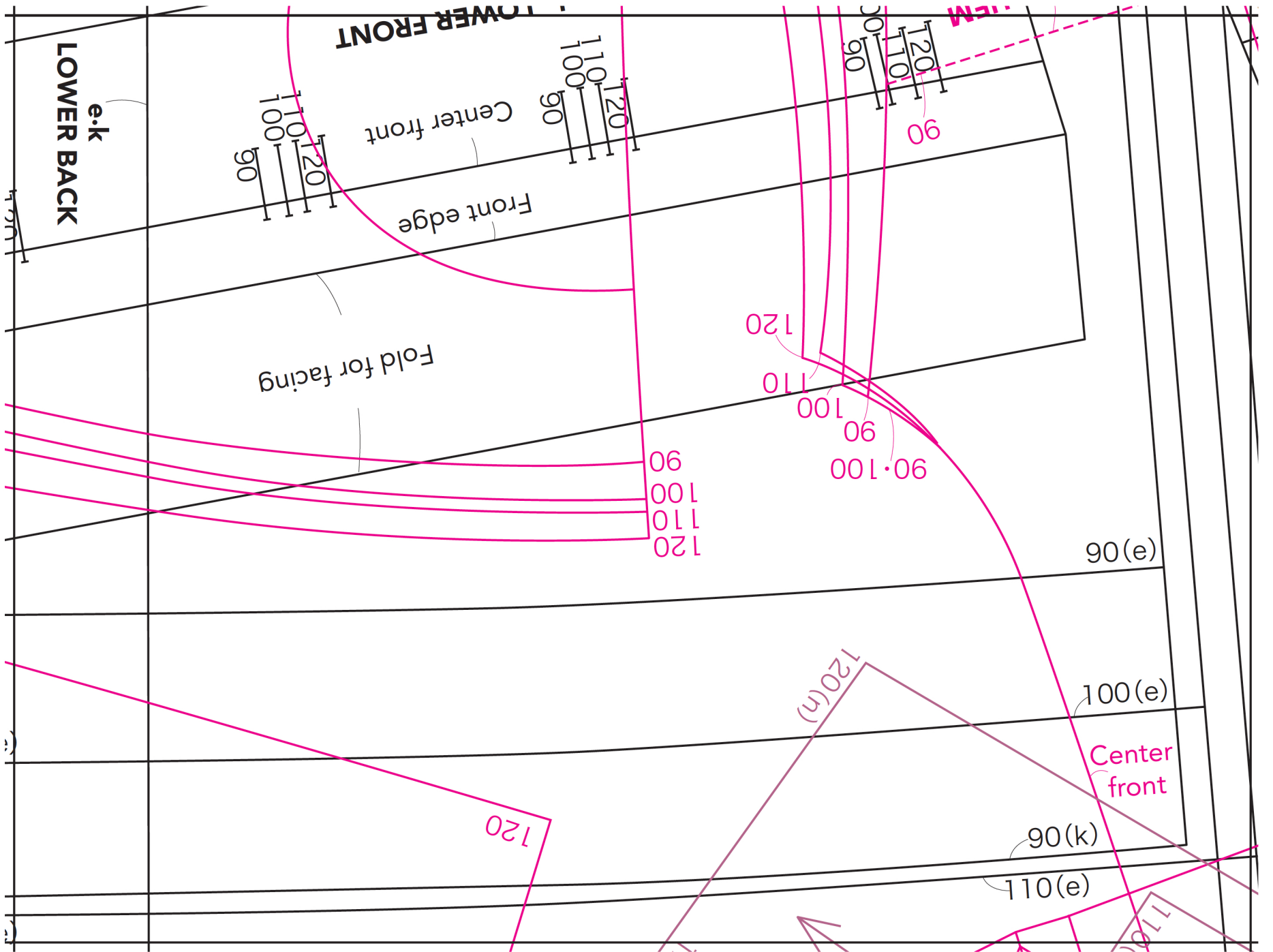
\*Please be aware that printing and paper conditions  
 may cause variations in measurements.  
 © 2007 Yuki Araki/NIHON VOGUE-SHA  
 English Translation © 2014 Periplus Editions (HK) Ltd  
 Printed in Malaysia 1407TW



**B1**

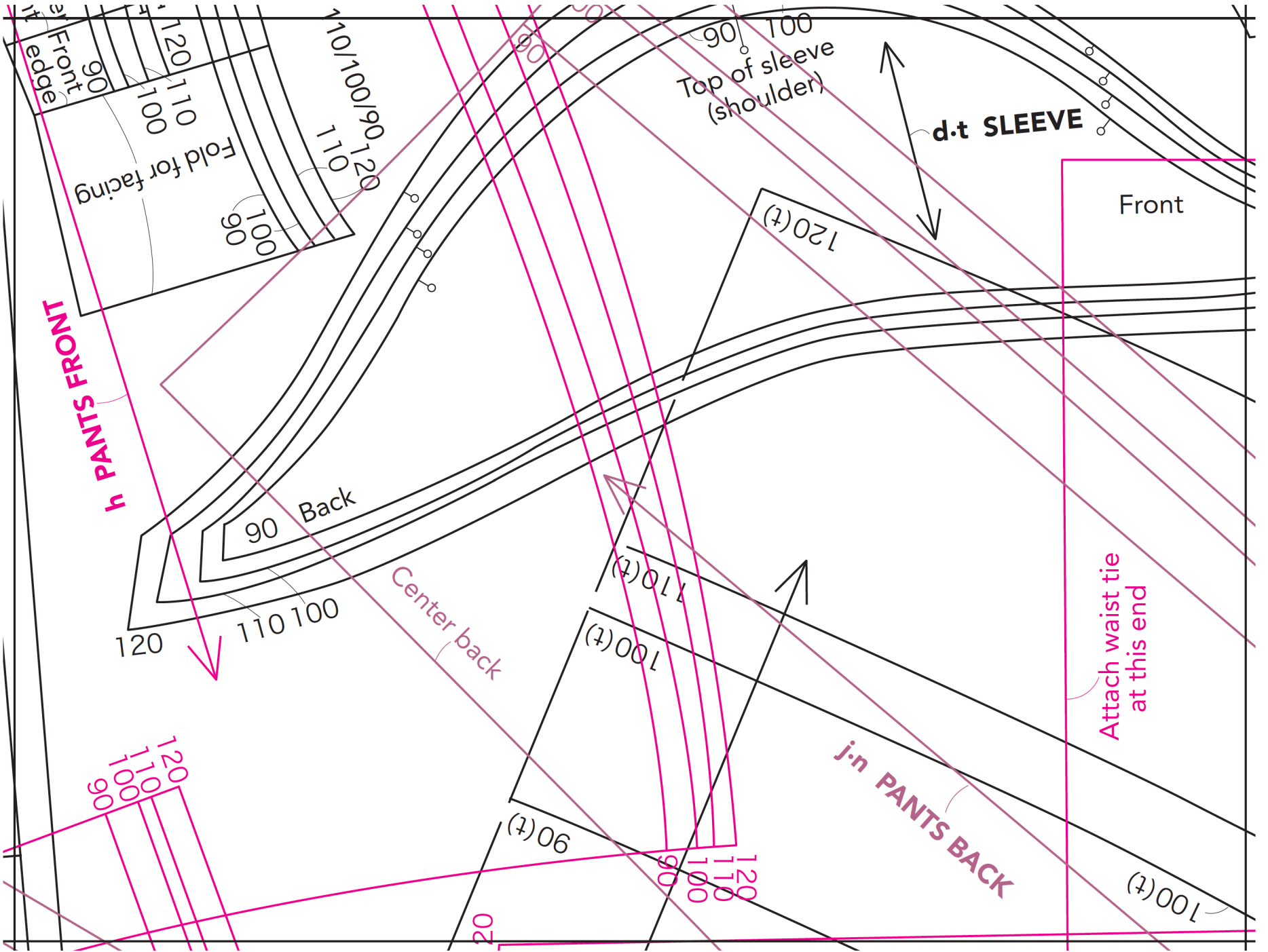


**B2**



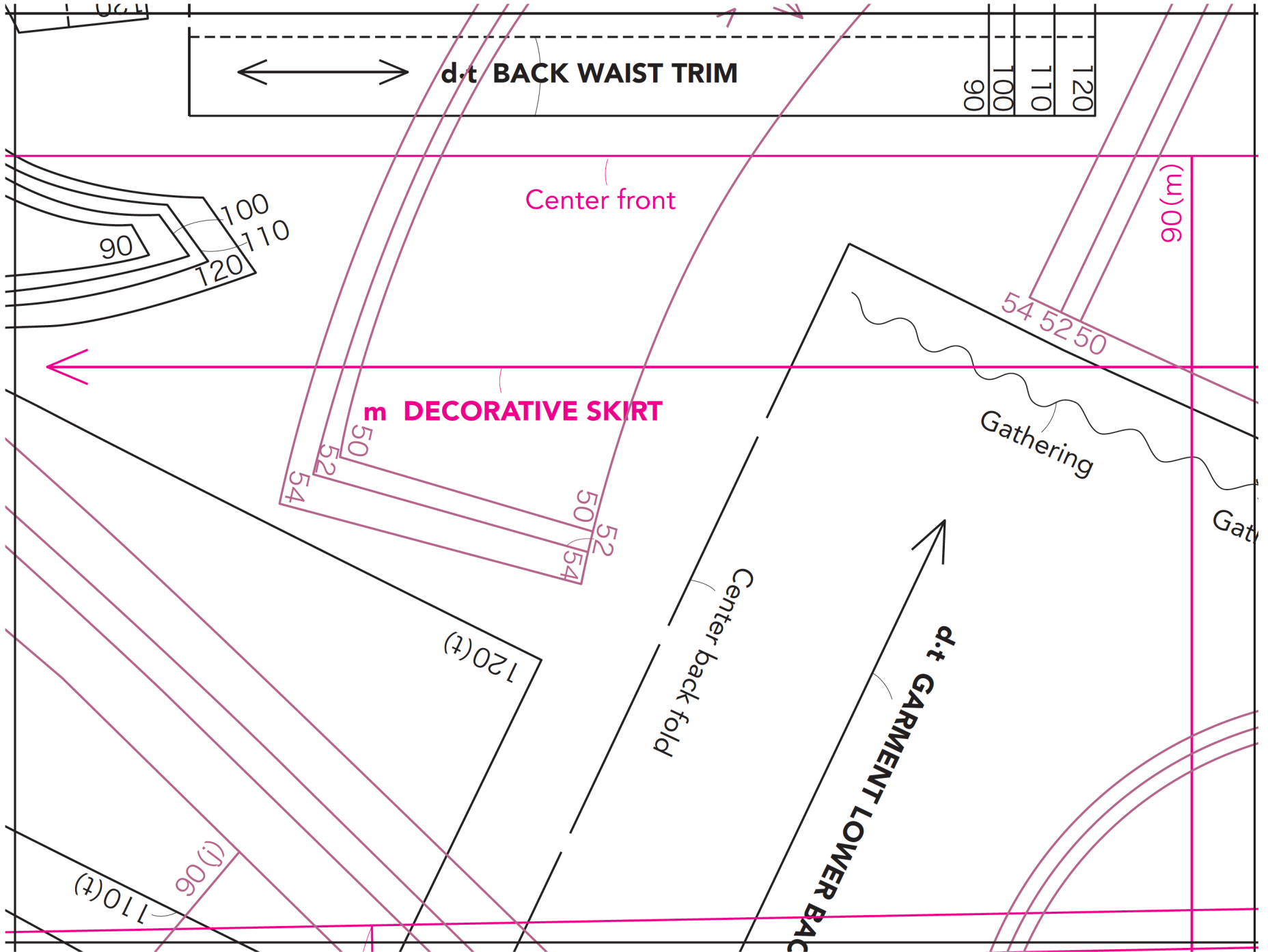


**B3**

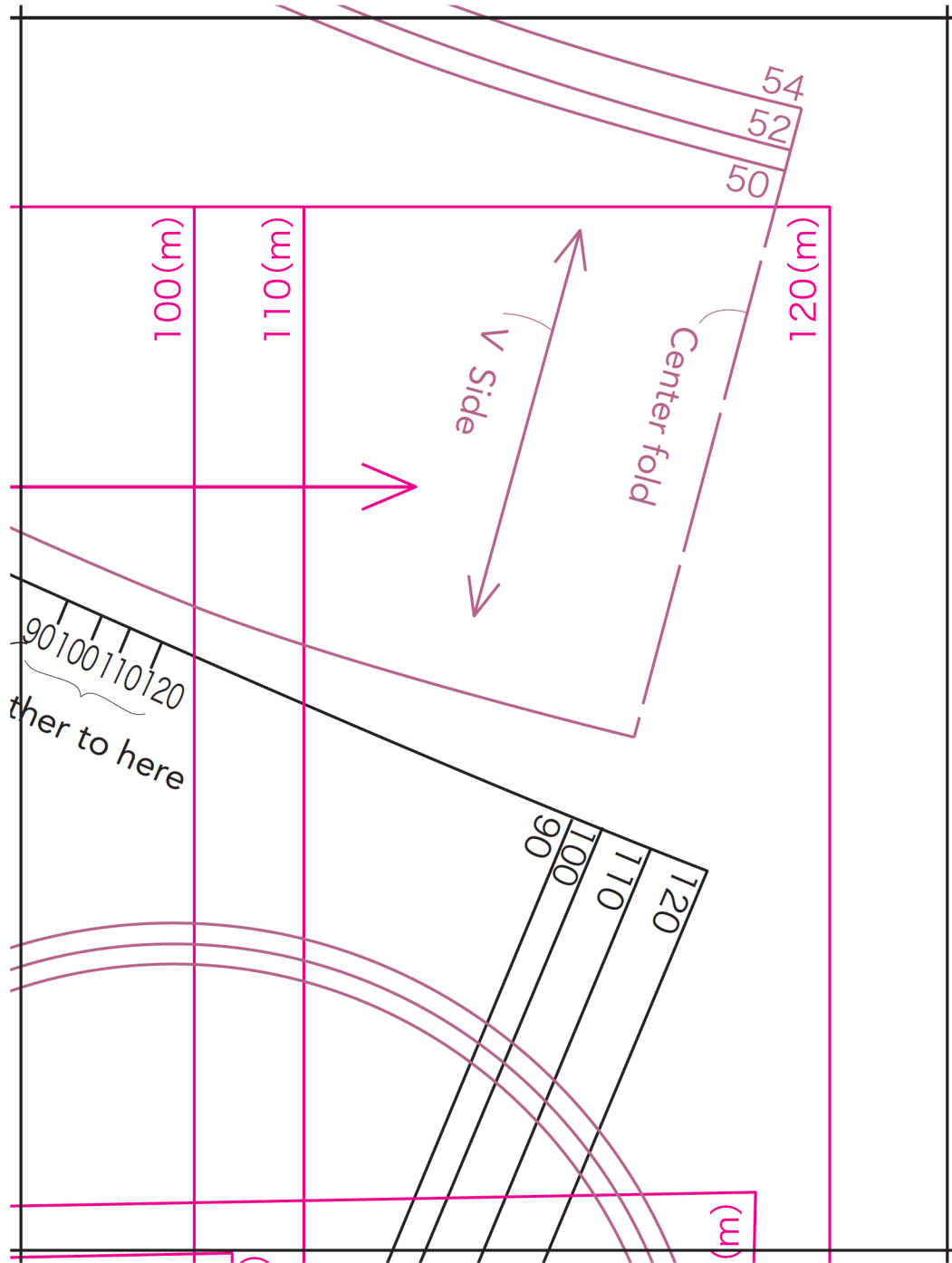




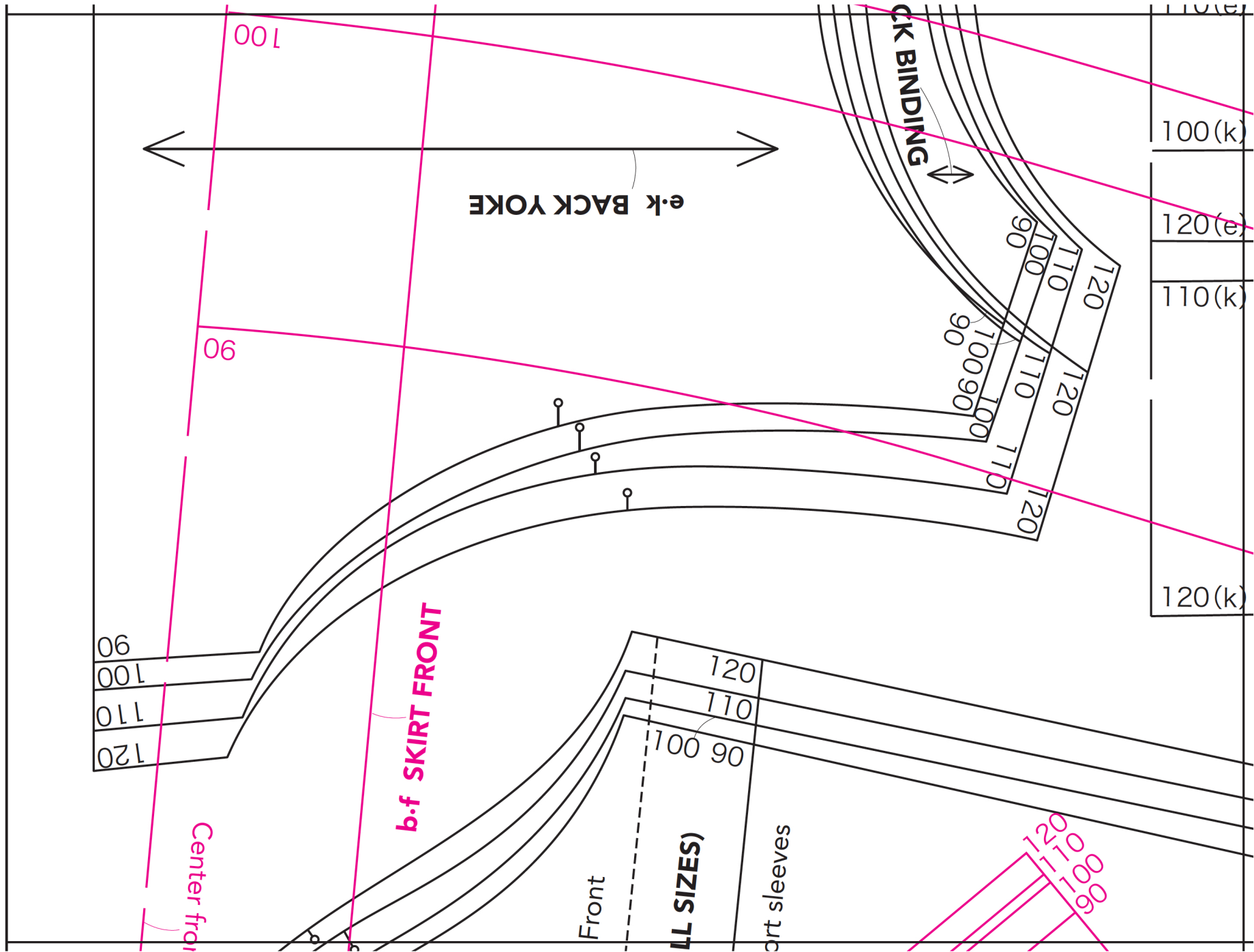
**B4**



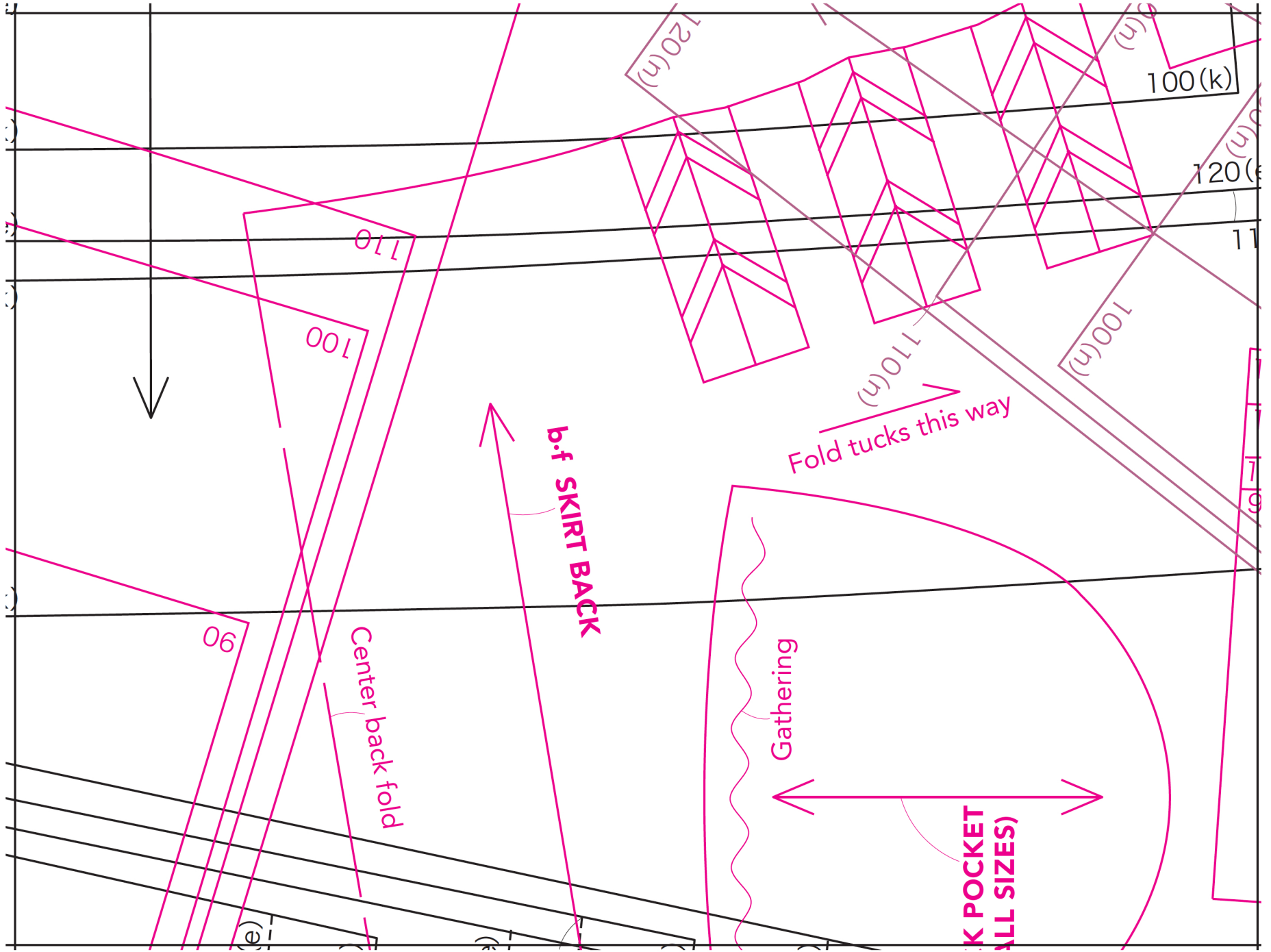
B5



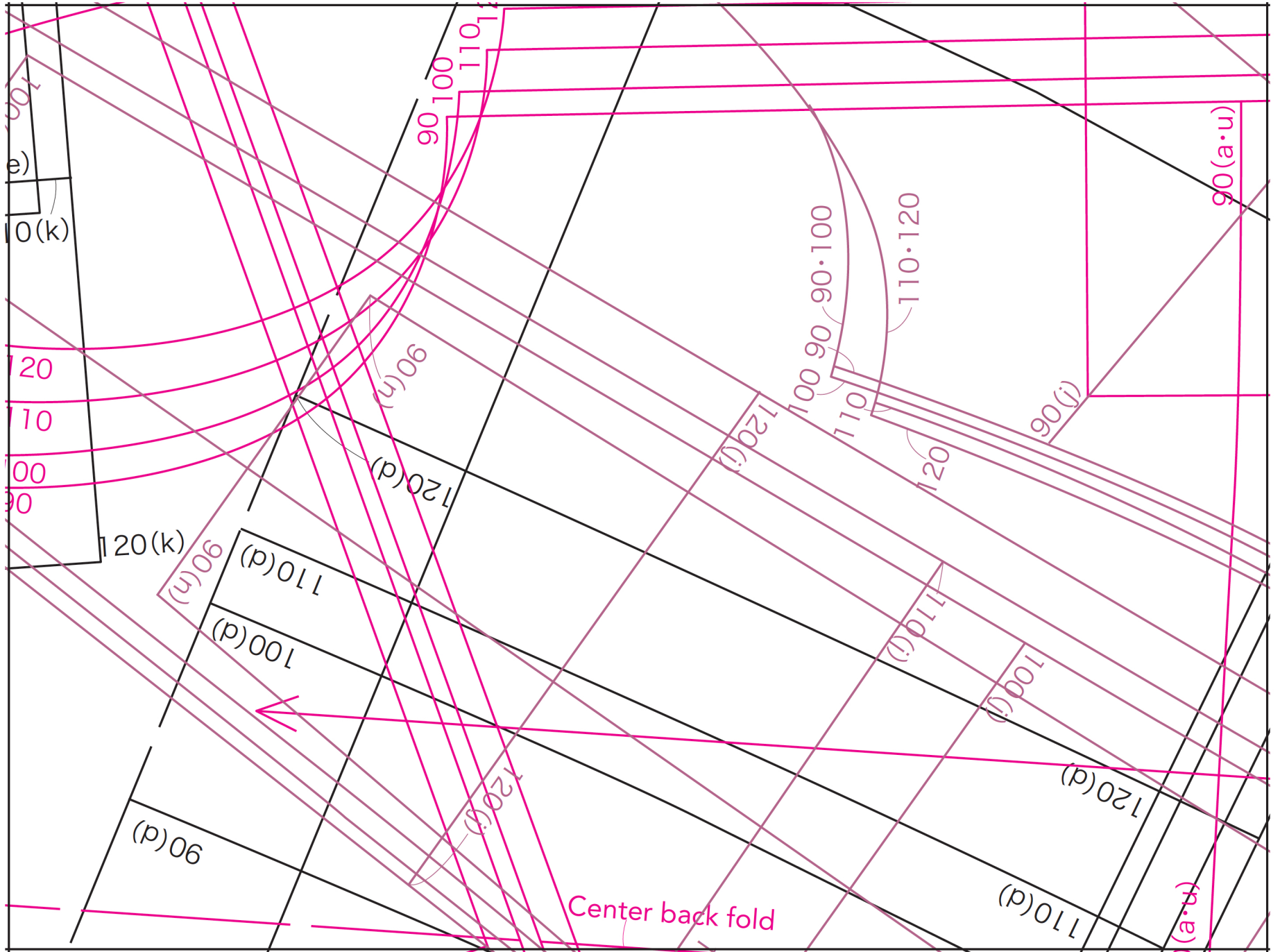
# C1



C2

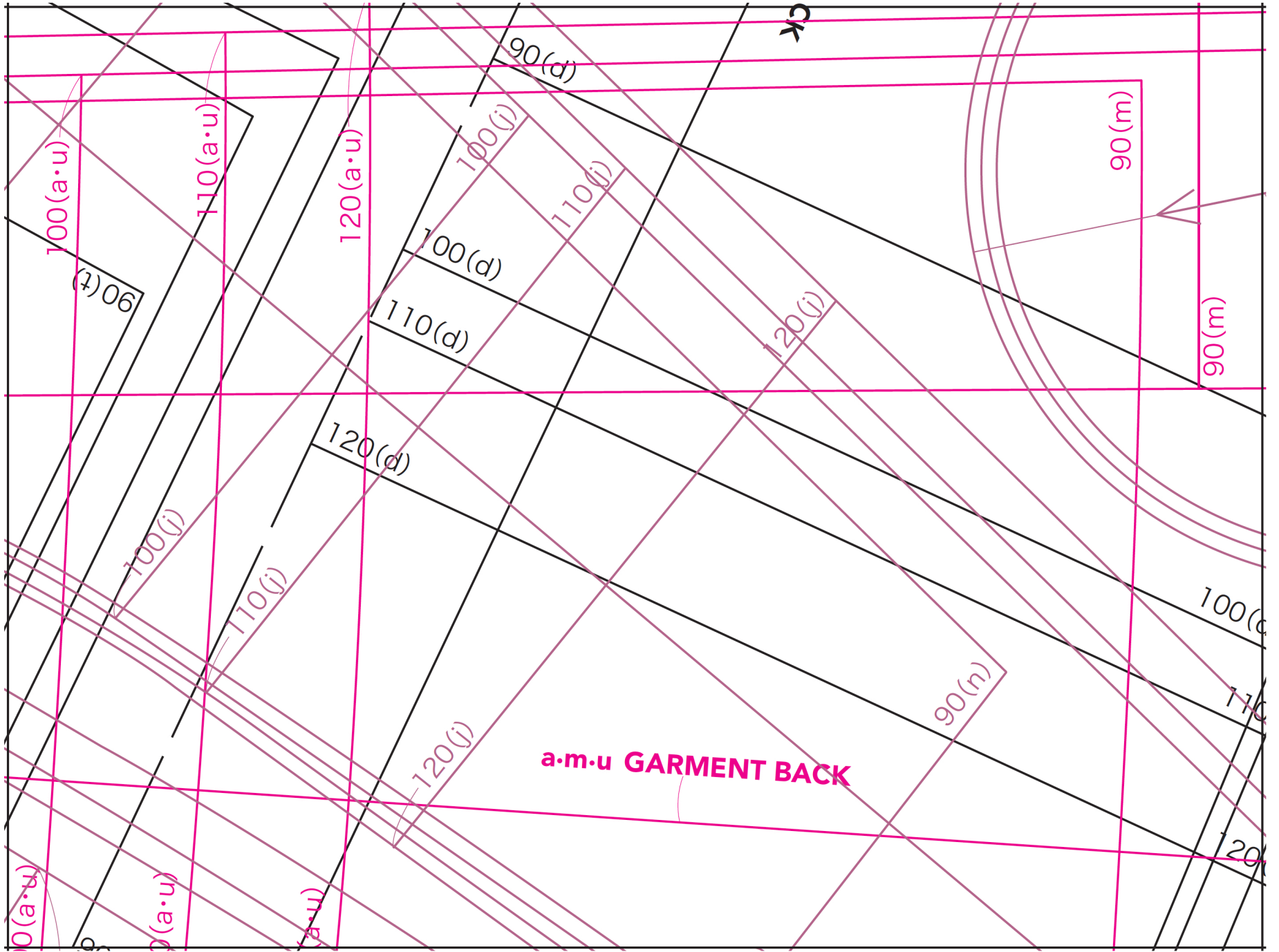


# C3



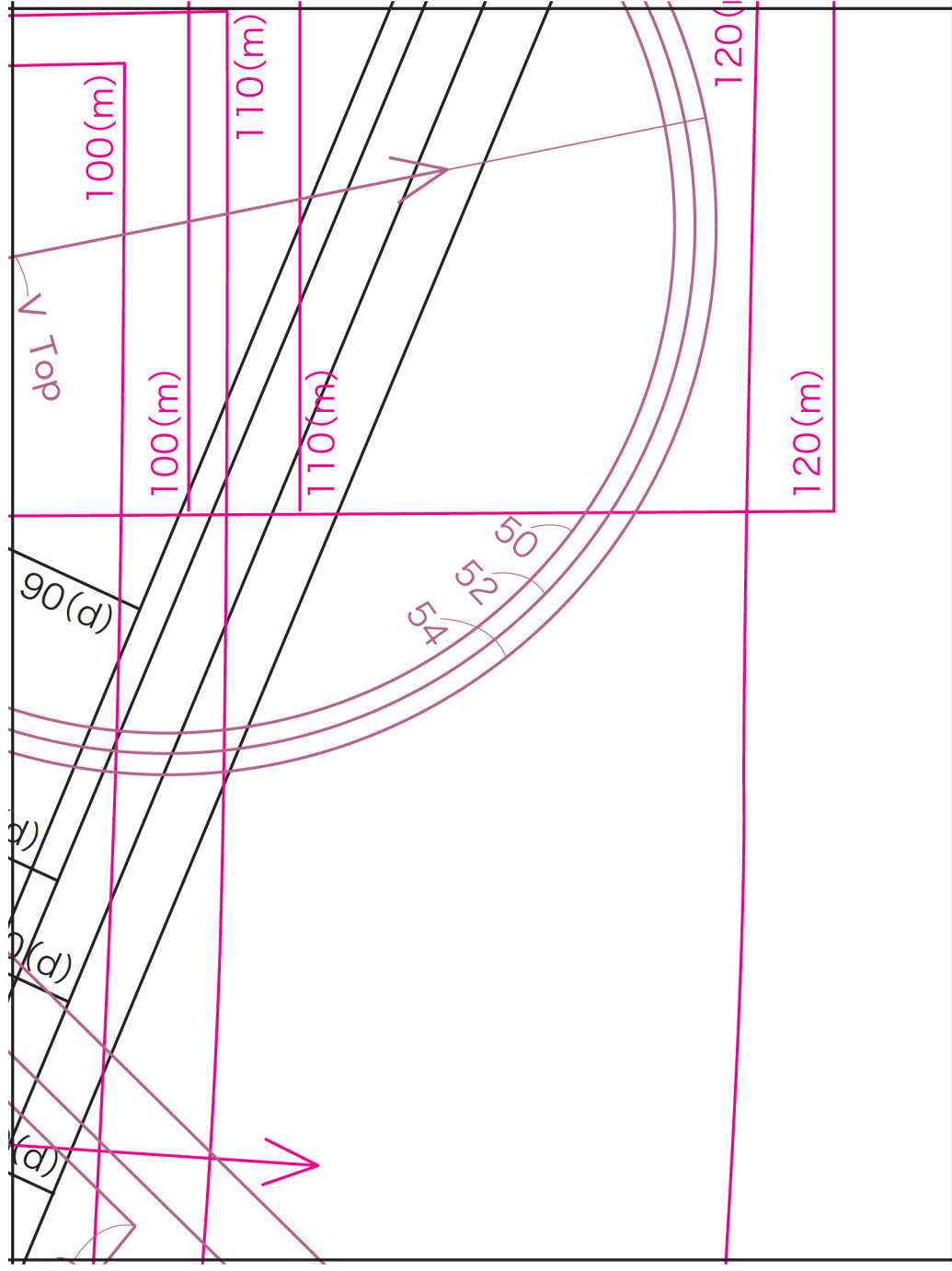


C4

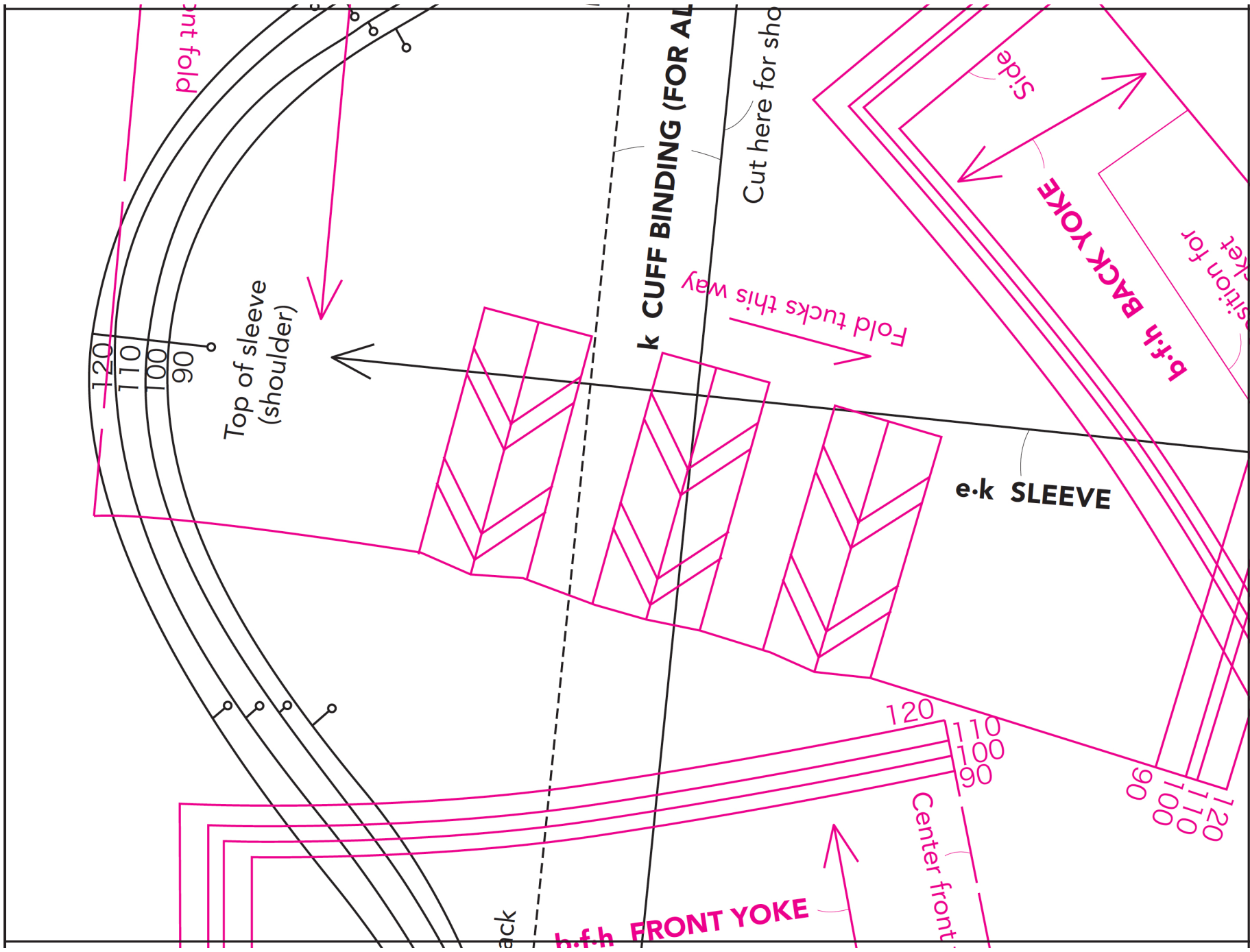




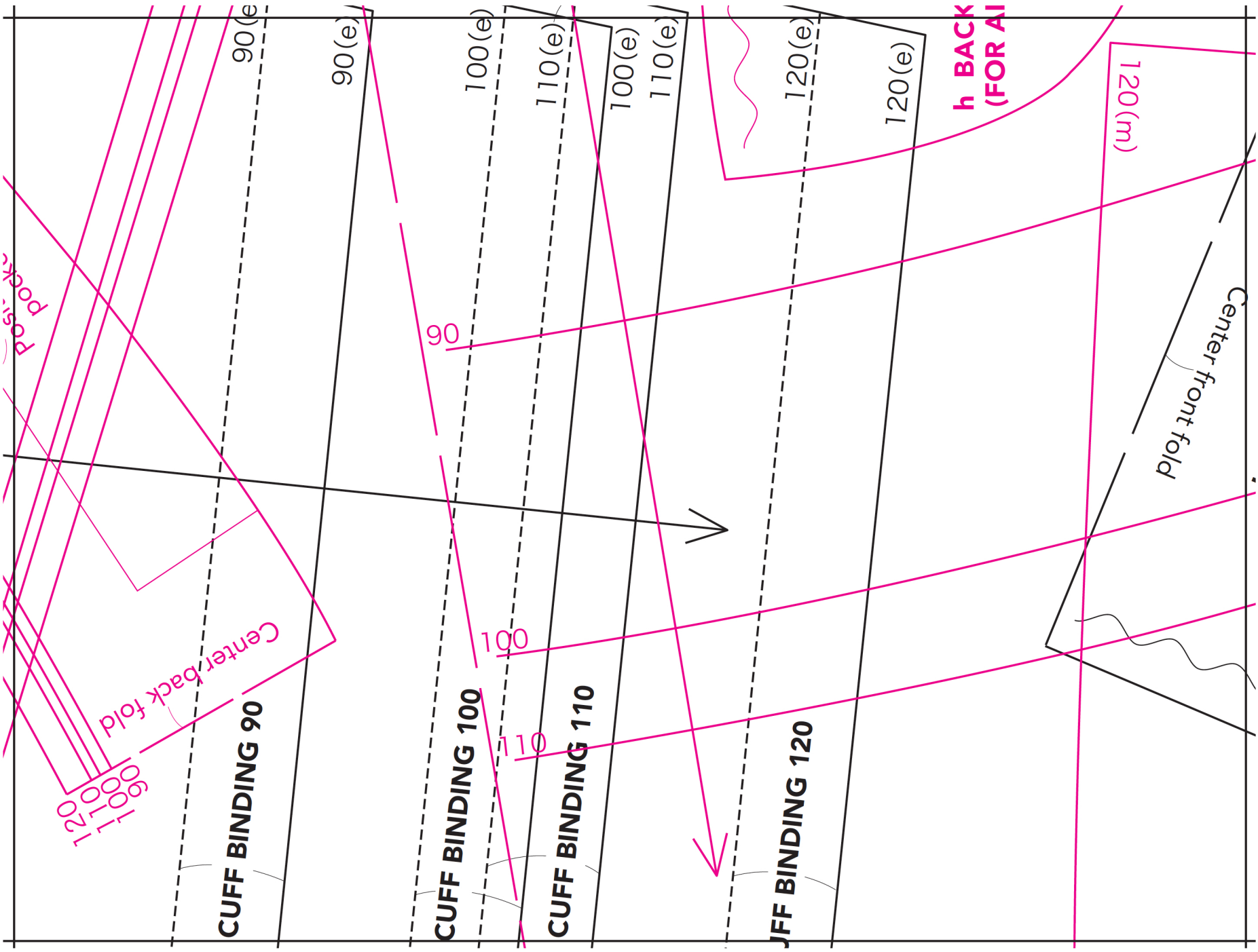
C5



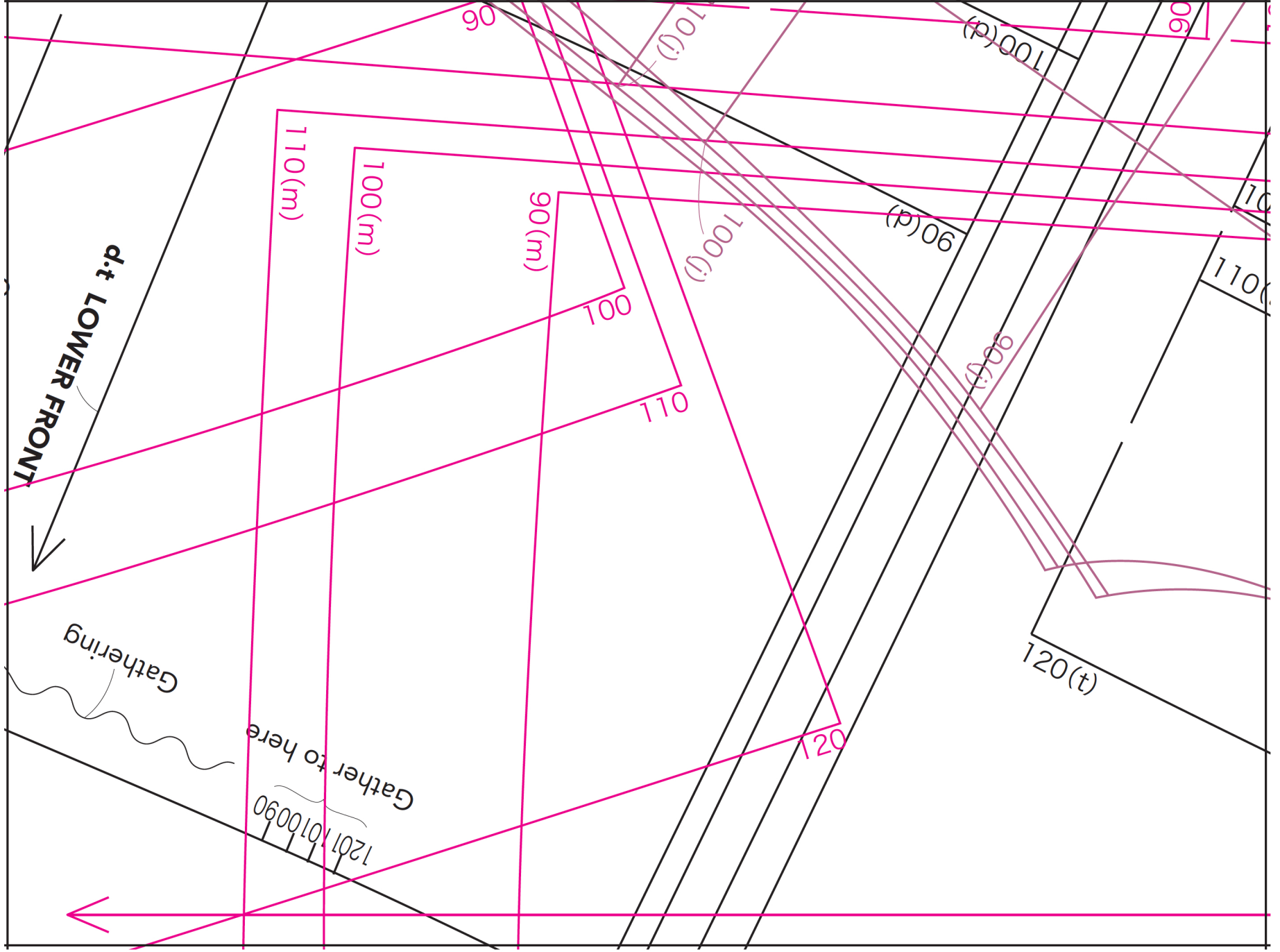
D1



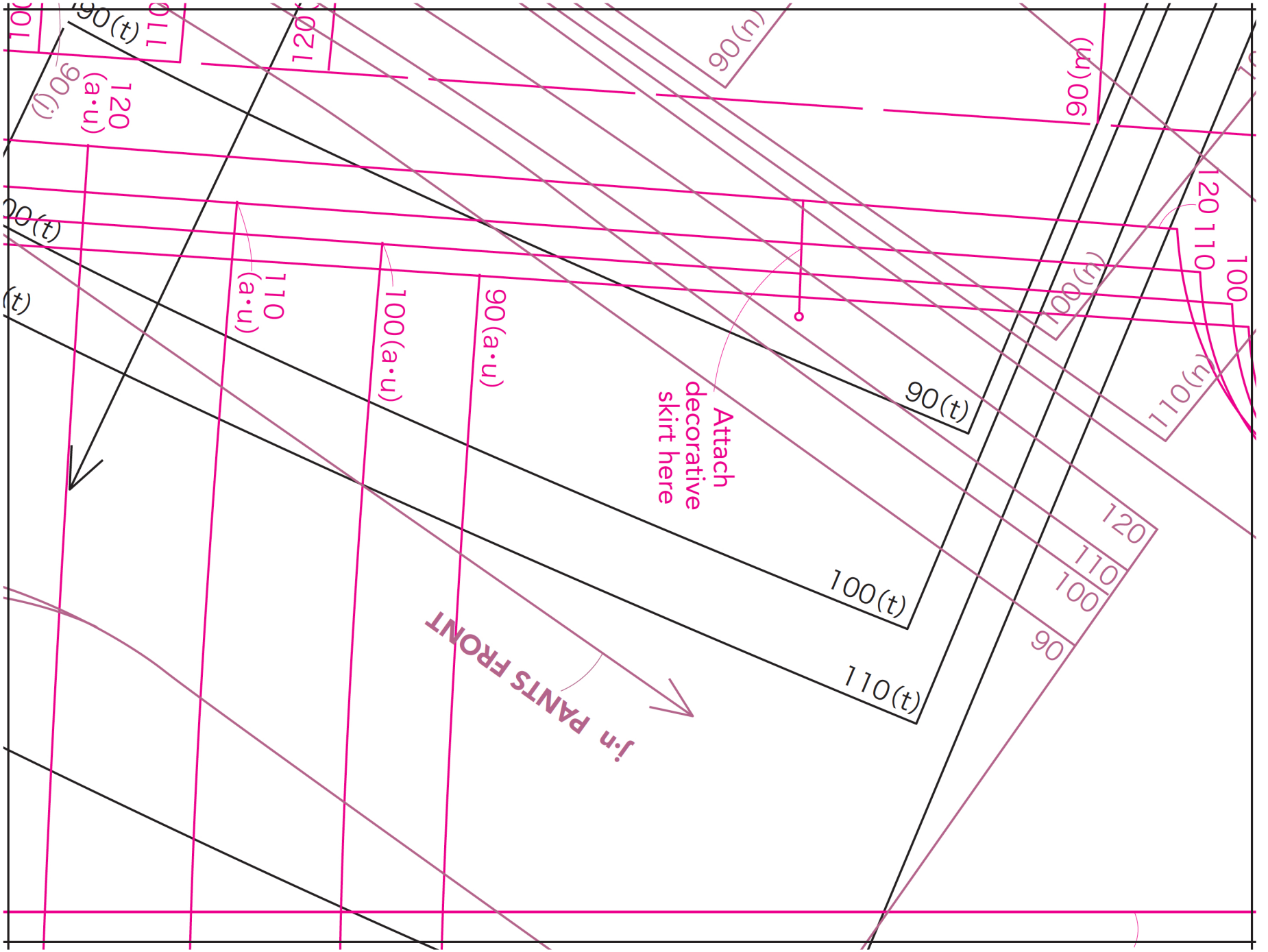
D2



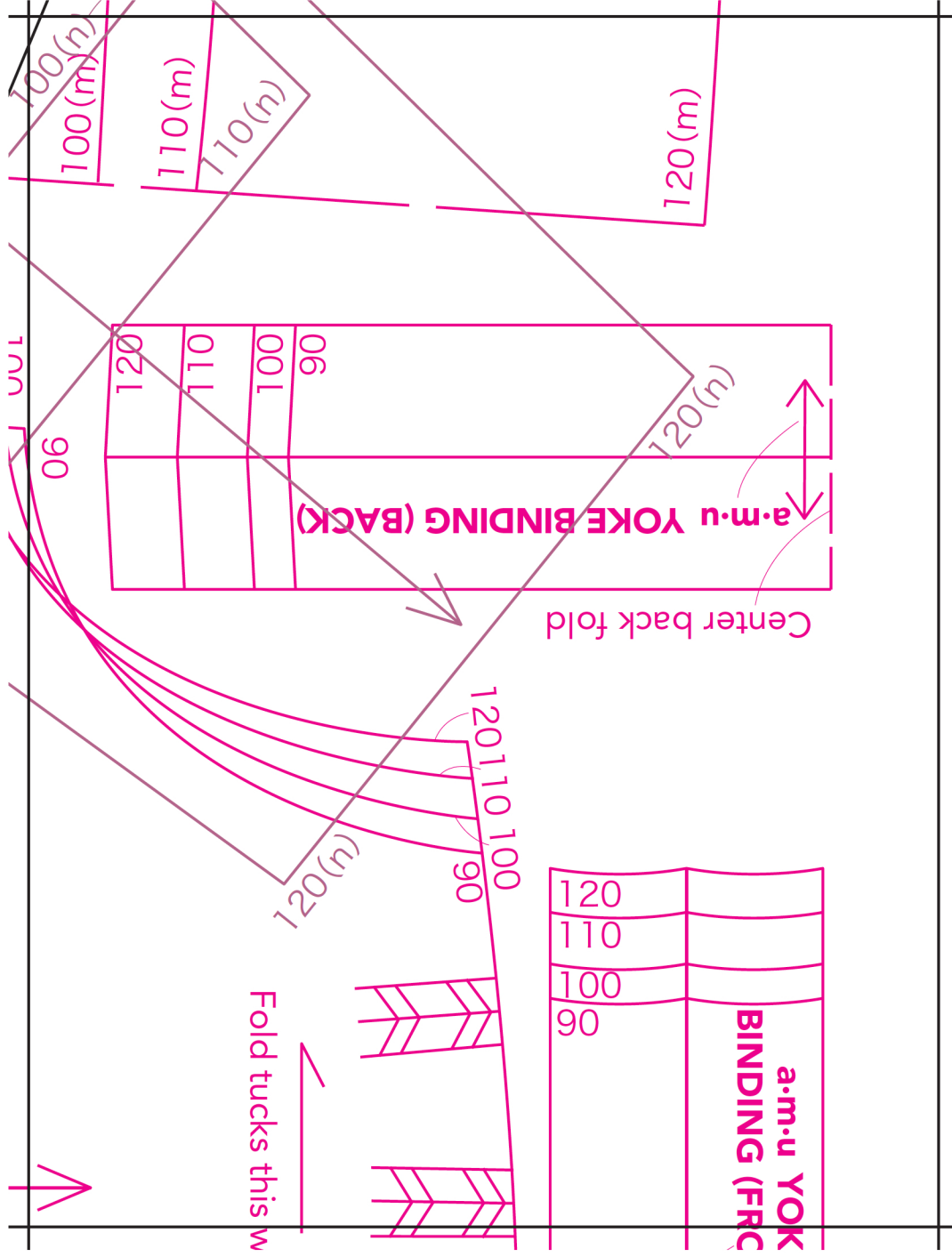
# D3



# D4

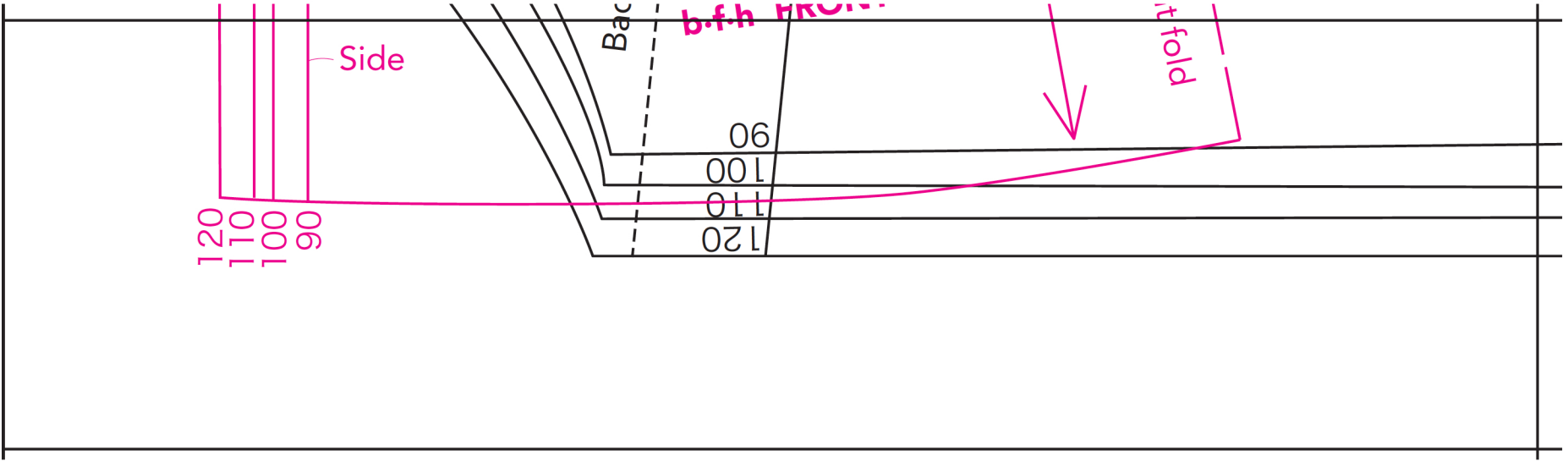


D5

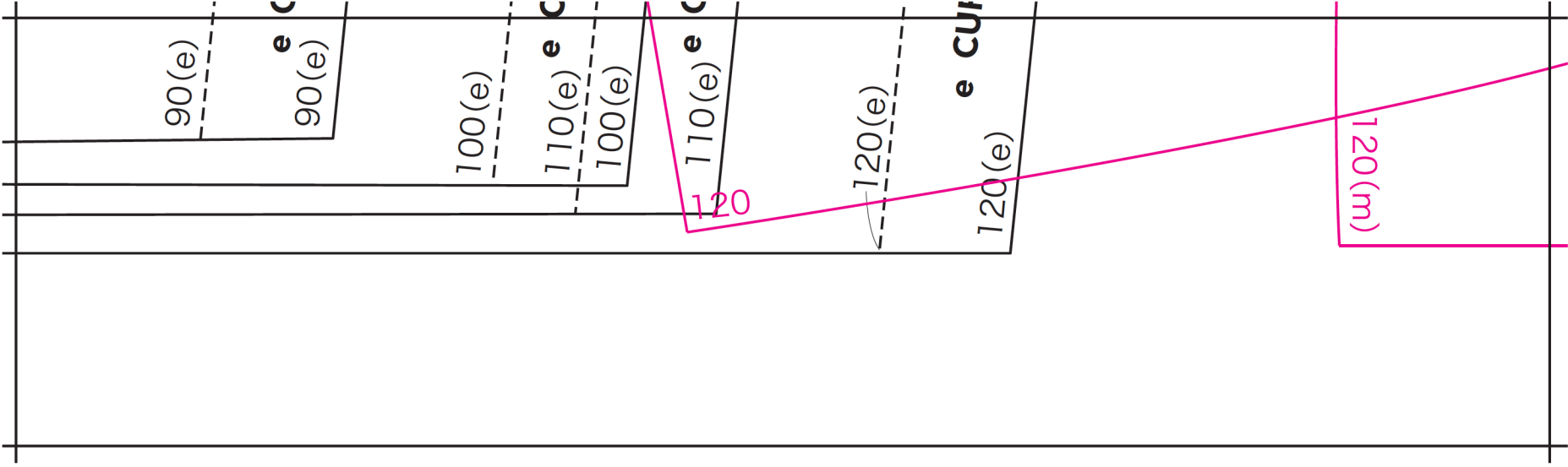




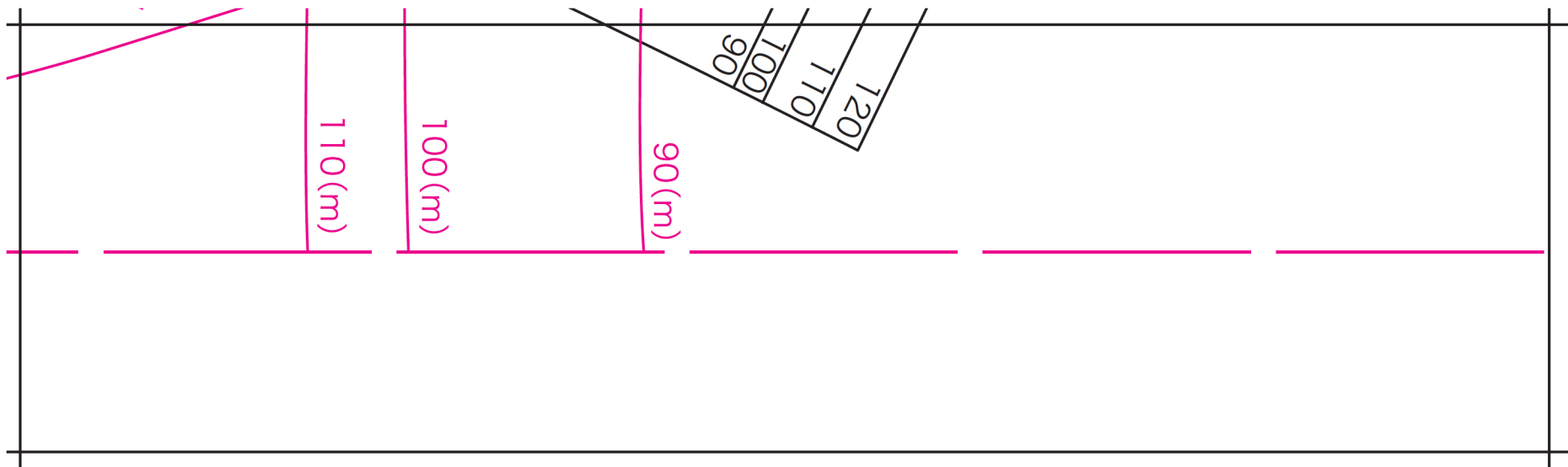
E1



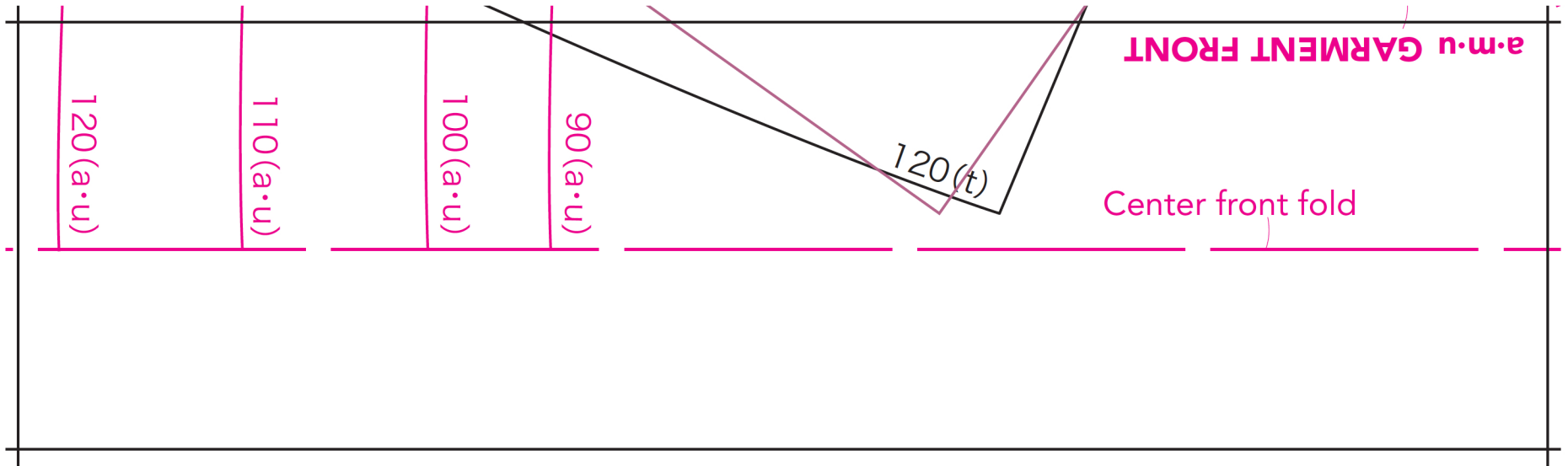
# E2



E3



E4



E5

