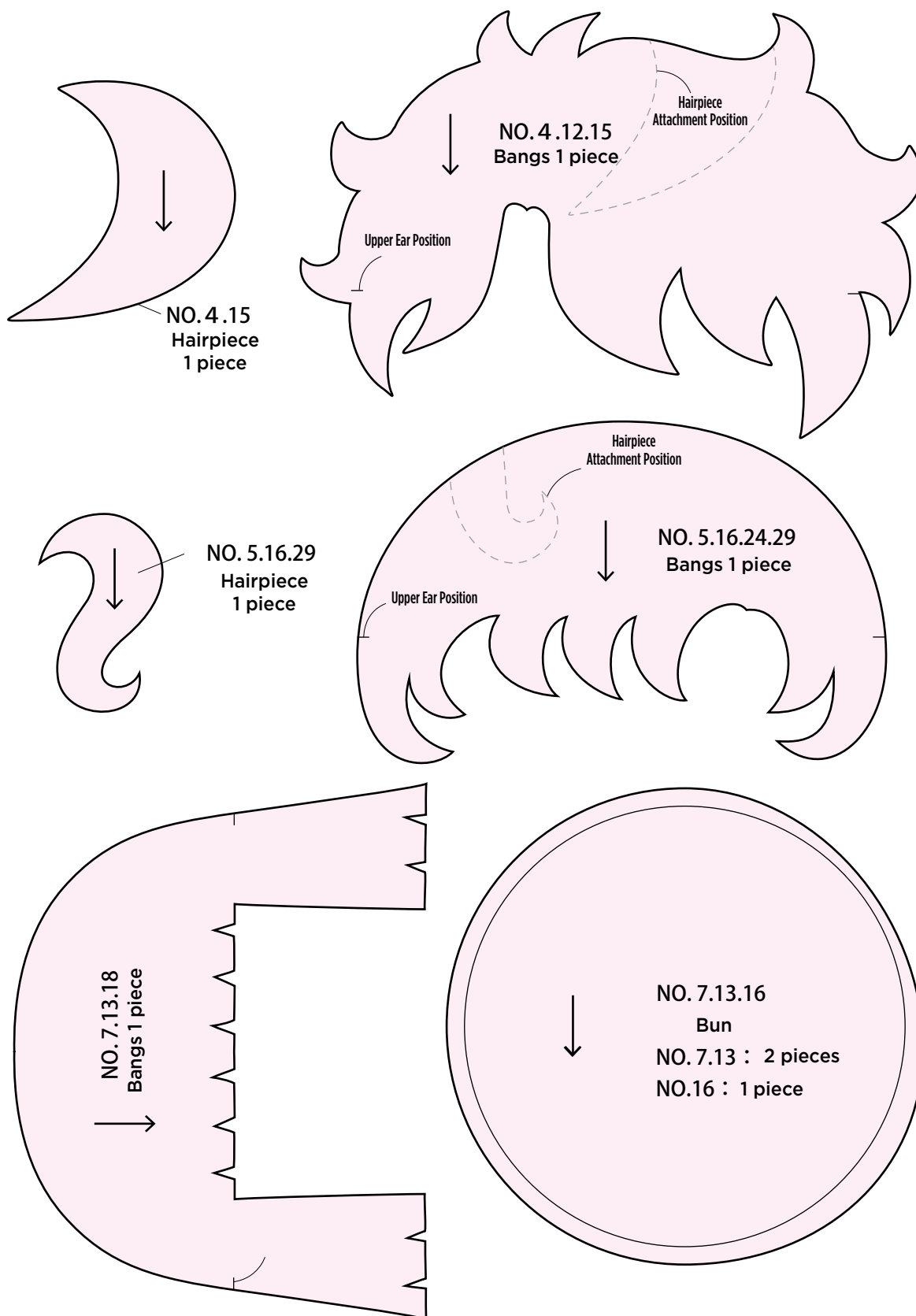
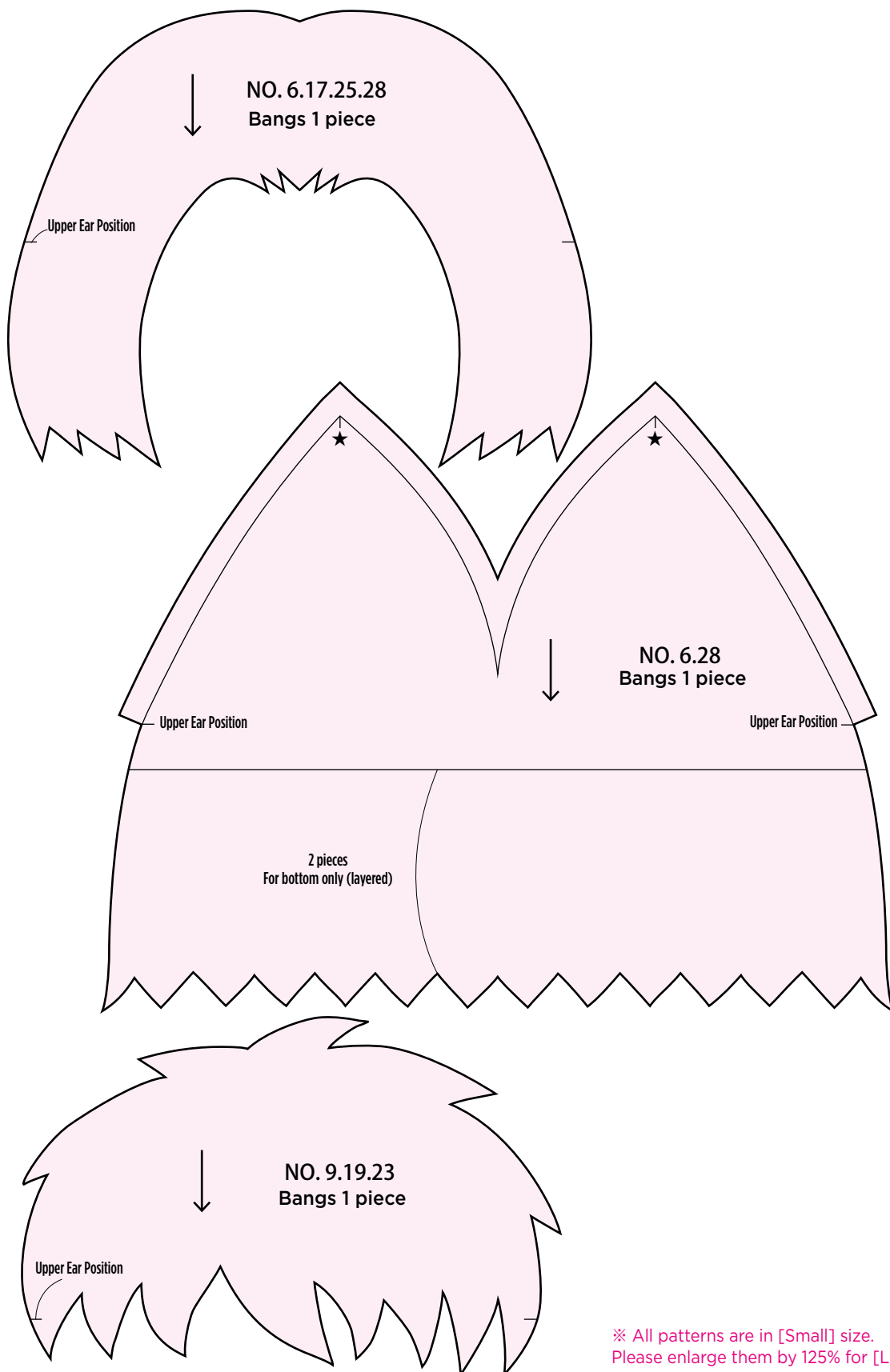
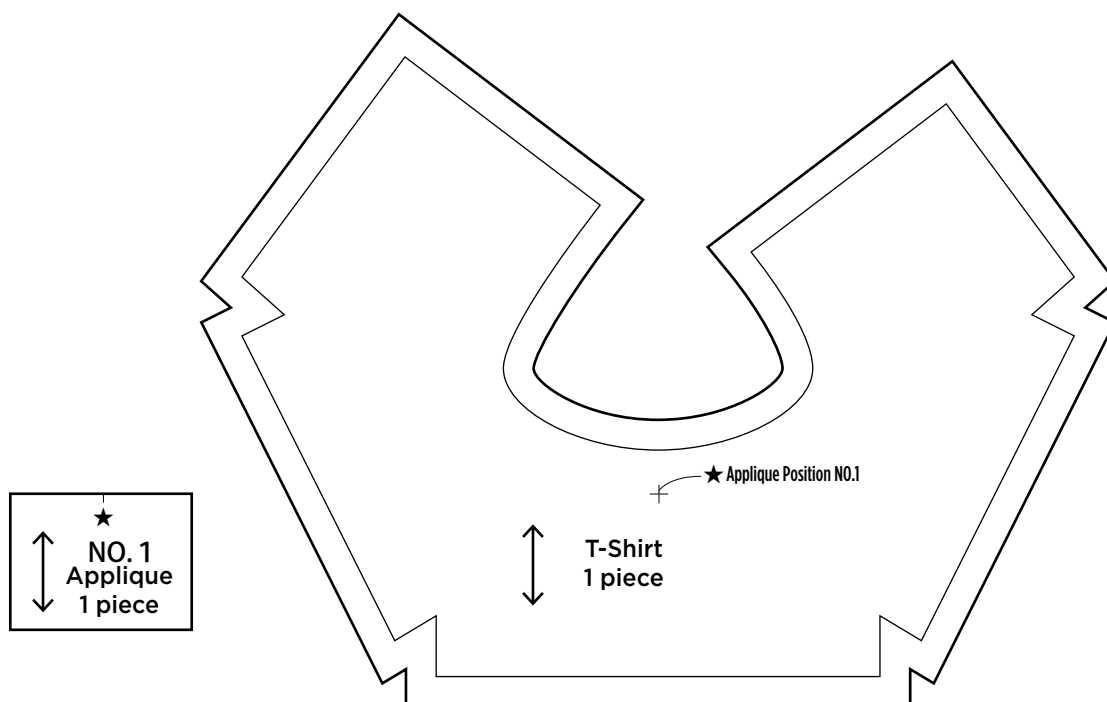
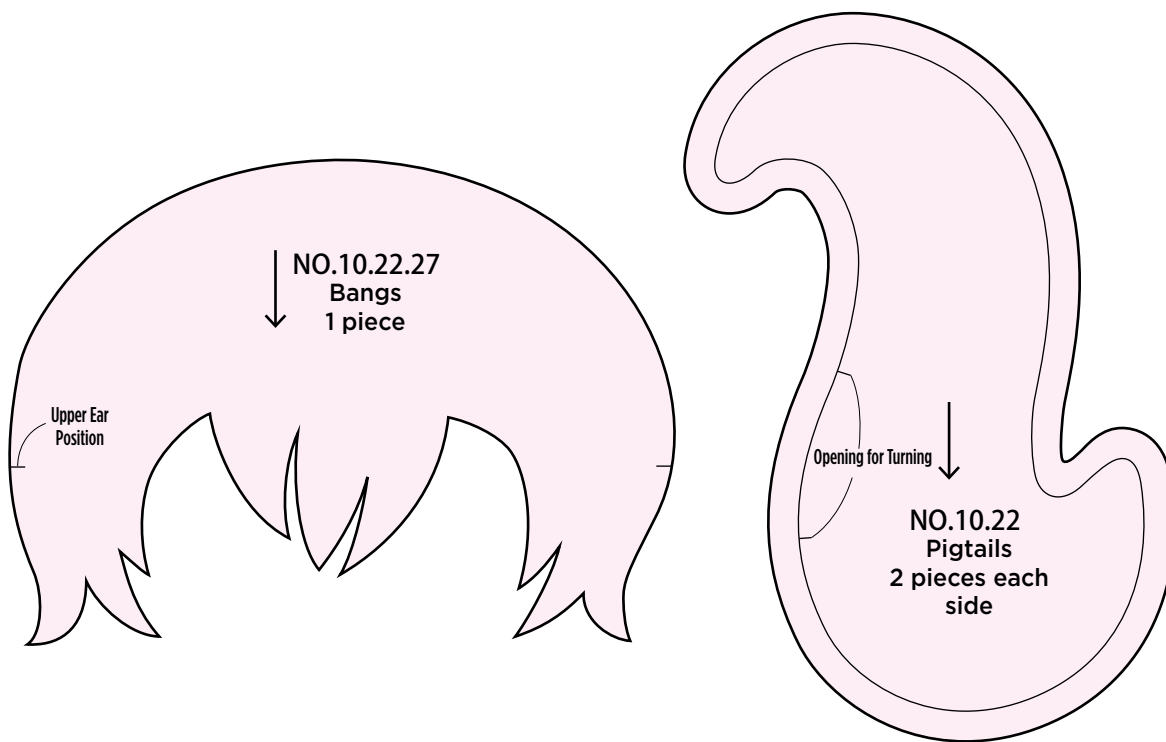


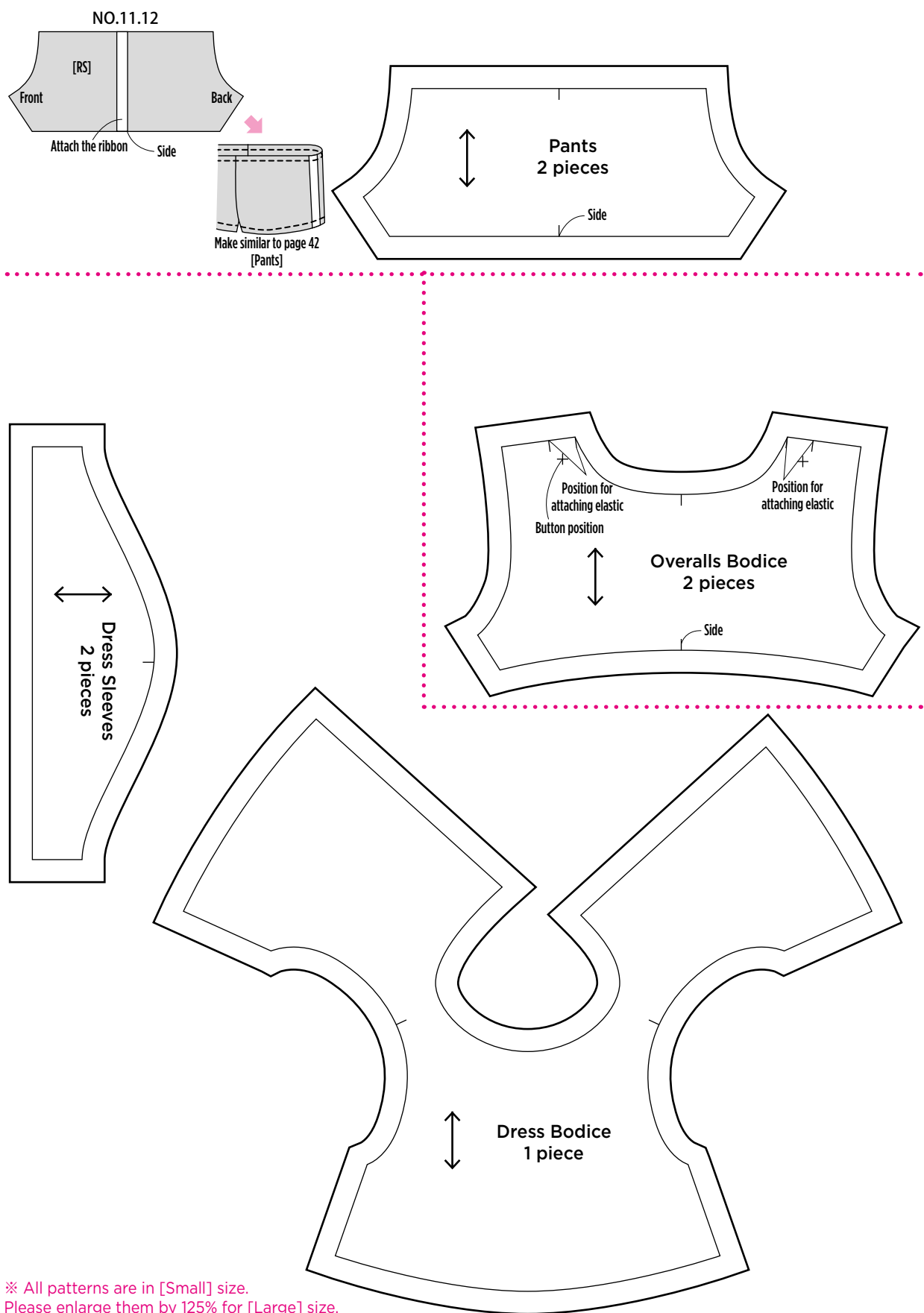
※ All patterns are in [Small] size.
Please enlarge them by 125% for [Large] size.

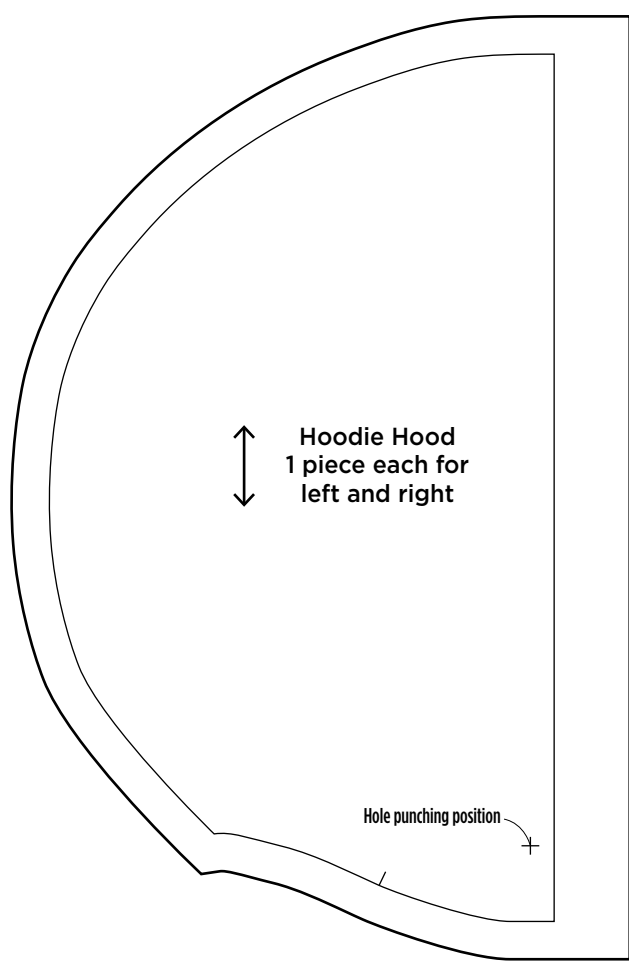
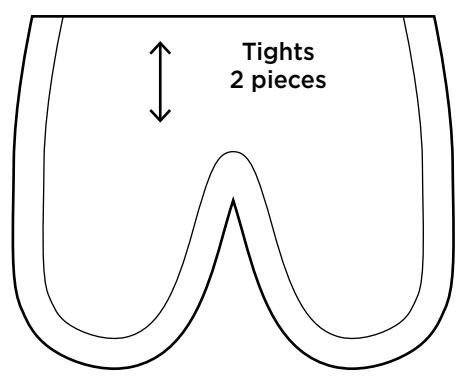
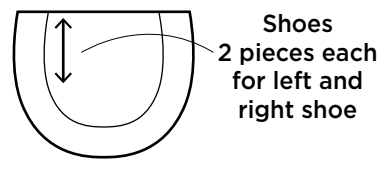
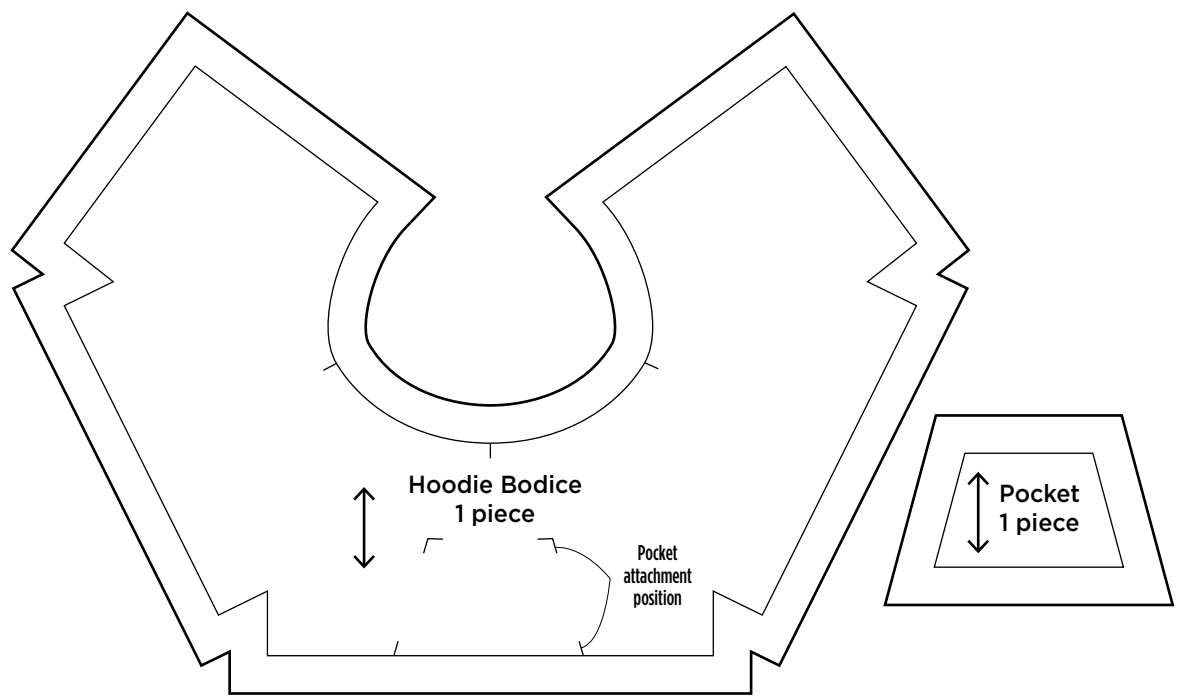


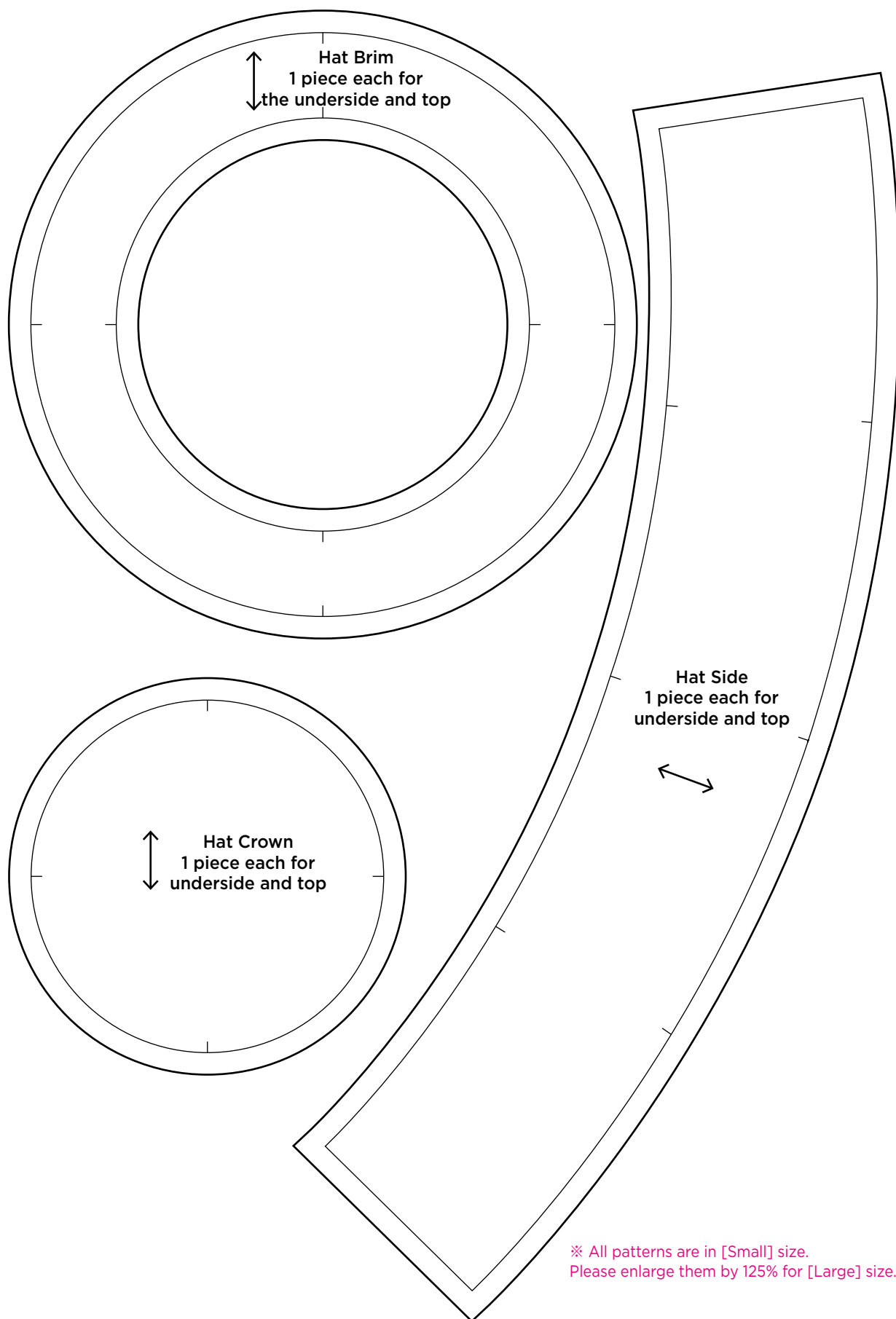


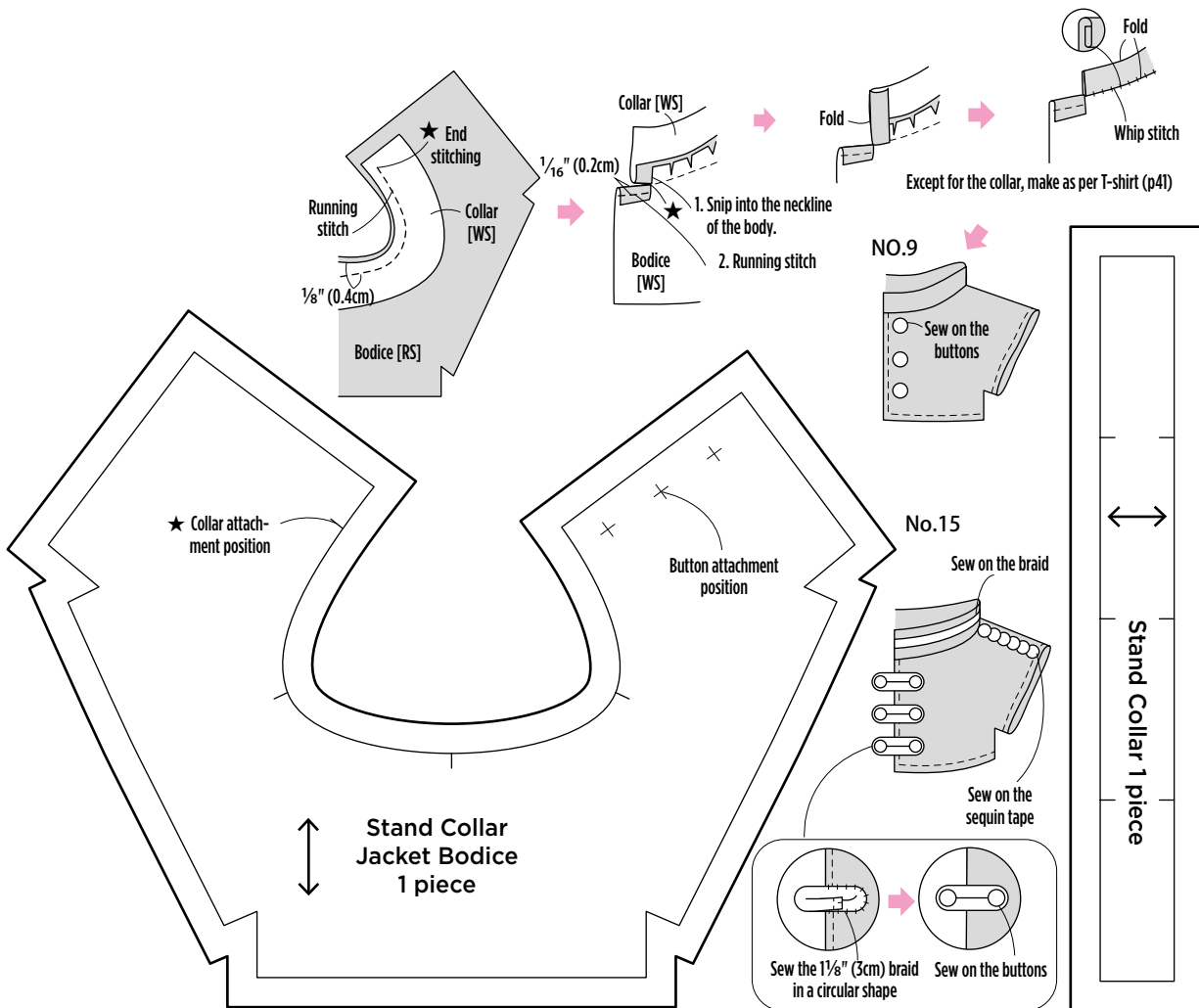
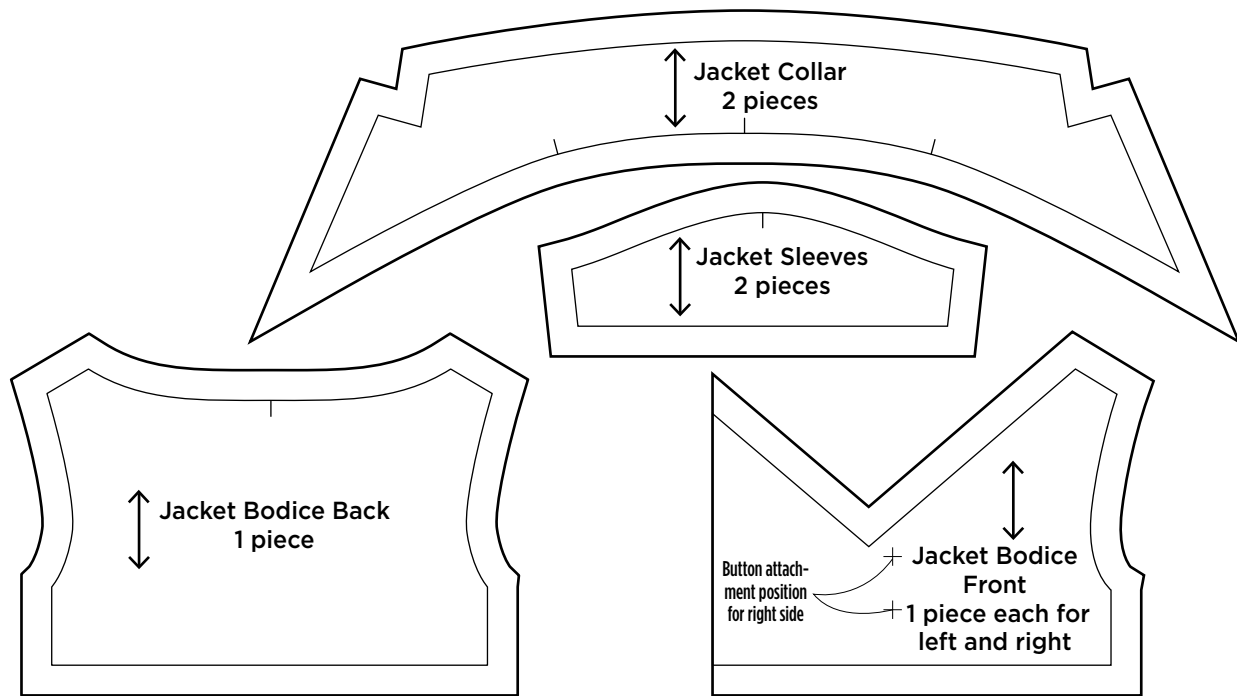
※ All patterns are in [Small] size.
Please enlarge them by 125% for [Large] size.

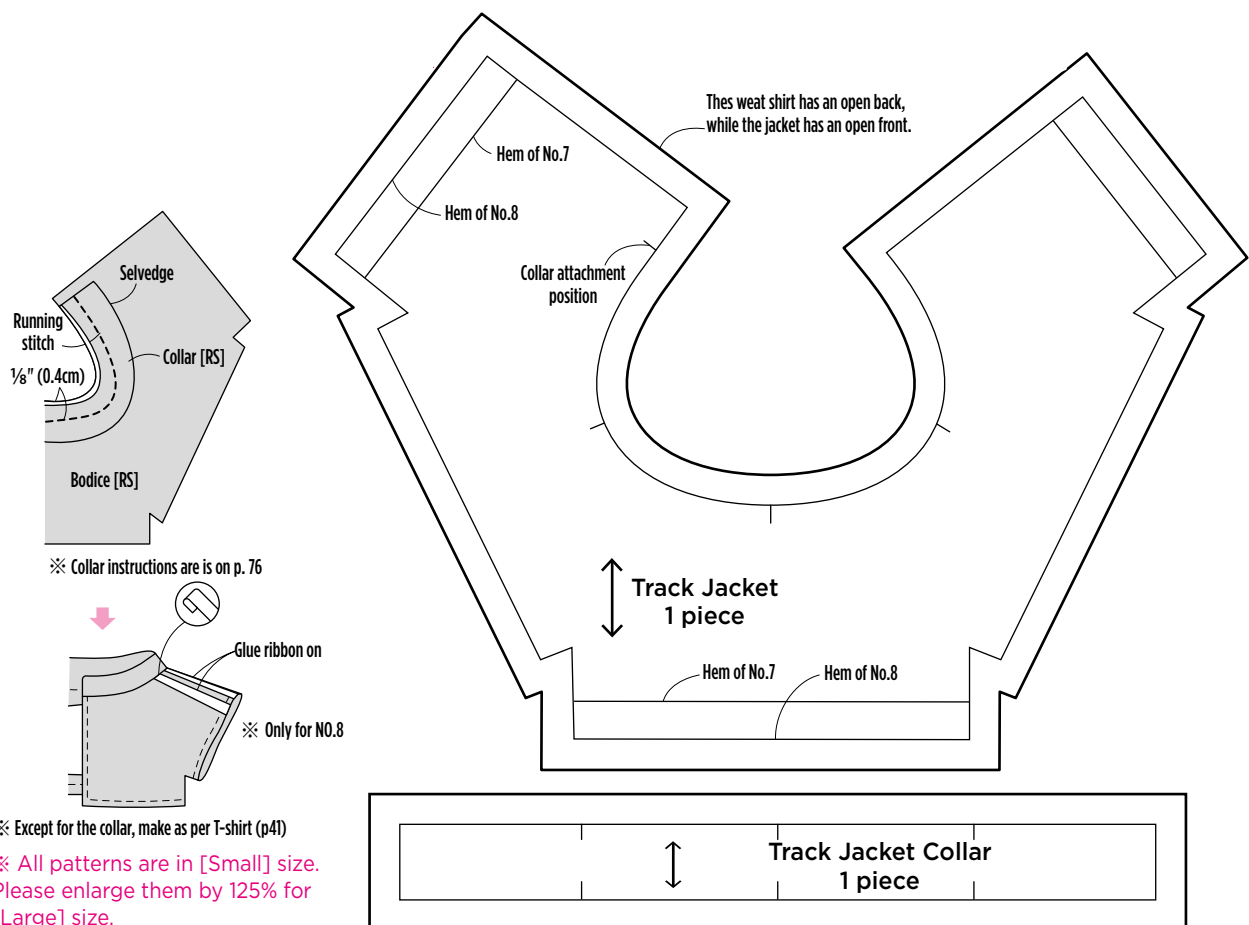
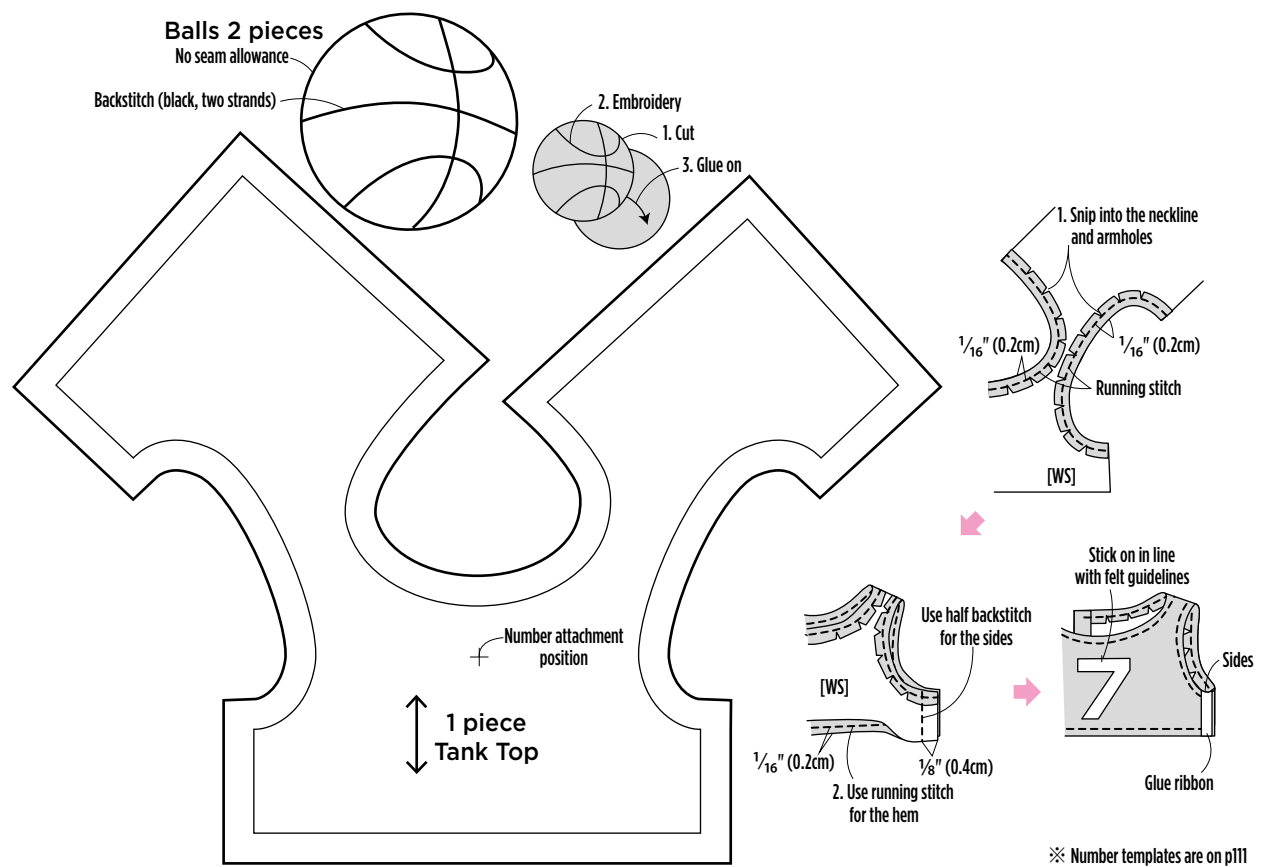


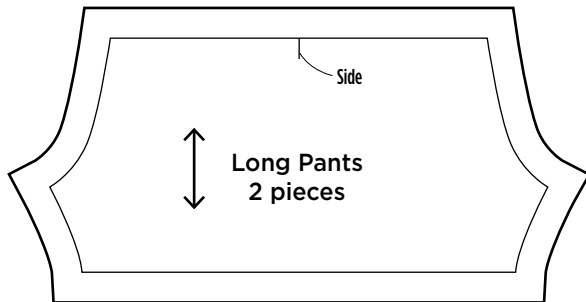




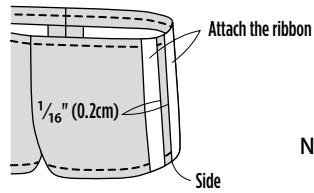






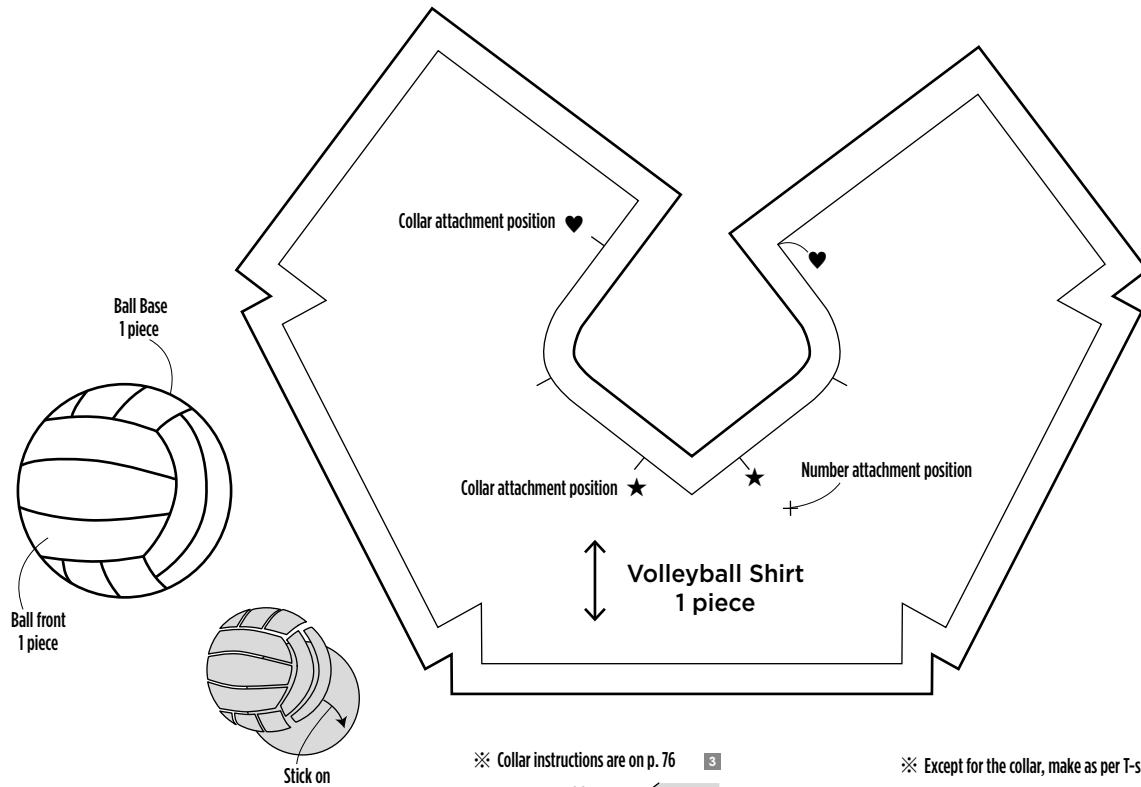
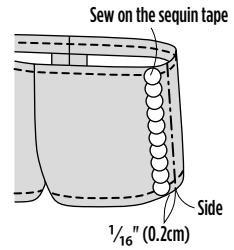


NO.8



※ Long pants are made in the same way as pants (p42)

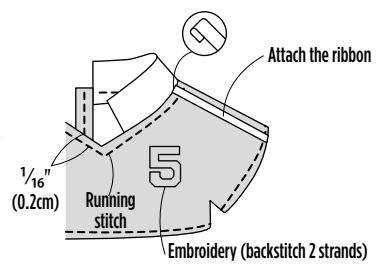
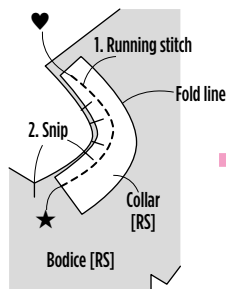
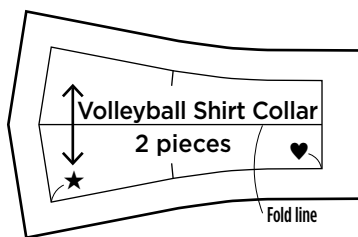
NO.15



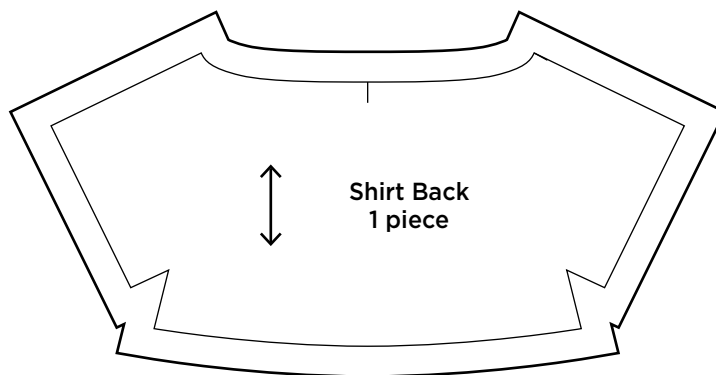
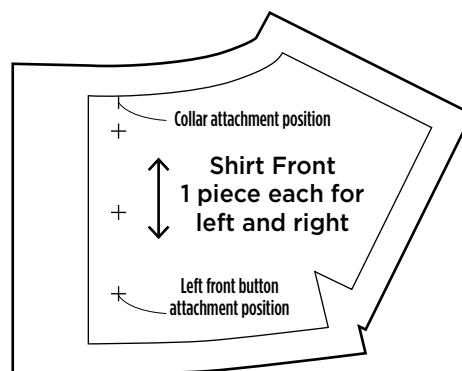
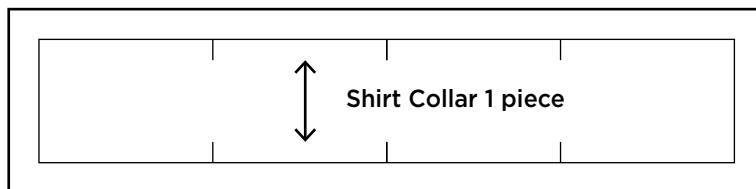
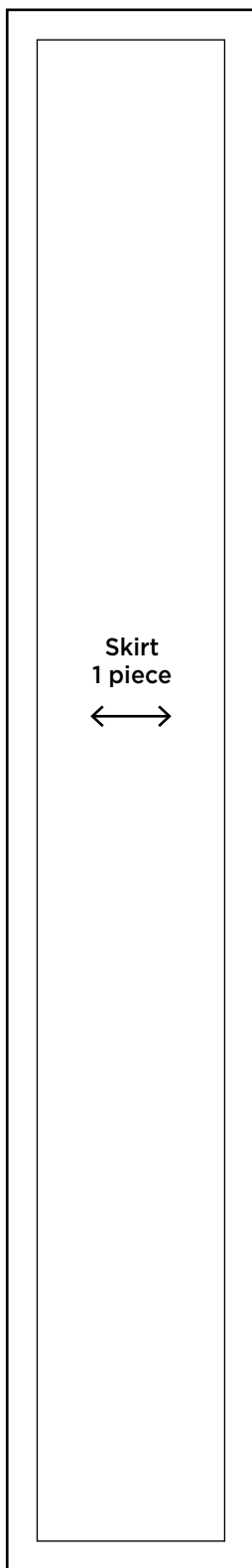
※ Collar instructions are on p. 76

3

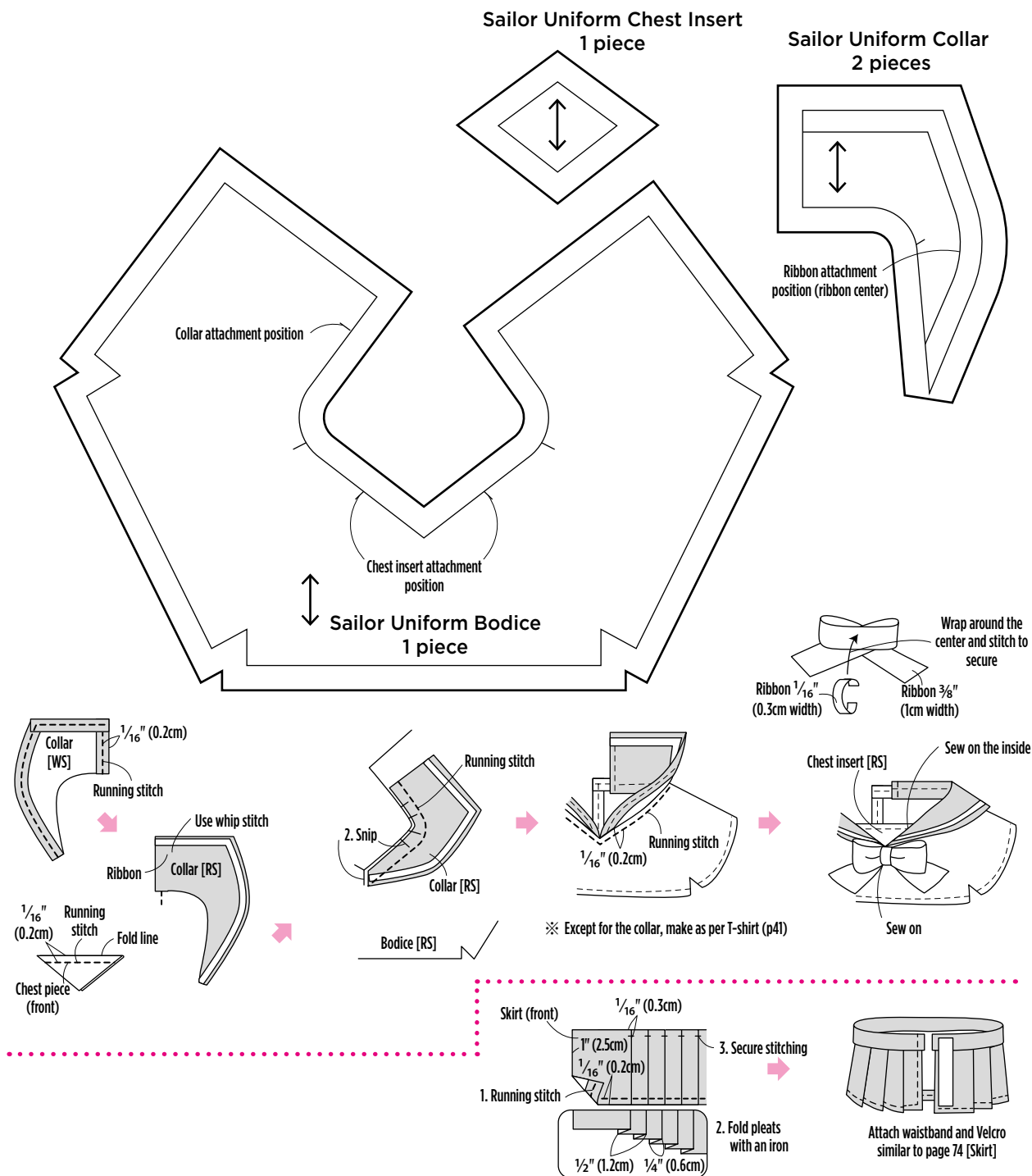
※ Except for the collar, make as per T-shirt (p. 41)



※ Number templates are on p111

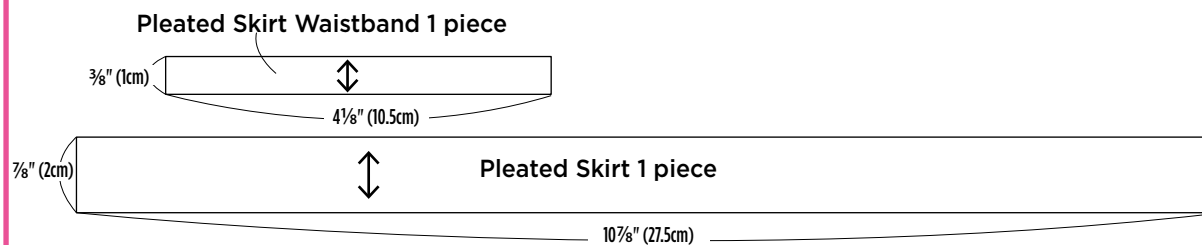


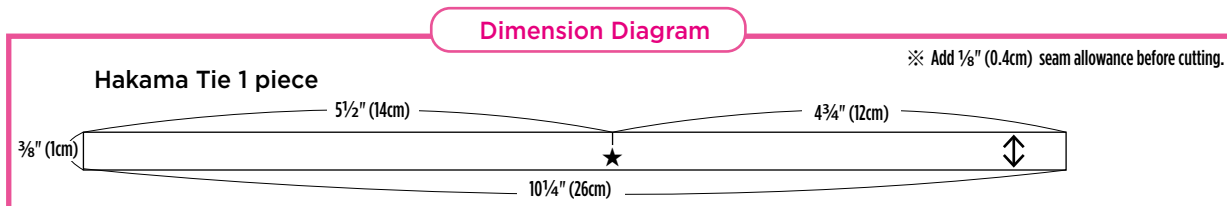
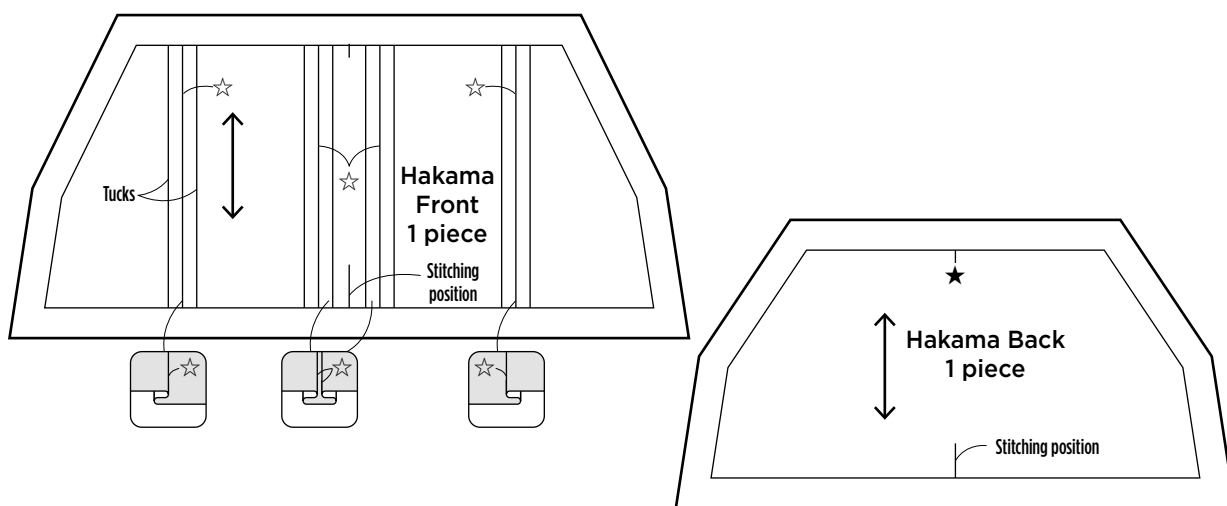
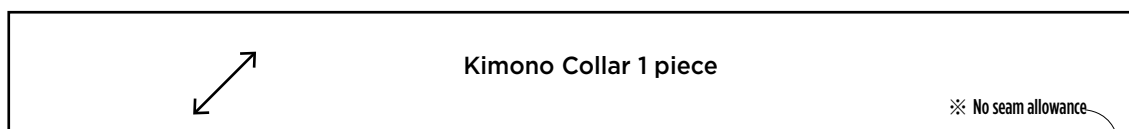
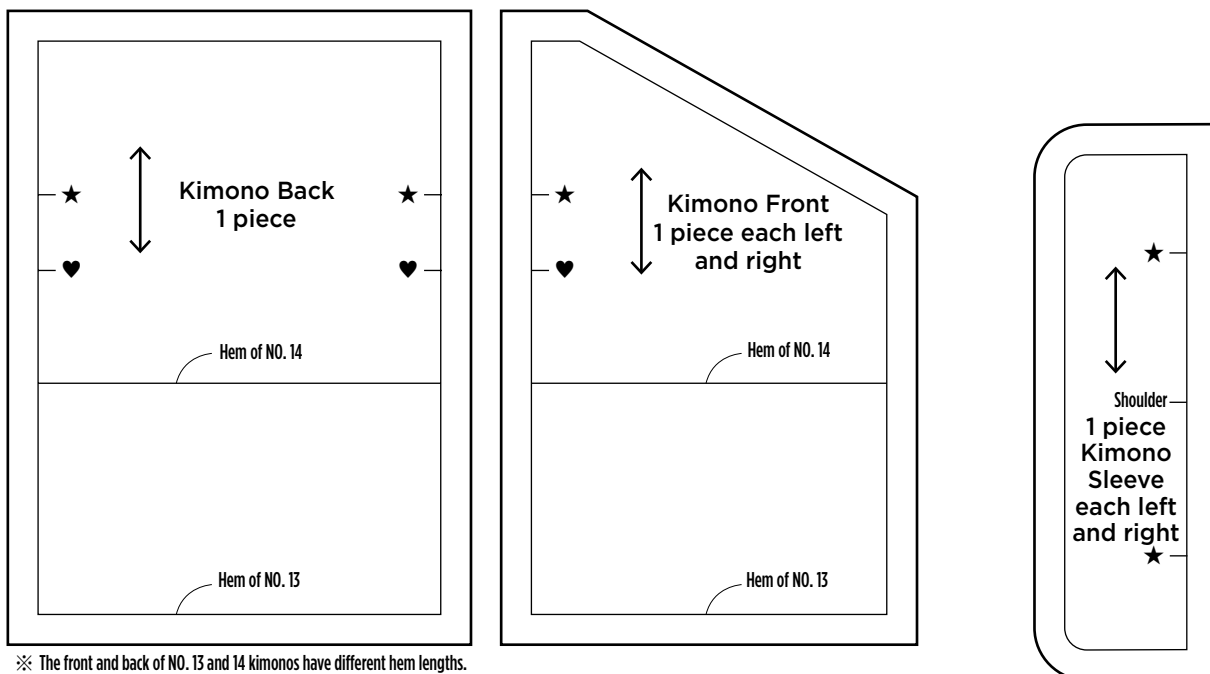
※ All patterns are in [Small] size.
Please enlarge them by 125% for [Large] size.



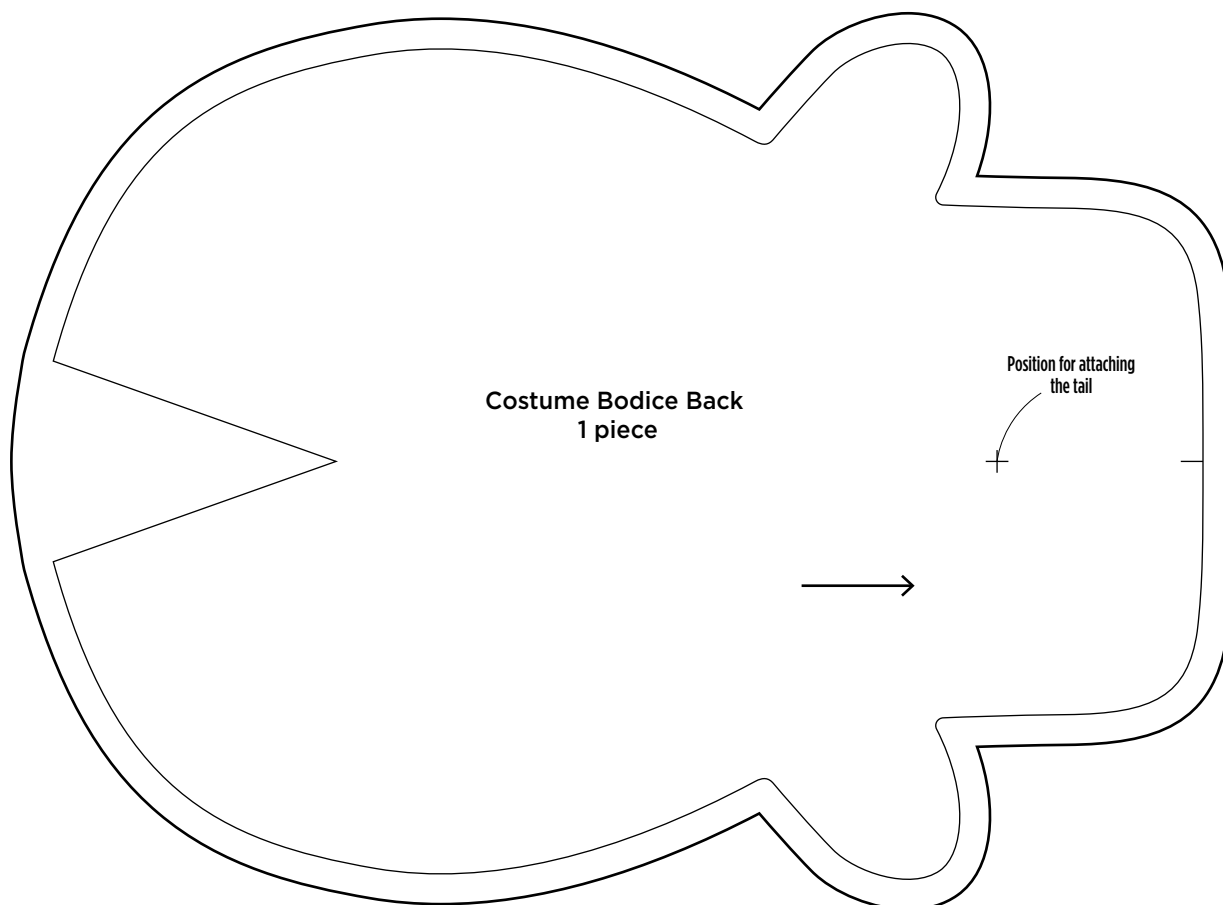
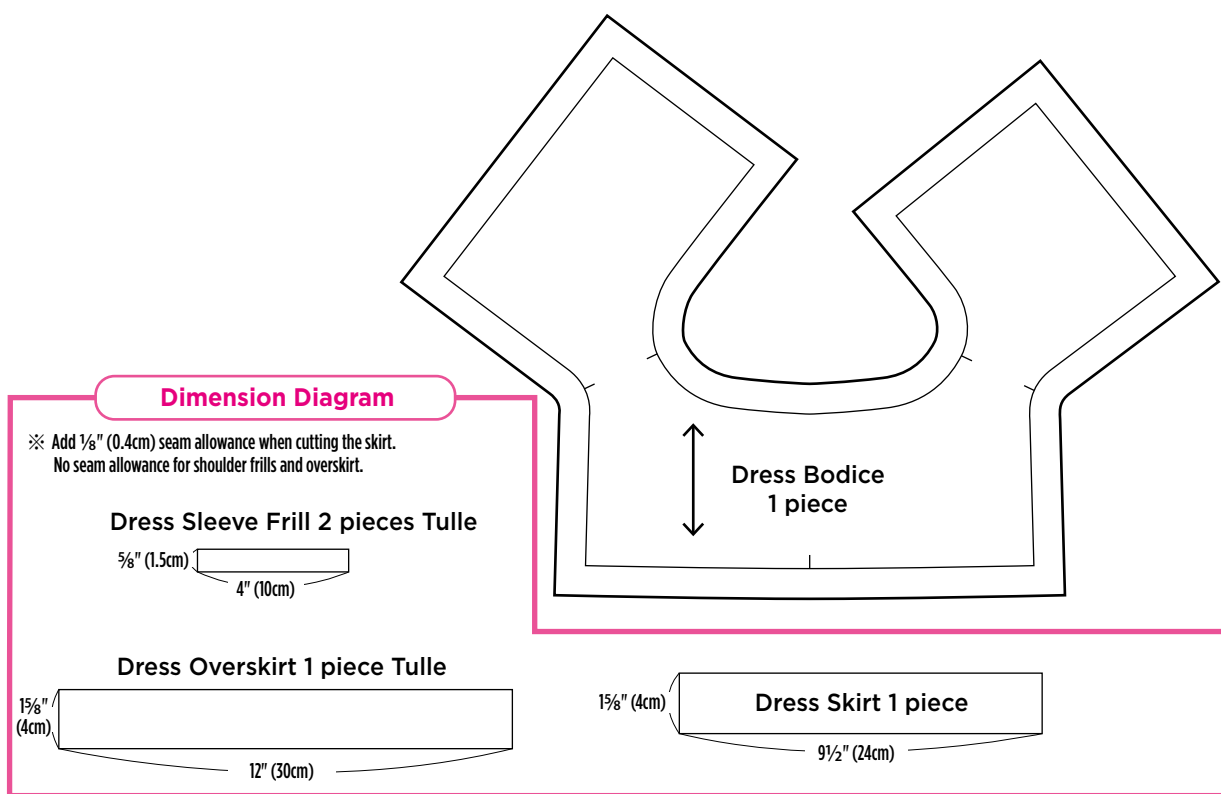
Dimension Diagram

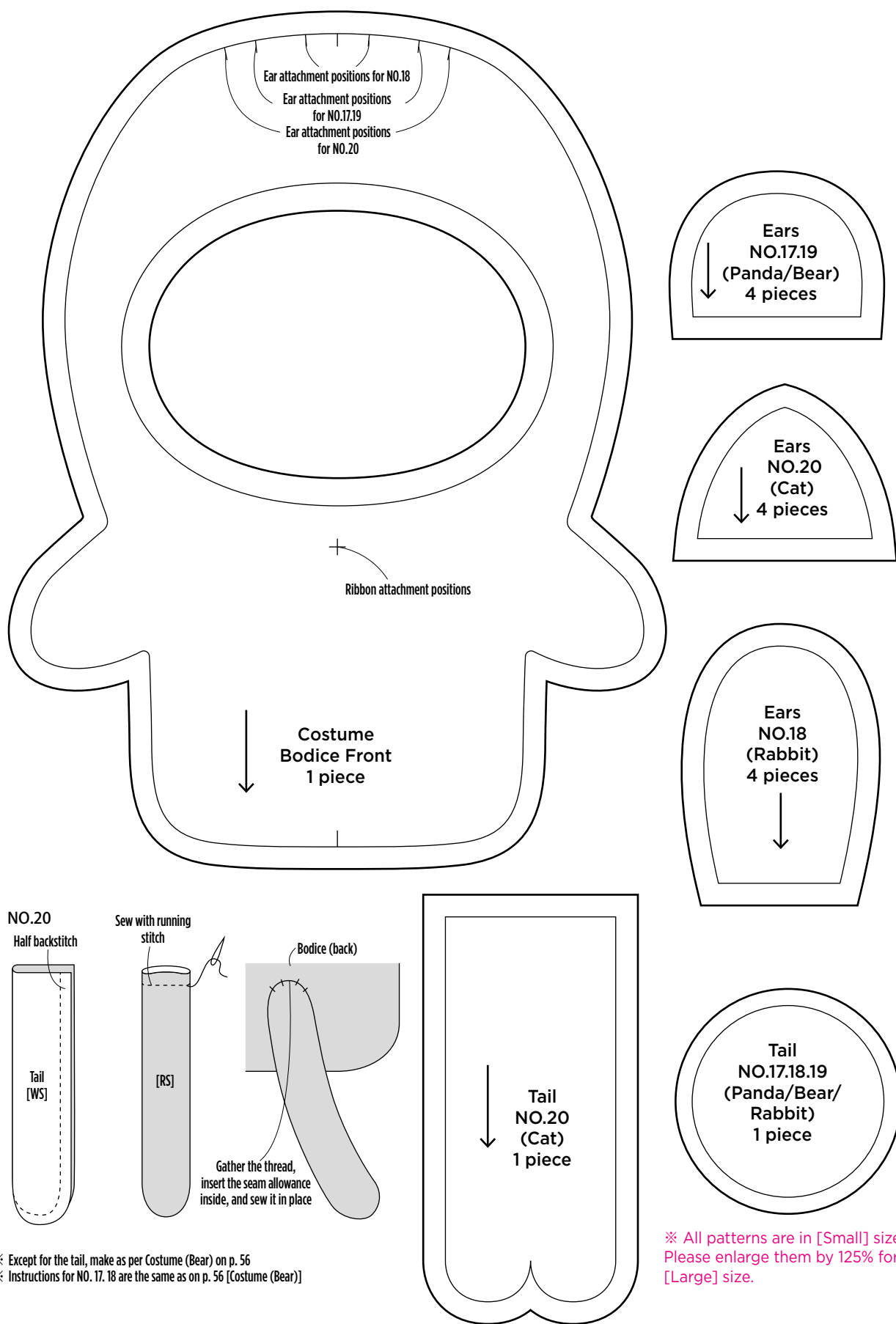
※ Add $\frac{1}{8}$ " (0.4cm) seam allowance before cutting.

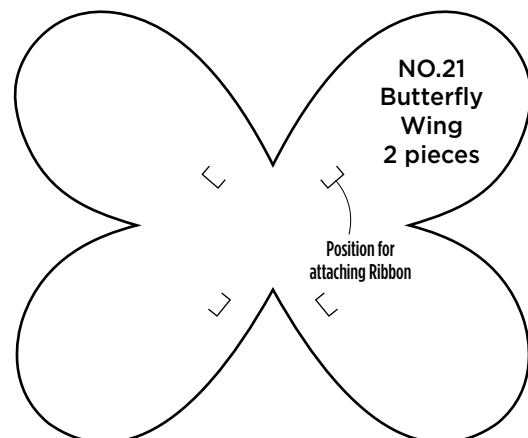
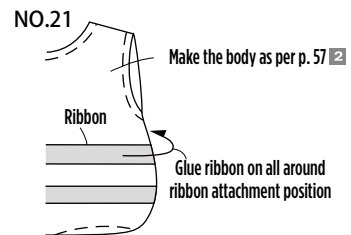
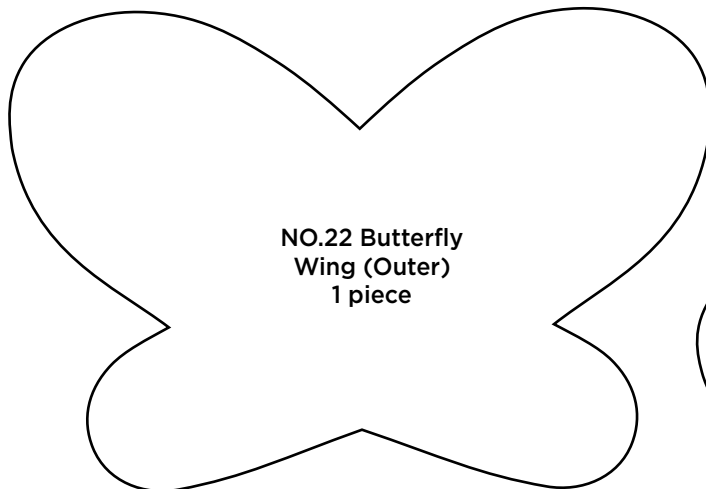
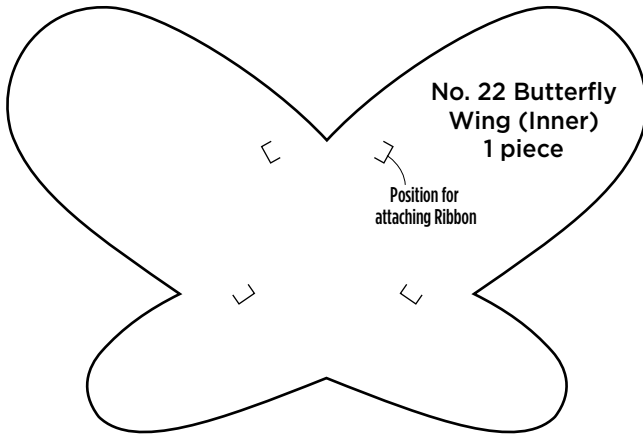
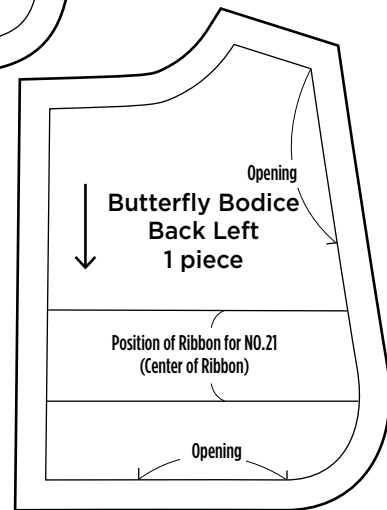
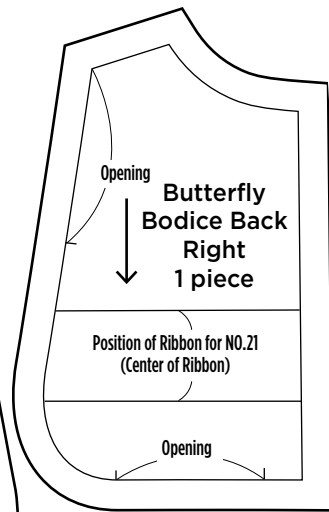
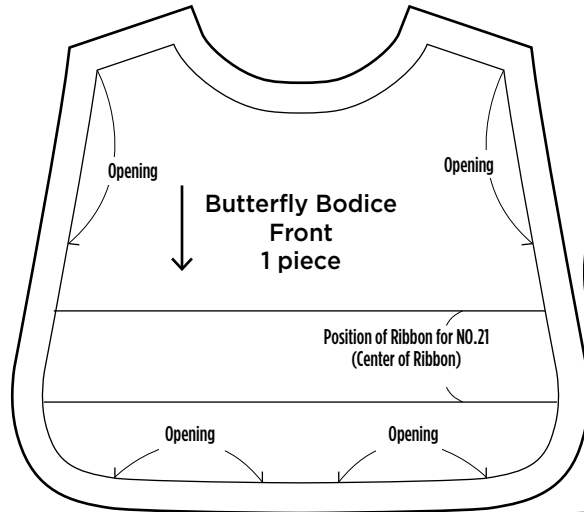




※ All patterns are in [Small] size. Please enlarge them by 125% for [Large] size.

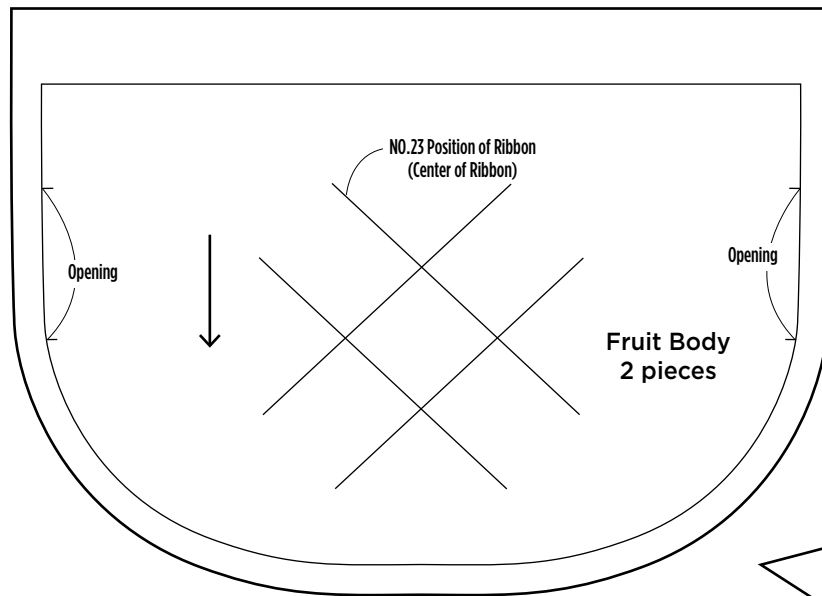




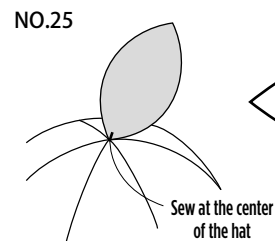
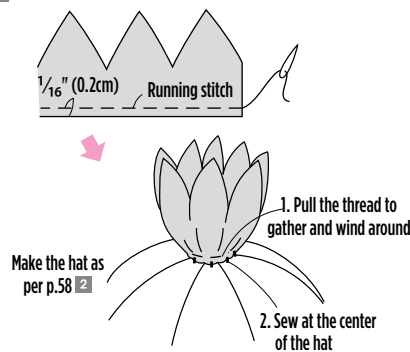
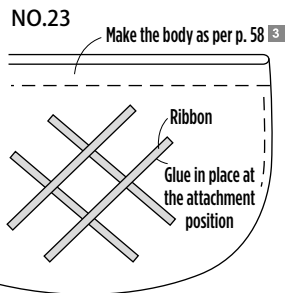
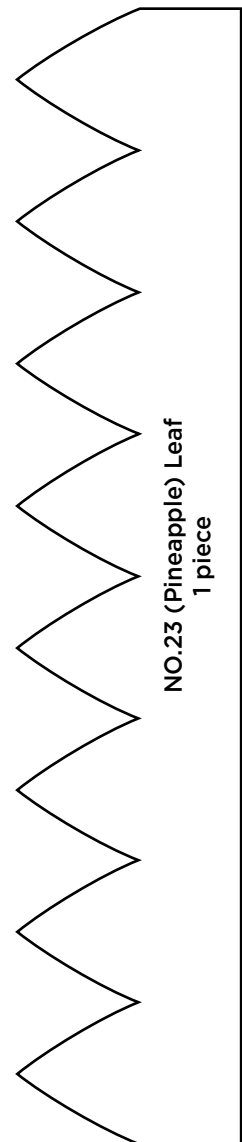
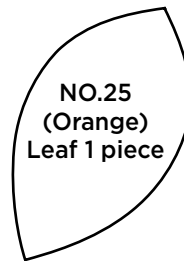
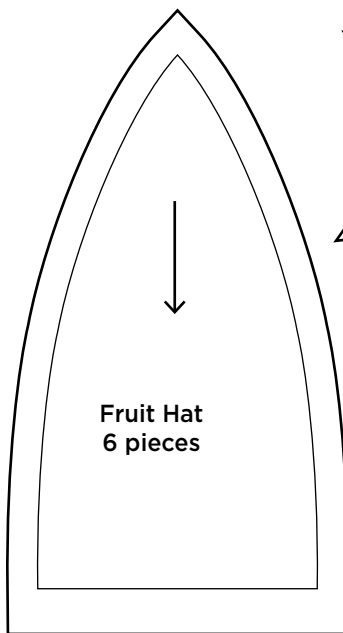


TIP

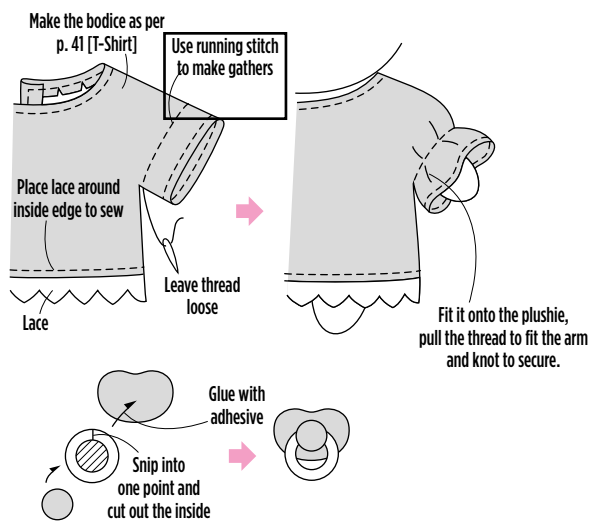
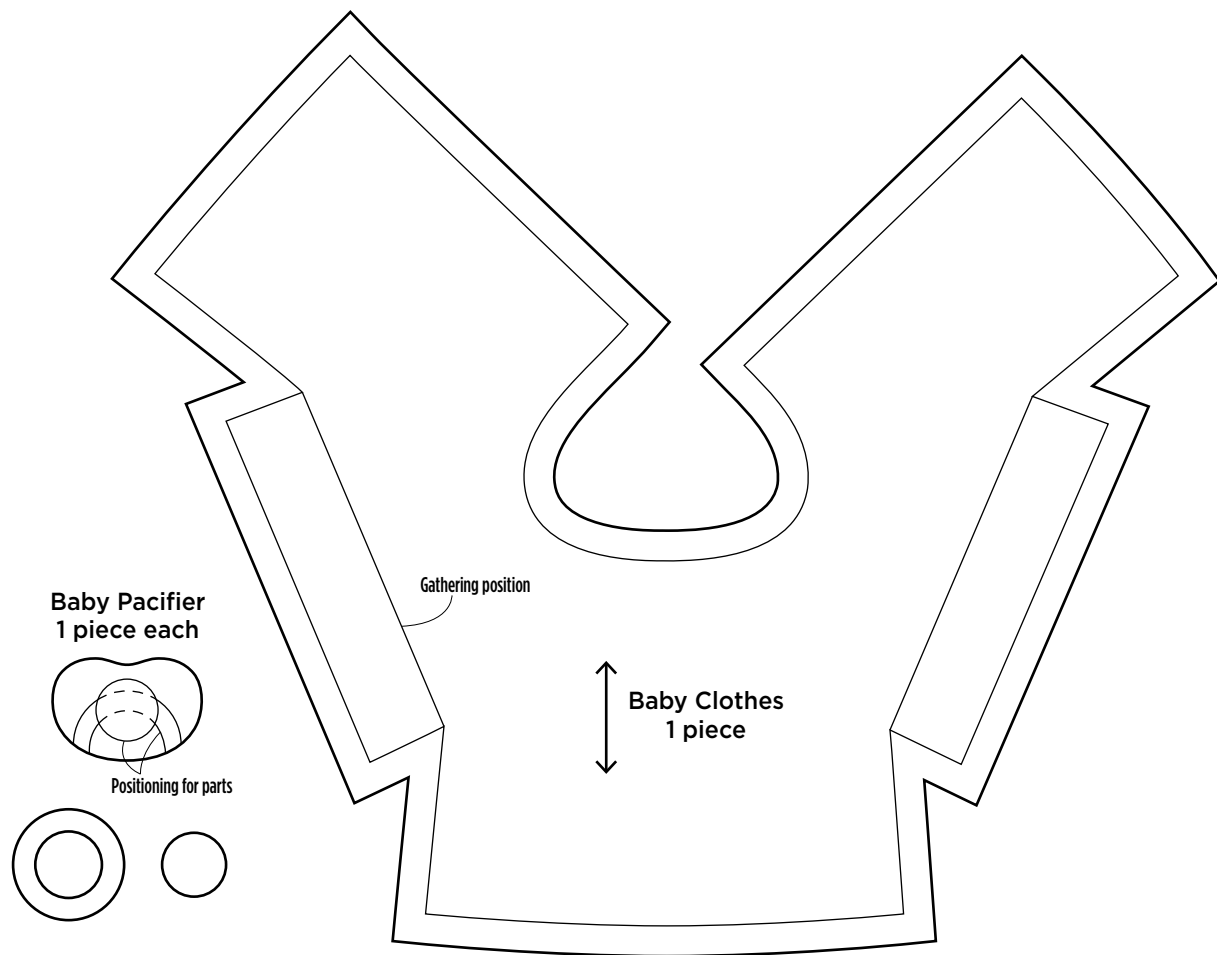
The patterns for the clothes in this book are reversed so that they can be placed onto fabric for tracing.



NO.24 Fruit Stem 1 piece

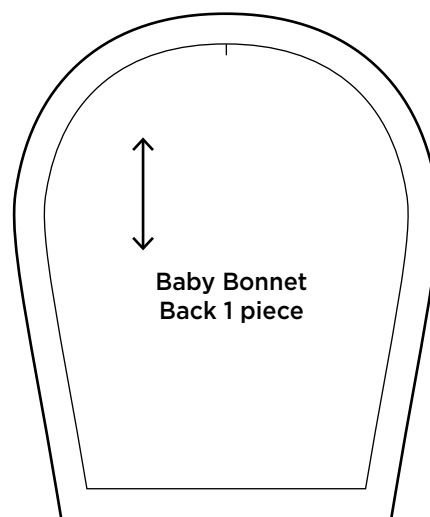


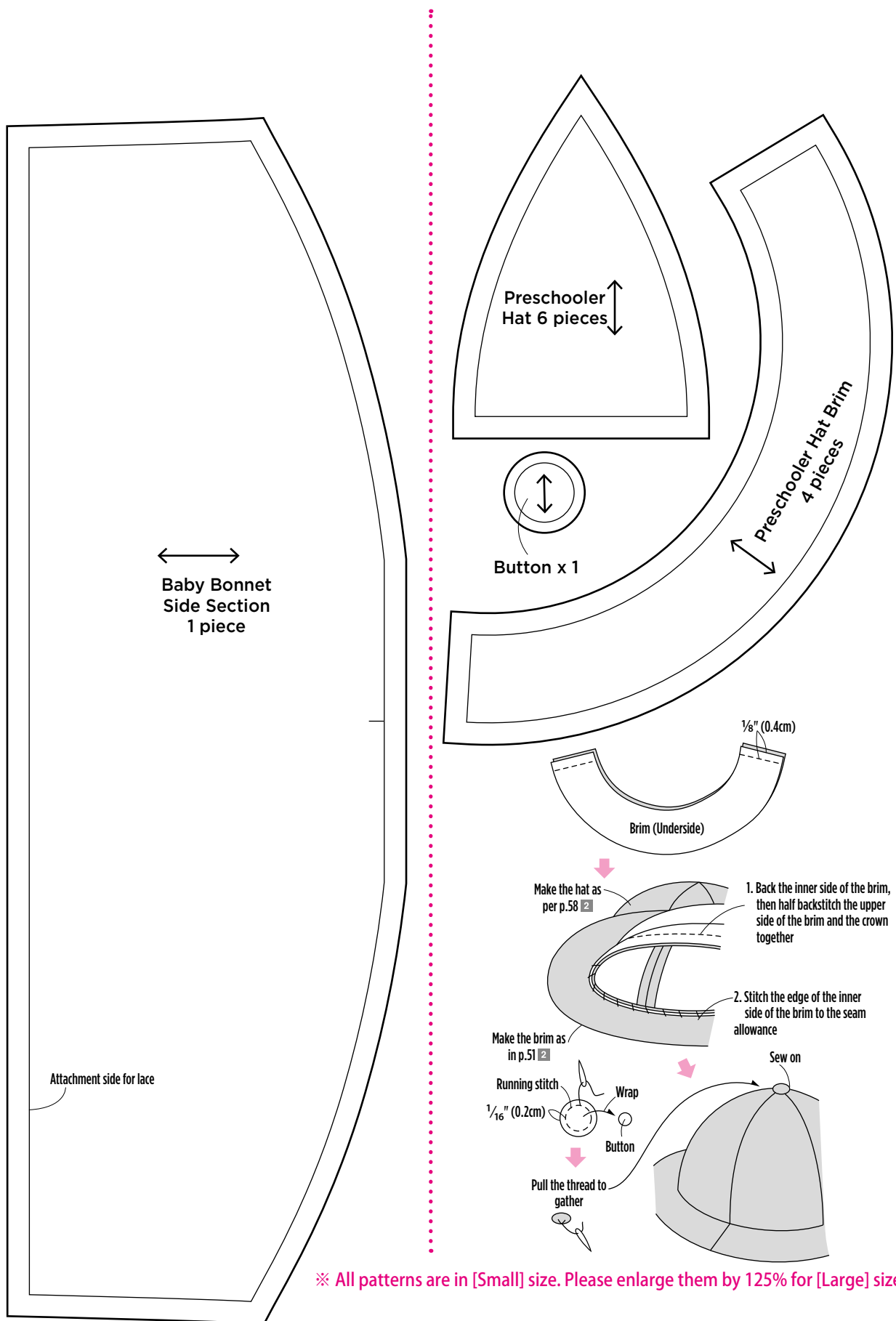
※ All patterns are in [Small] size. Please enlarge them by 125% for [Large] size.



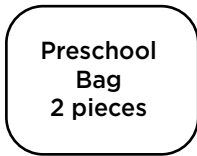
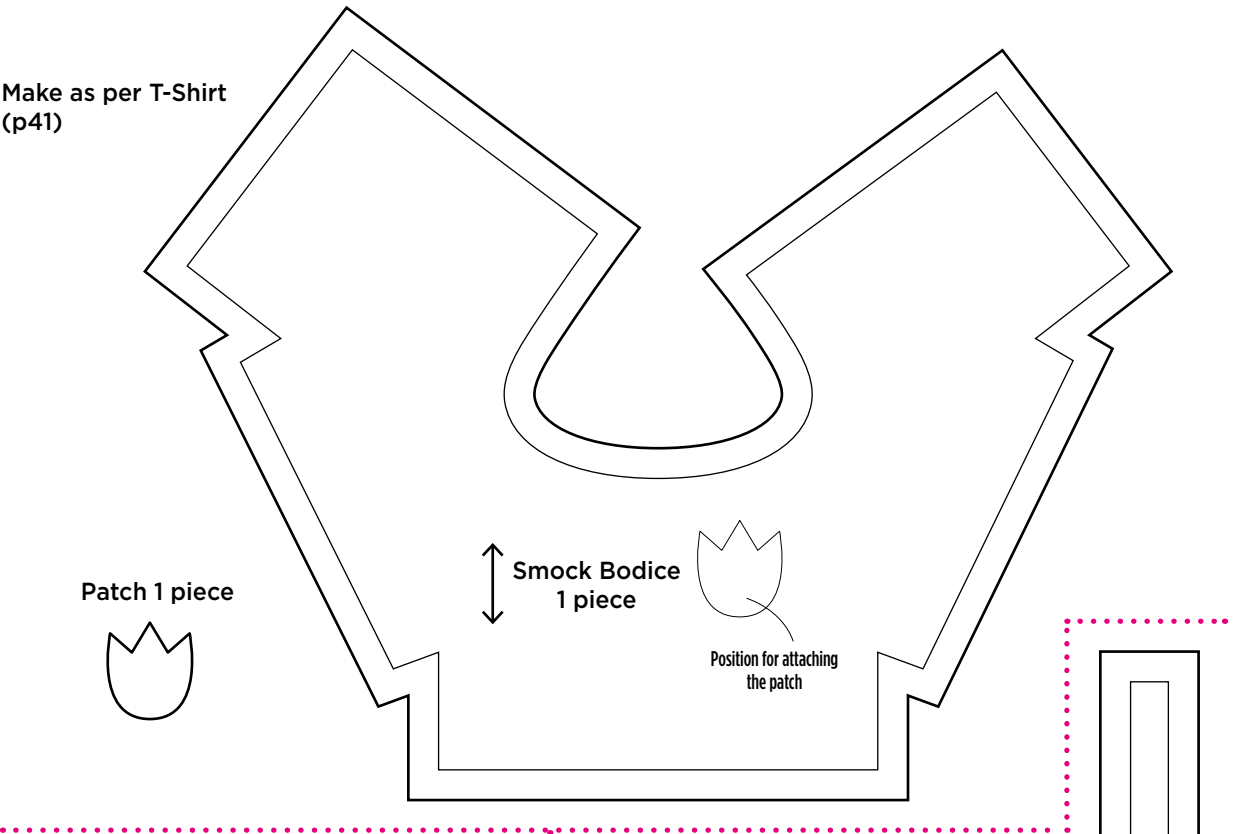
TIP

The patterns for the clothes in this book are reversed so that they can be traced onto fabric placed upside down.





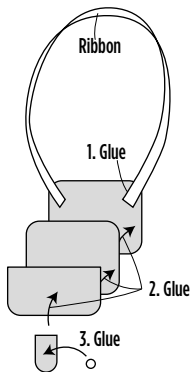
Make as per T-Shirt
(p41)



Tab 1 piece

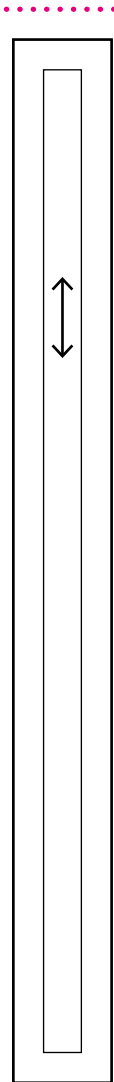
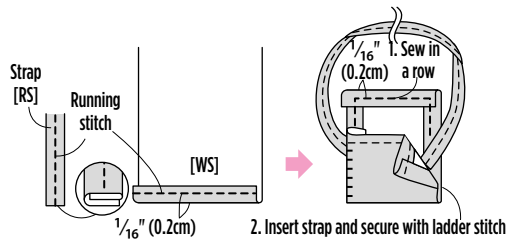


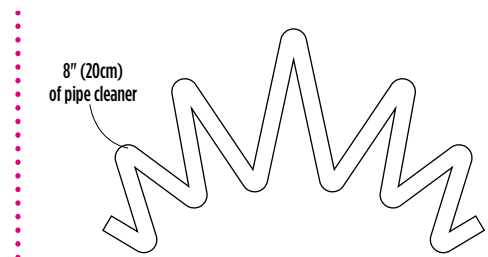
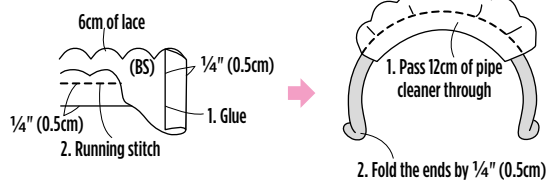
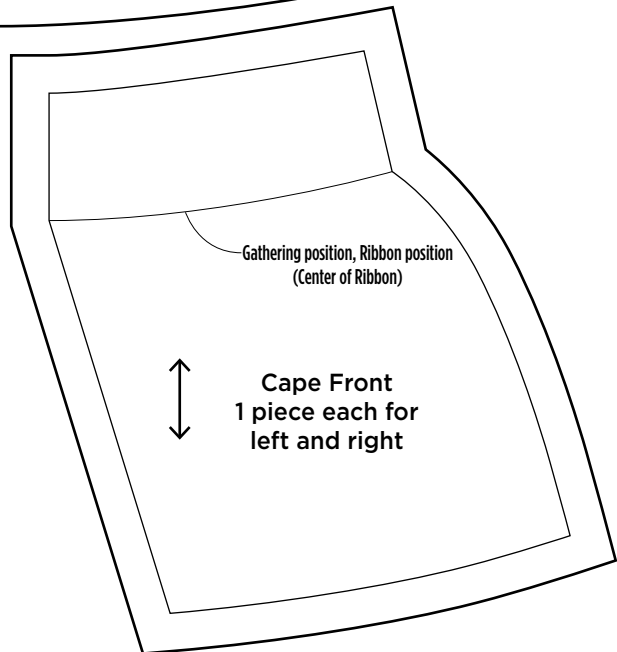
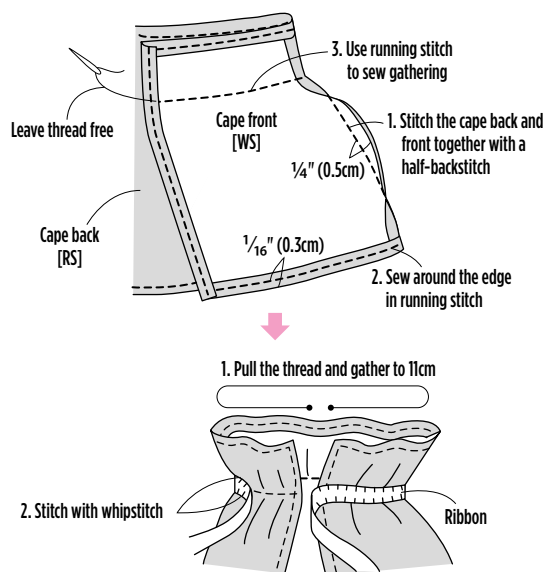
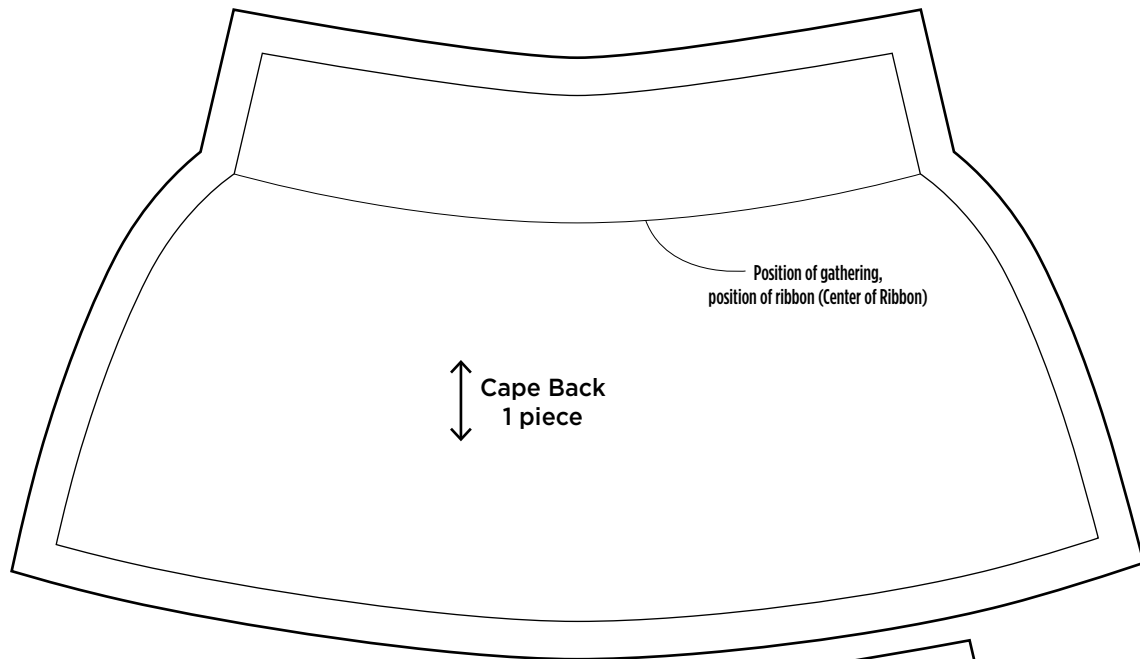
Button x 1



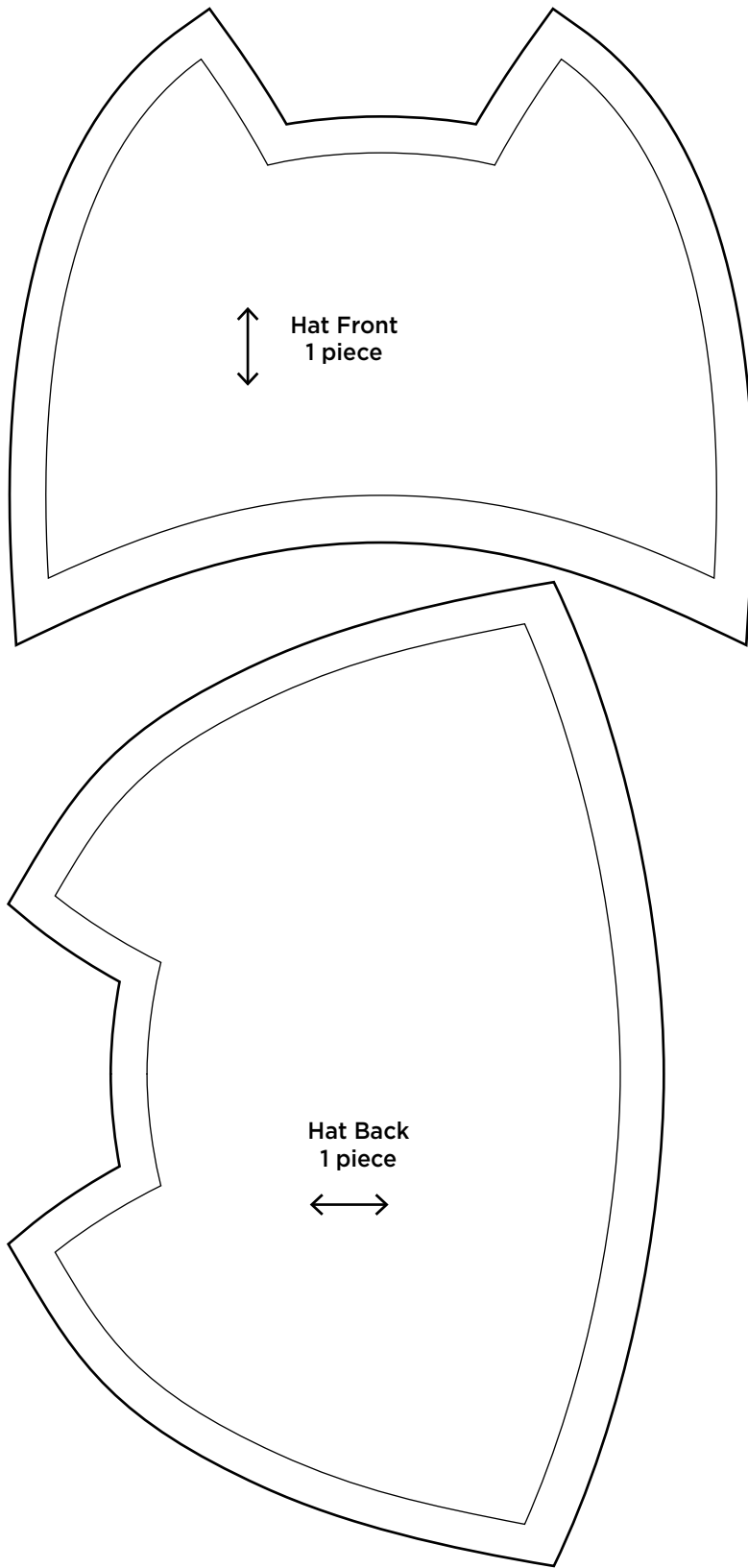
Bag Strap 1 piece

Fold lines

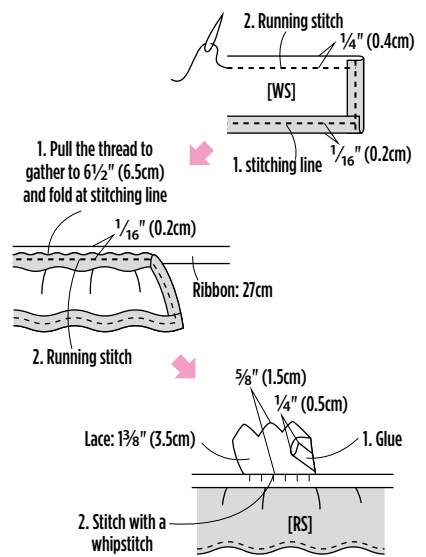
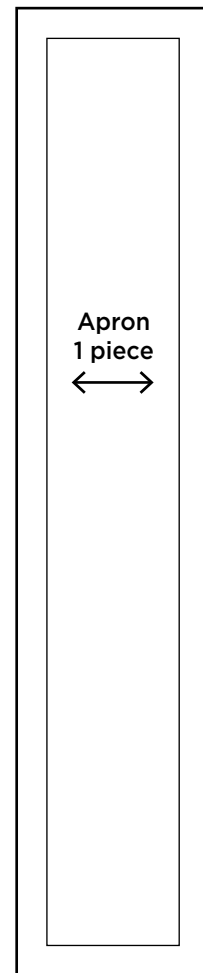


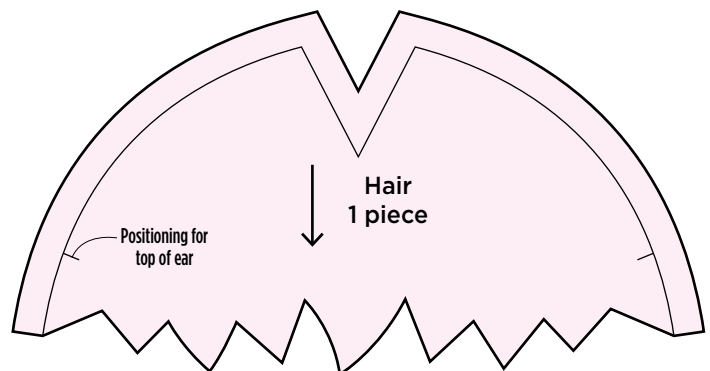
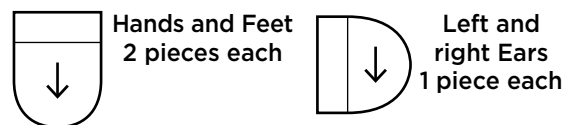
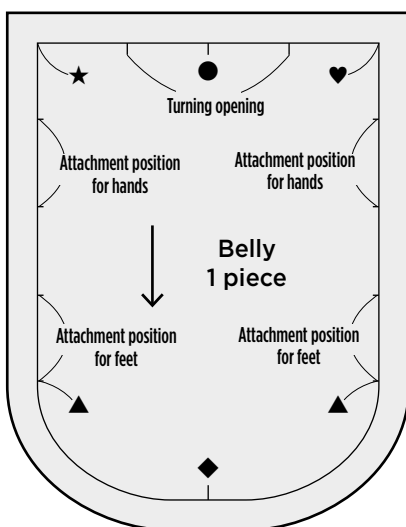
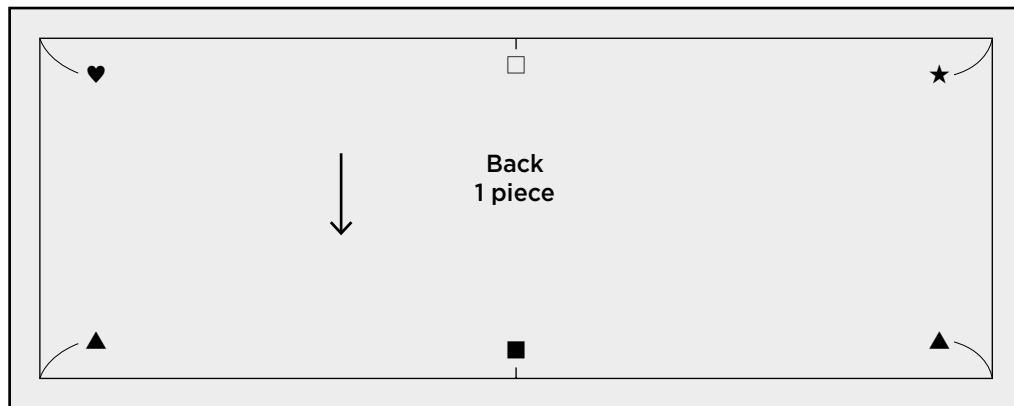
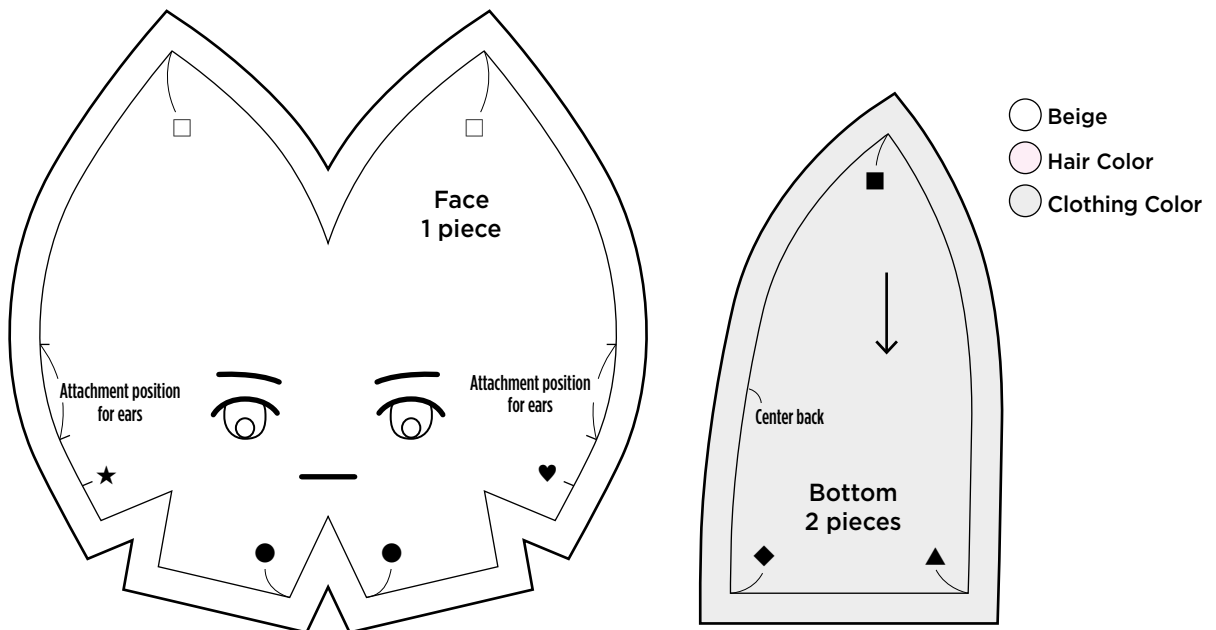


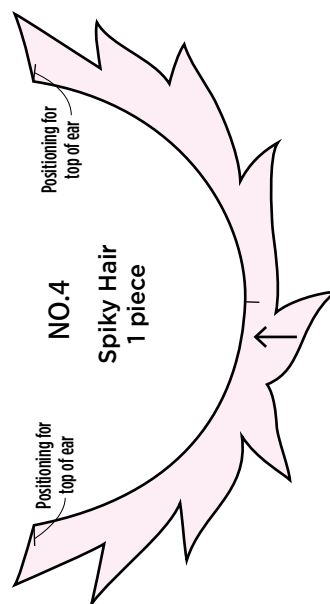
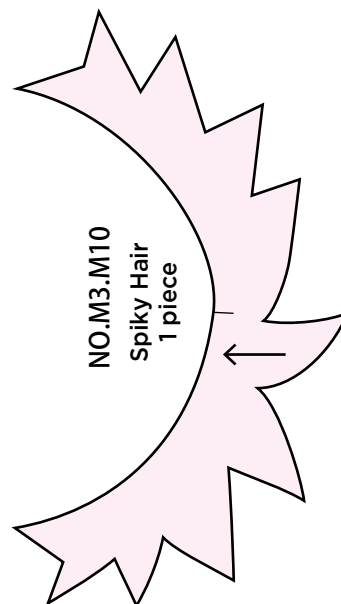
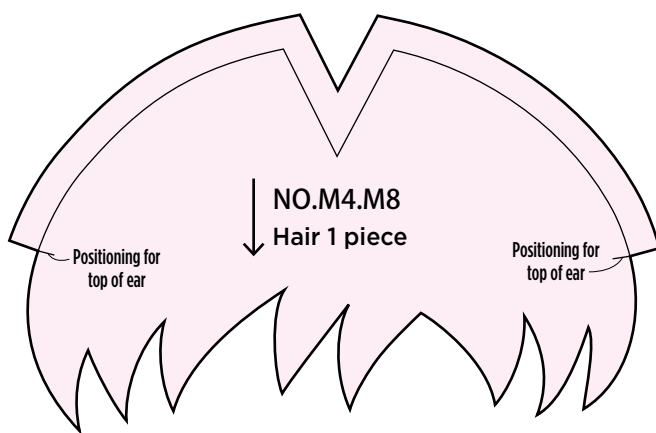
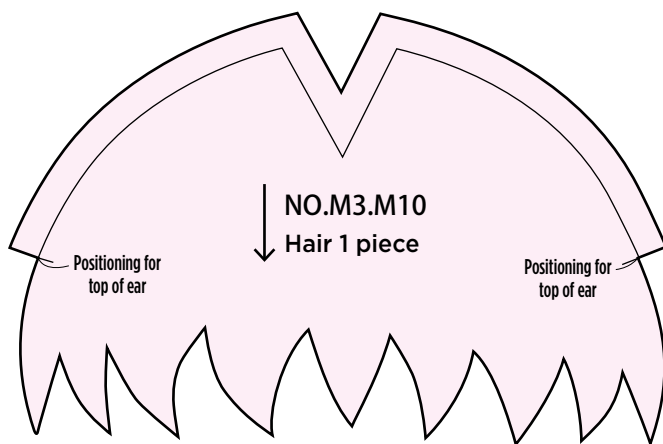
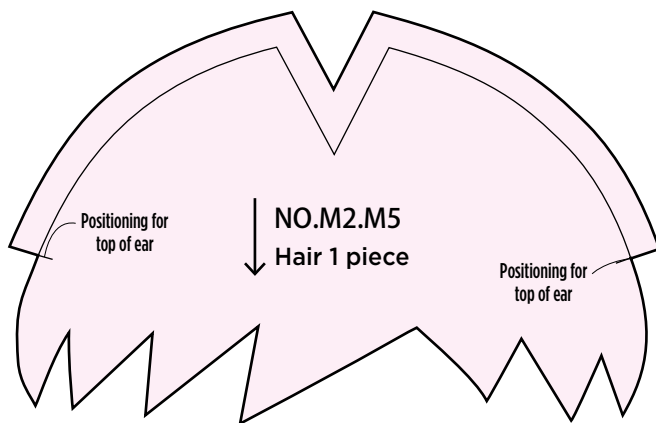
※ Please enlarge them by 125% for [Large] size.

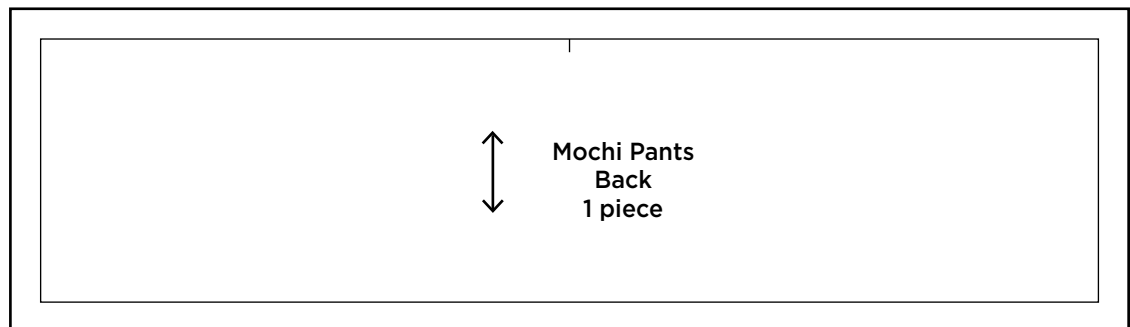
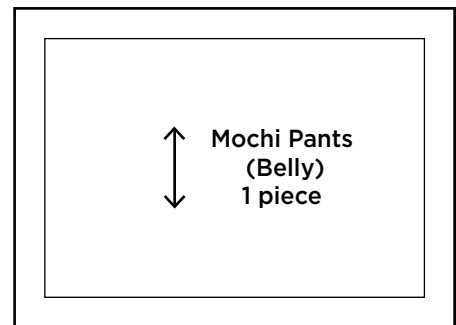
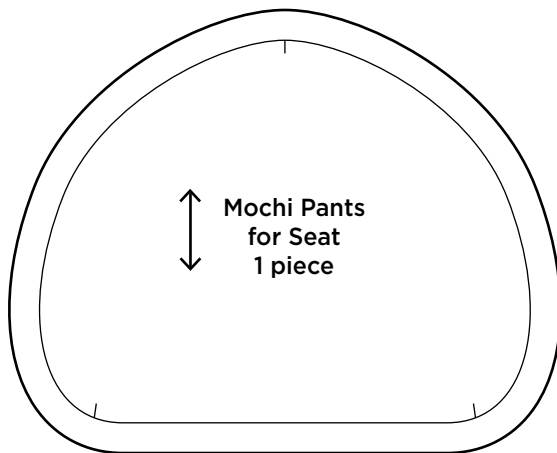
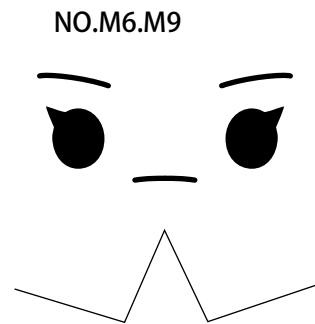
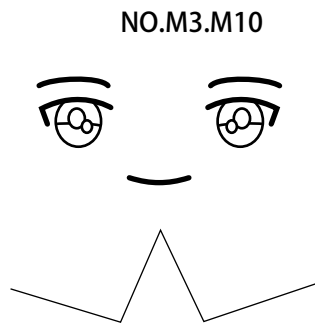
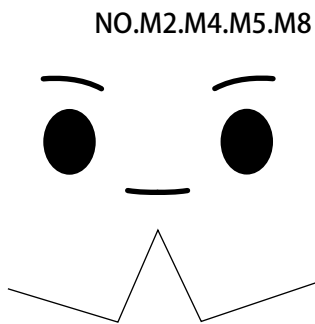
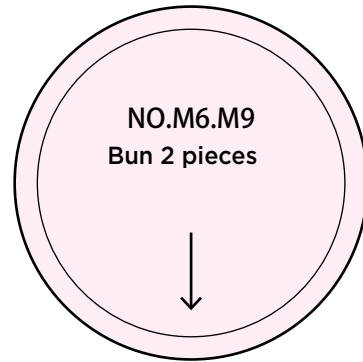
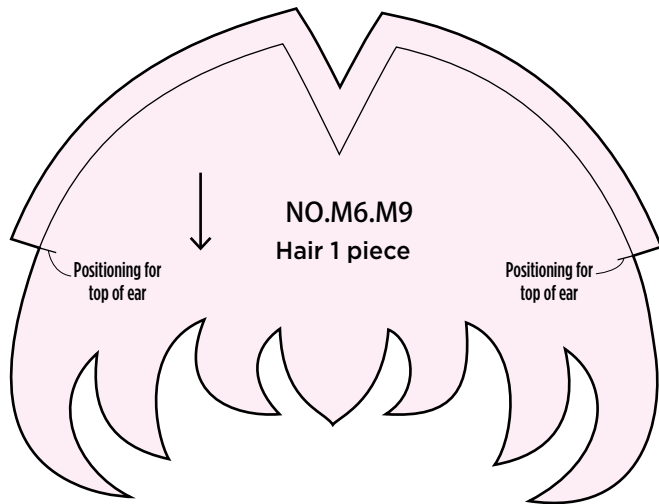


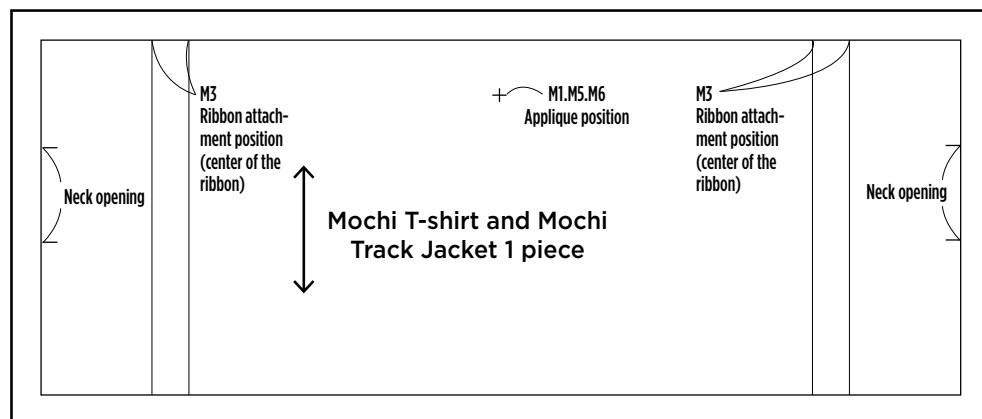
※ Patterns are in [Small] size. Enlarge to 125% for [Large] size.







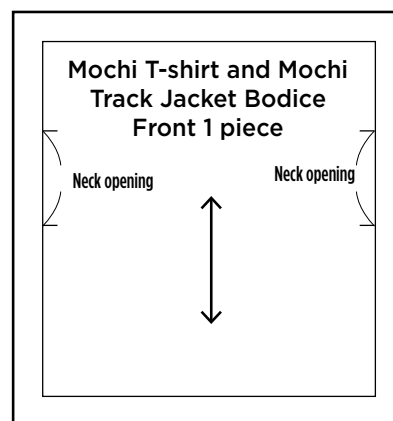
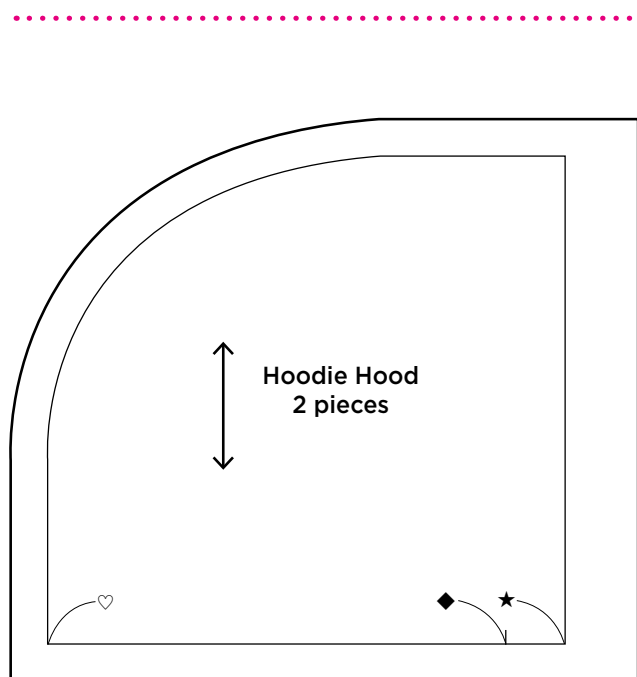




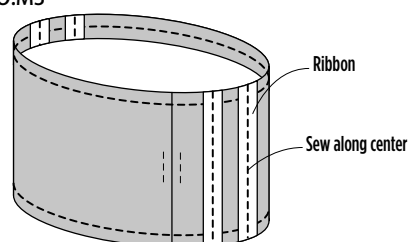
NO.M1.M5
Applique
1 piece



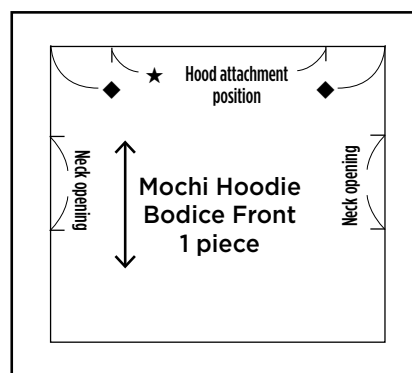
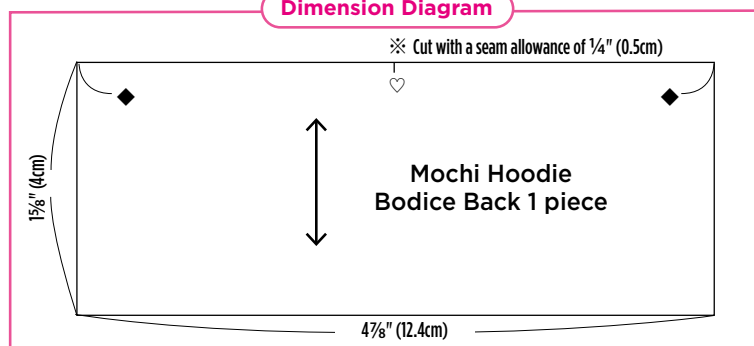
NO.M6

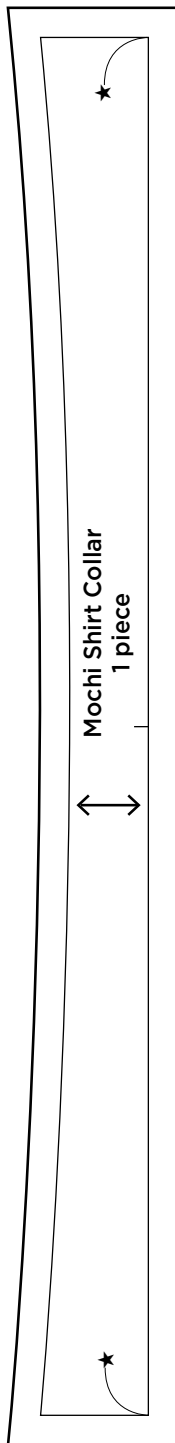


NO.M3

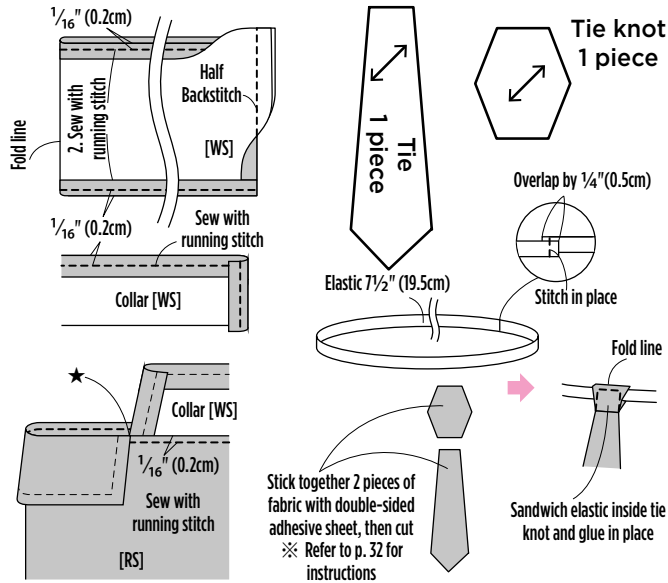
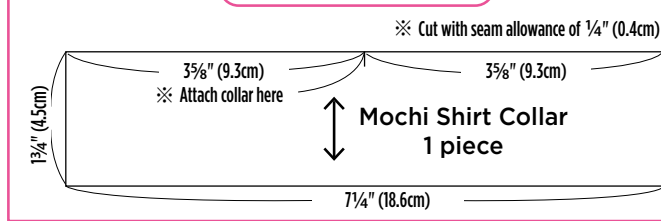


Dimension Diagram



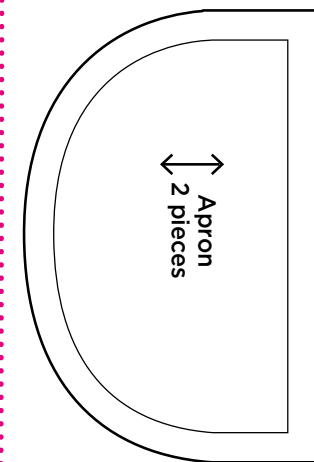
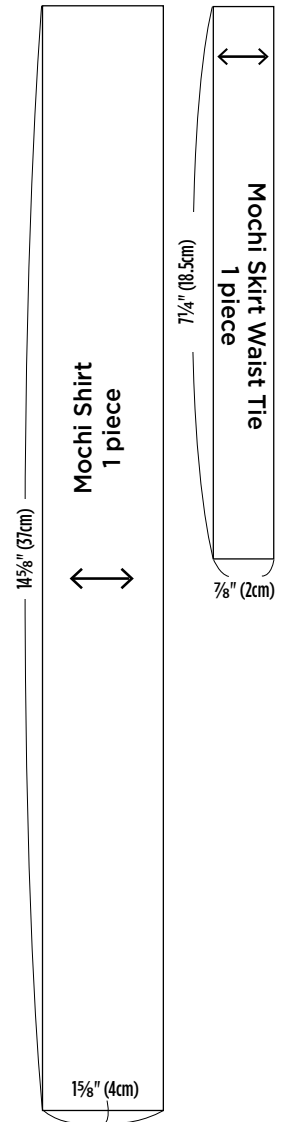


Dimension Diagram



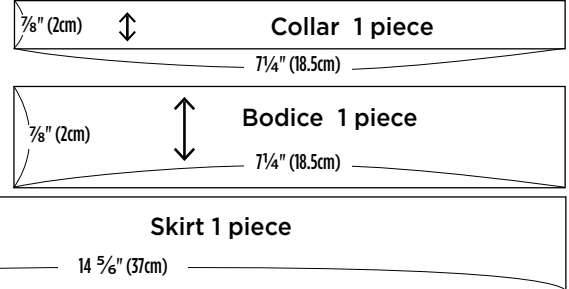
Dimension Diagram

※ Cut with seam allowance of 1/4" (0.4cm)

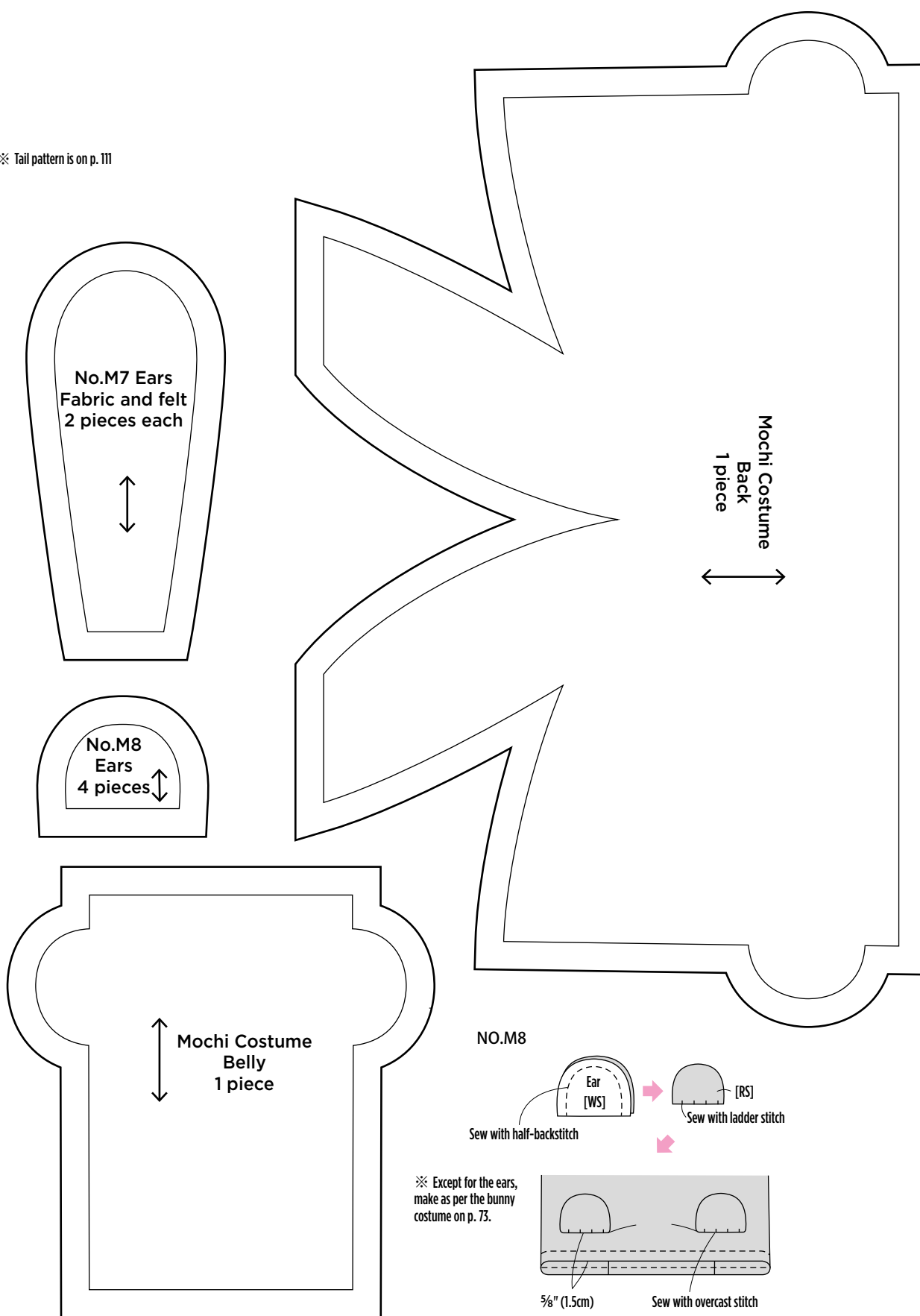


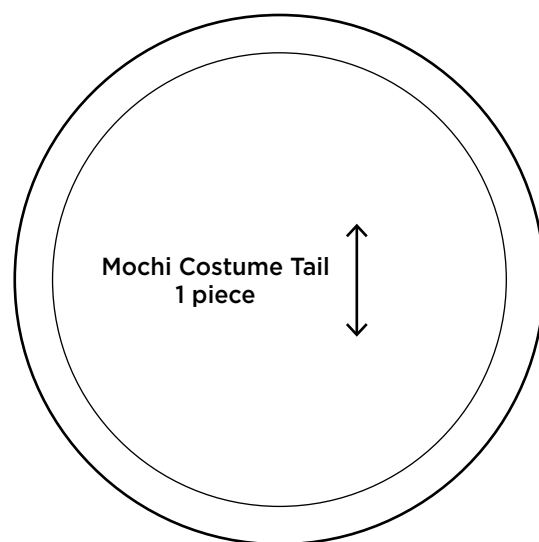
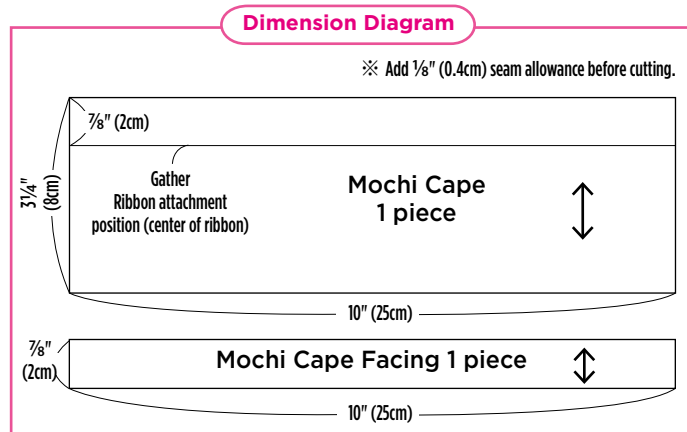
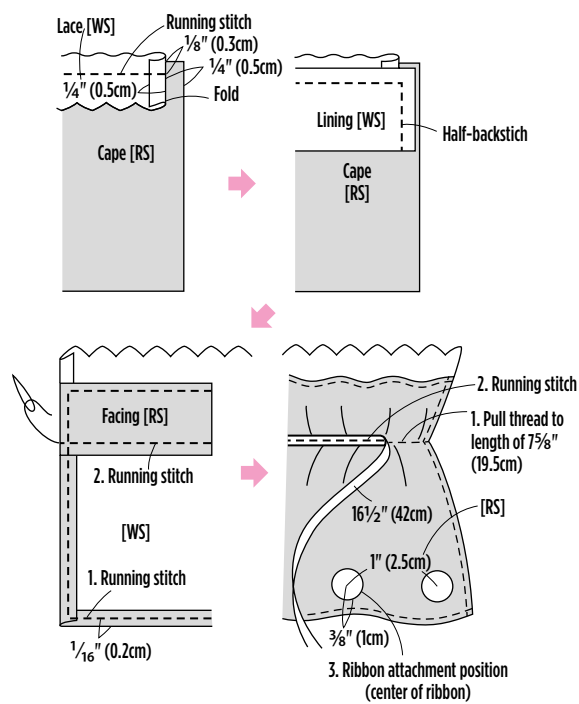
Dimension Diagram

※ Cut with seam allowance of 1/4" (0.4cm)

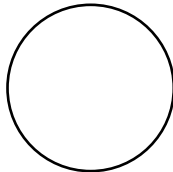


※ Tail pattern is on p. 111

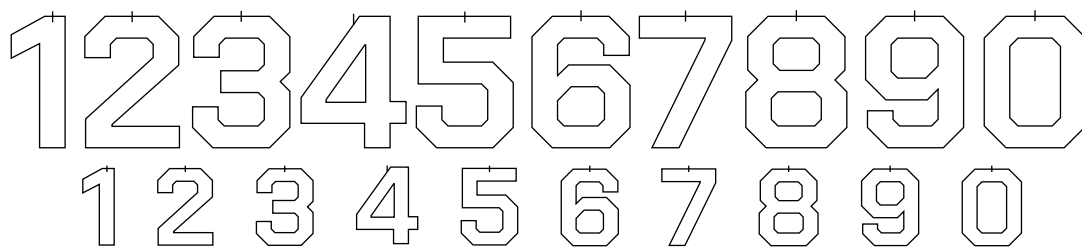
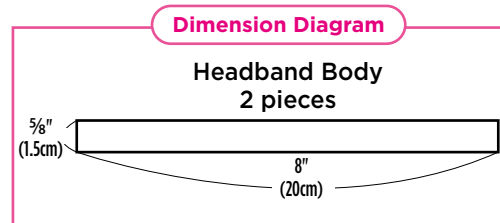




Hat Headband Top 1 piece



Joint 1 piece



※ The patterns are in [Small] size. Enlarge to 125% for [Large].