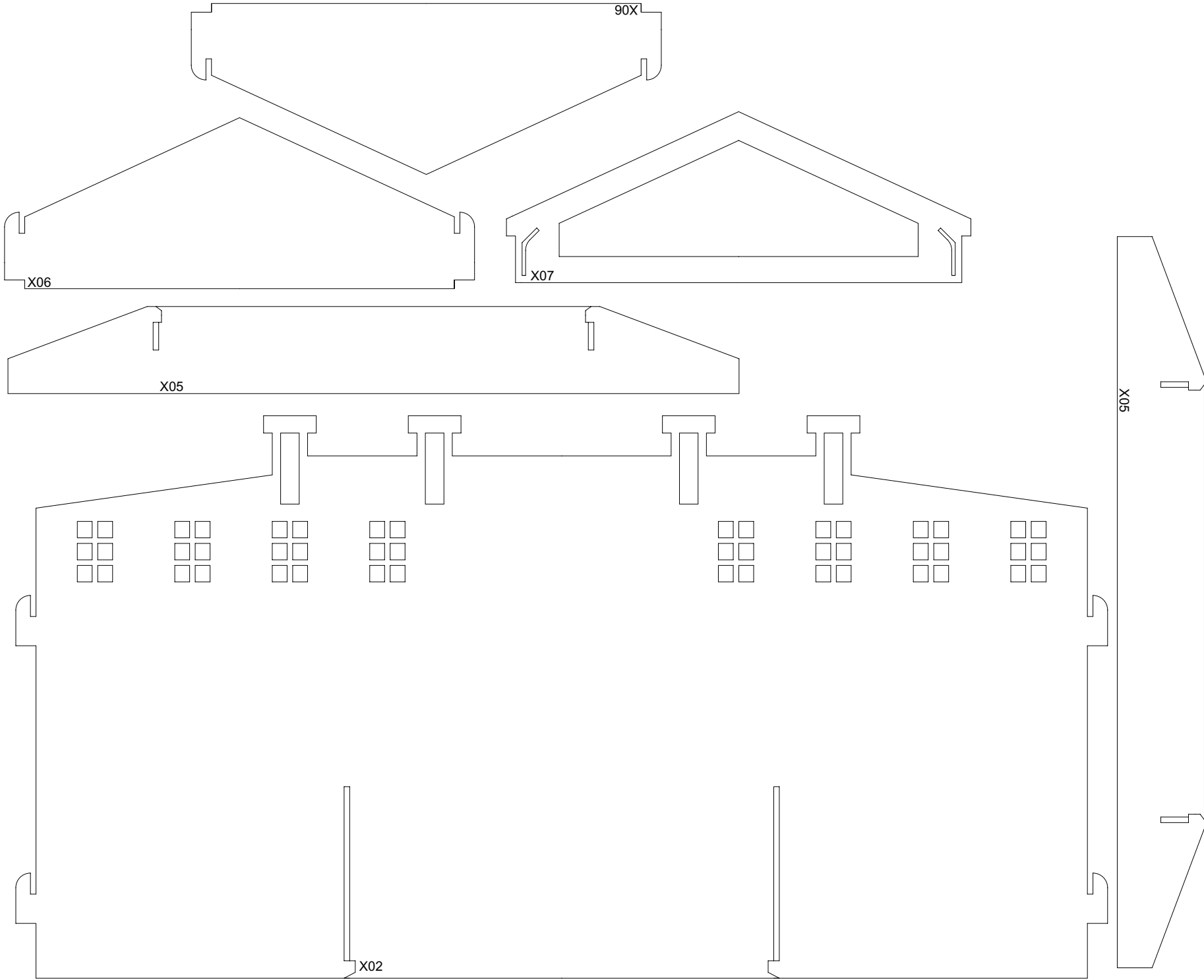
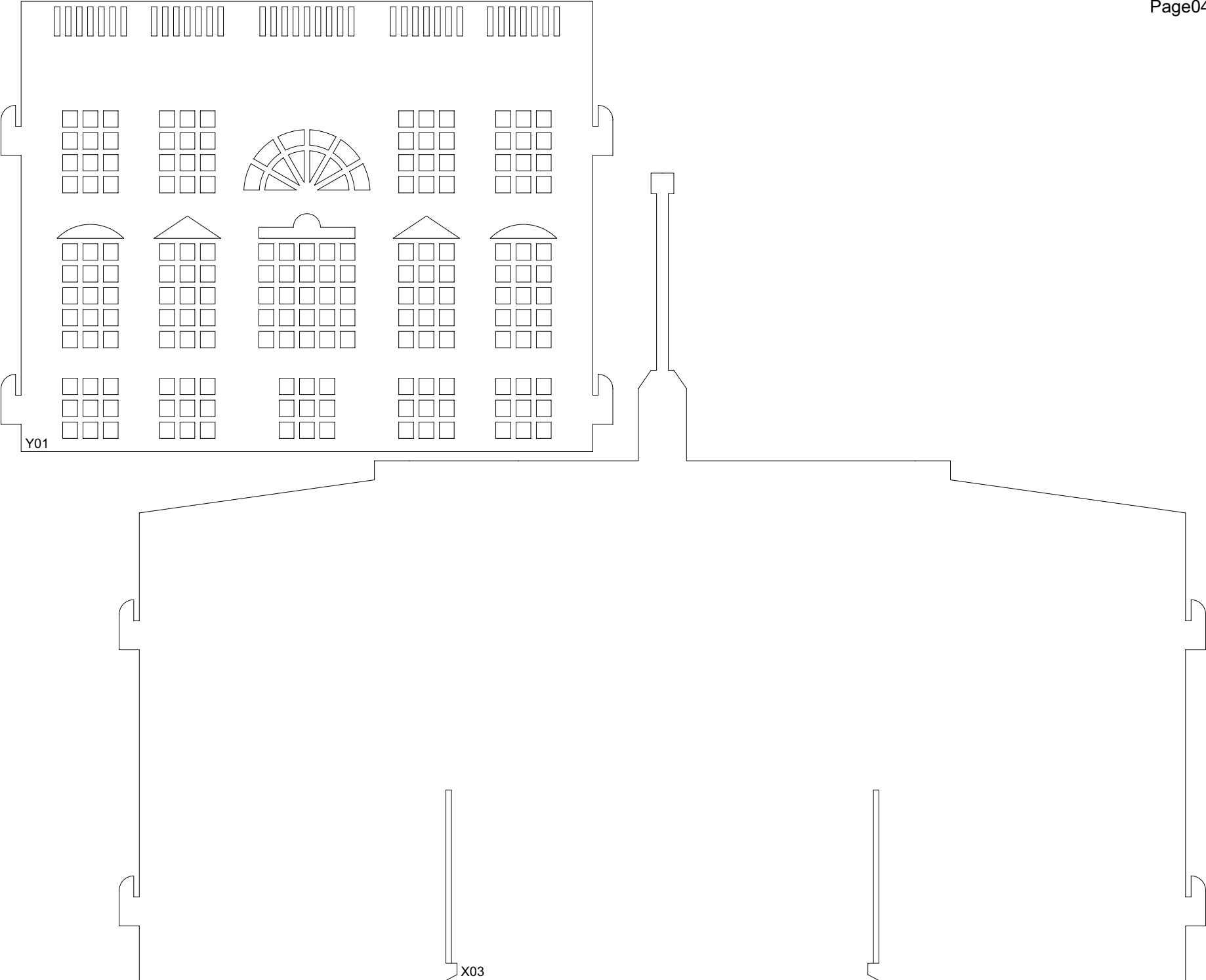


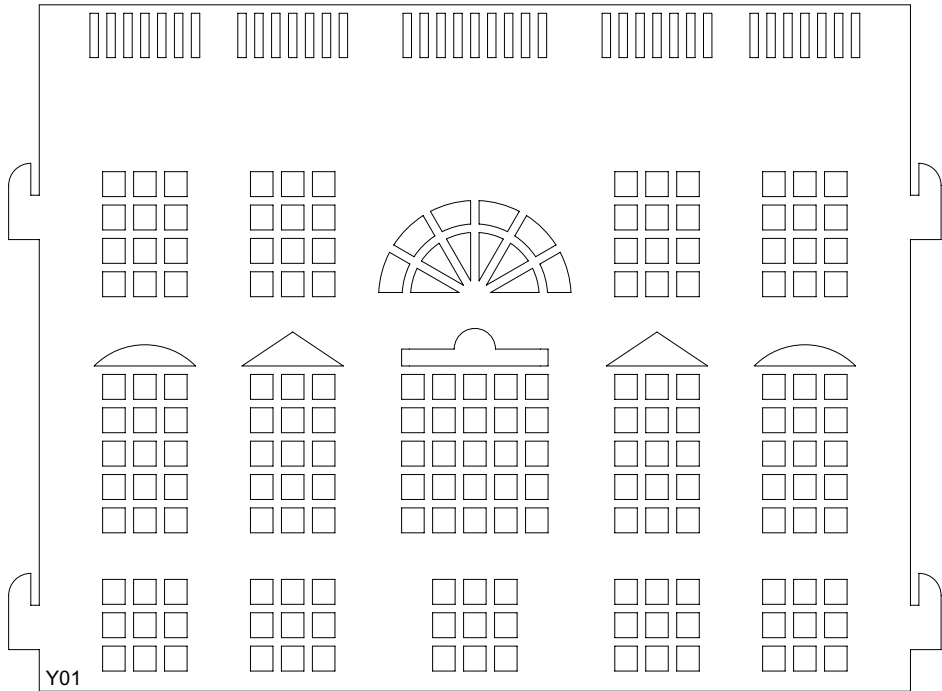
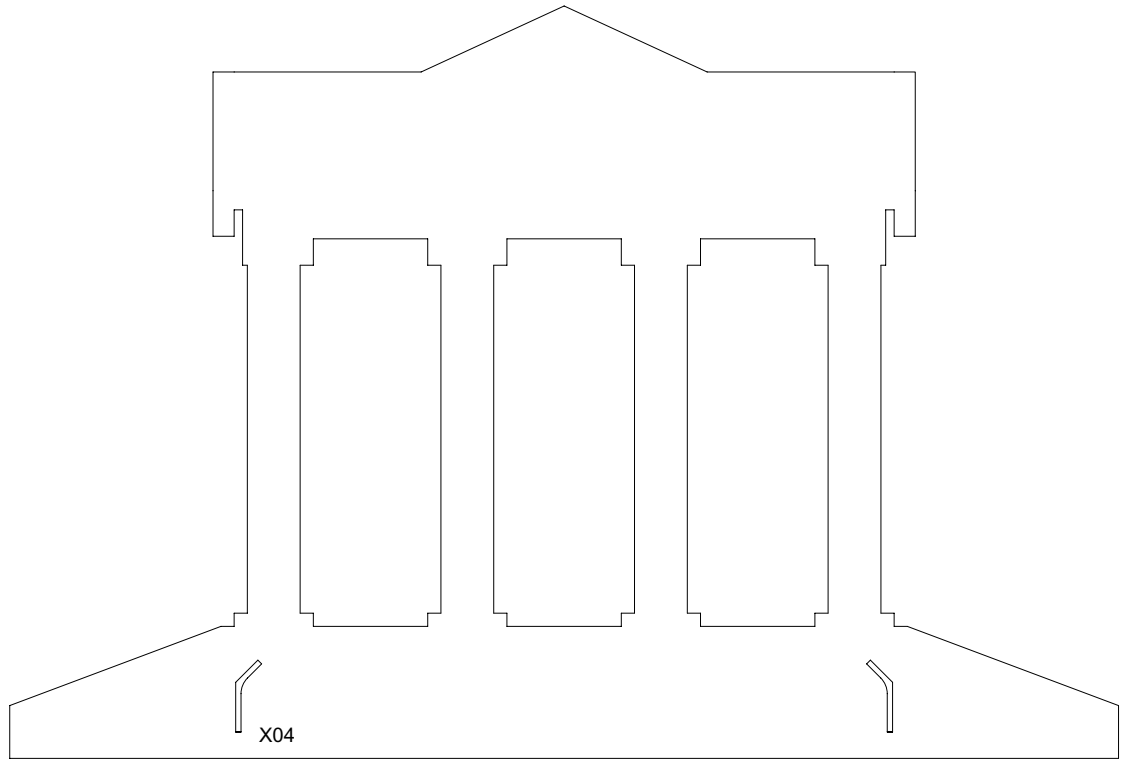
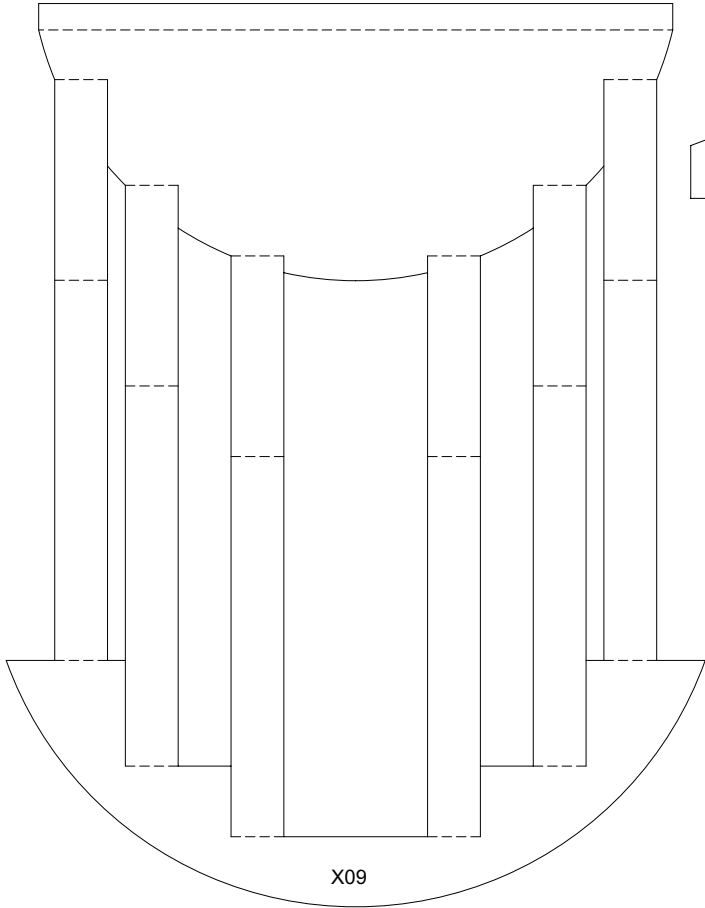
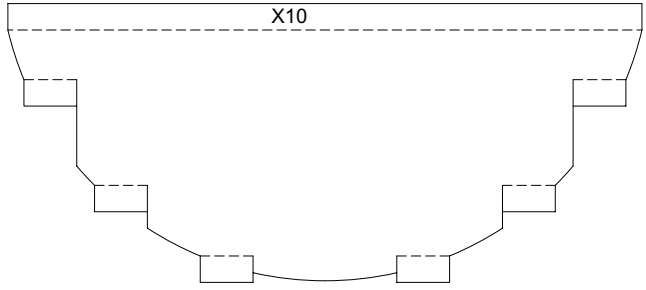
Print on 60lb to 120lb 8.5" x 11" card stock. Scaling 100%. Do not use your "fit to paper" option on your printer.



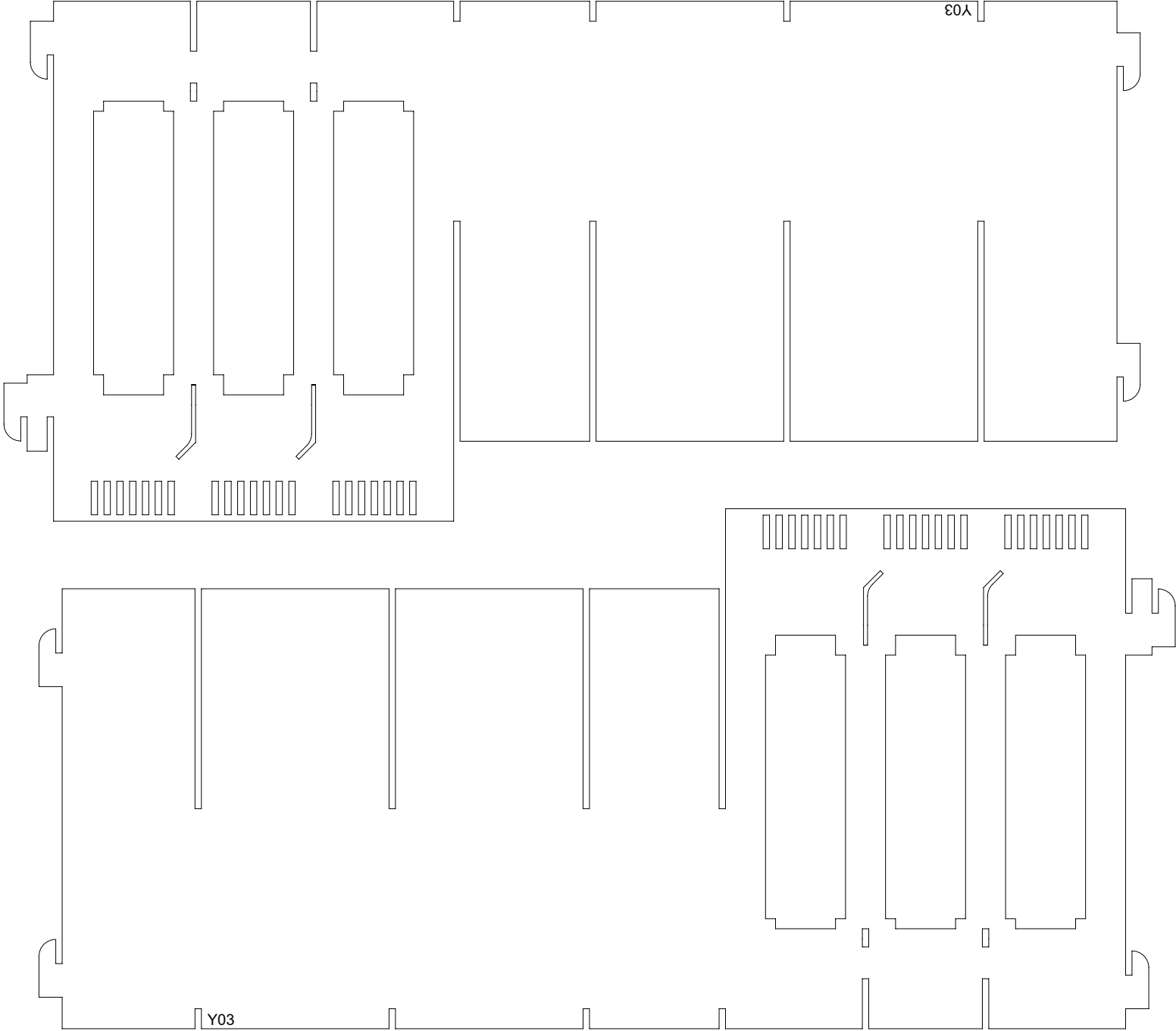
Print on 60lb to 120lb 8.5" x 11" card stock. Scaling 100%. Do not use your "fit to paper" option on your printer.

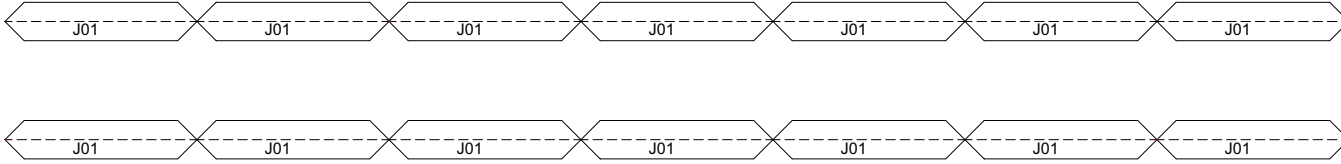
Print on 60lb to 120lb 8.5" x 11" card stock. Scaling 100%. Do not use your "fit to paper" option on your printer.





Print on 60lb to 120lb 8.5" x 11" card stock. Scaling 100%. Do not use your "fit to paper" option on your printer.

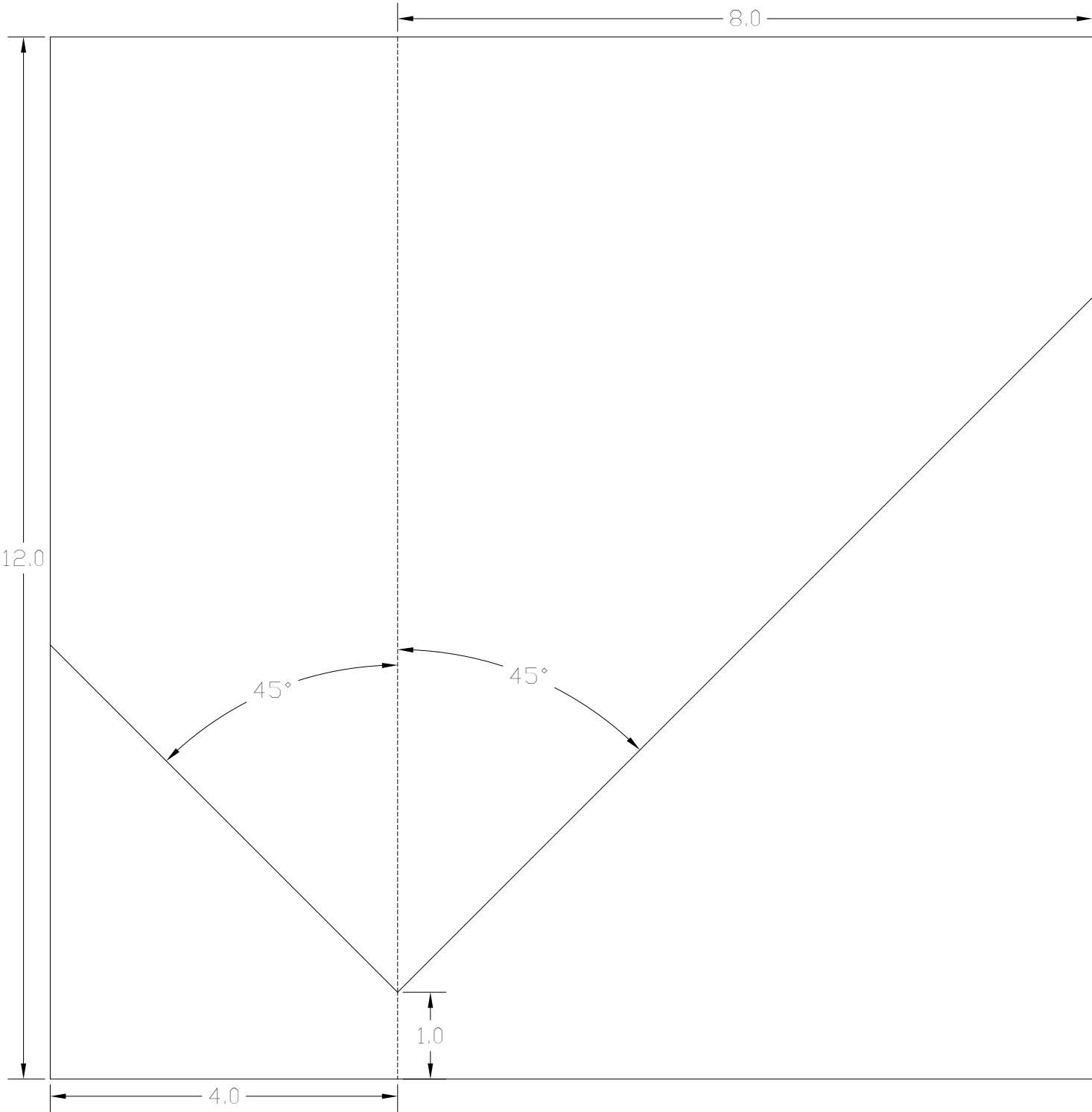




Print on 20lb 8.5" x 11" paper. Scaling 100%. Do not use your "fit to paper" option on your printer.

**Don't print this page.**

Cut 12" x 8" and 12" x 4" stiff cardboards.  
Glue a paper strip to joint them.  
Then, use pencil to draw two 45° lines as shown in the figure.



Unit: inch