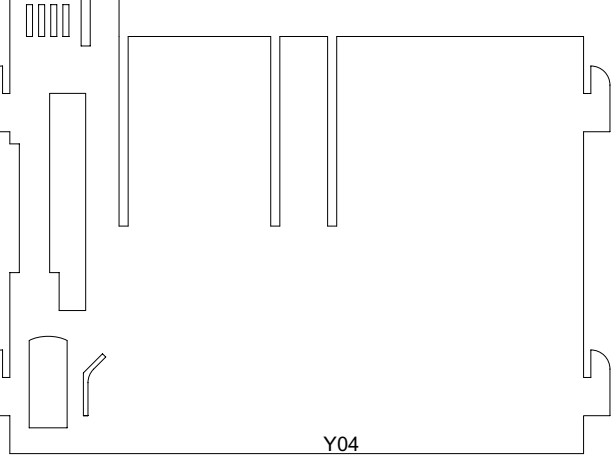
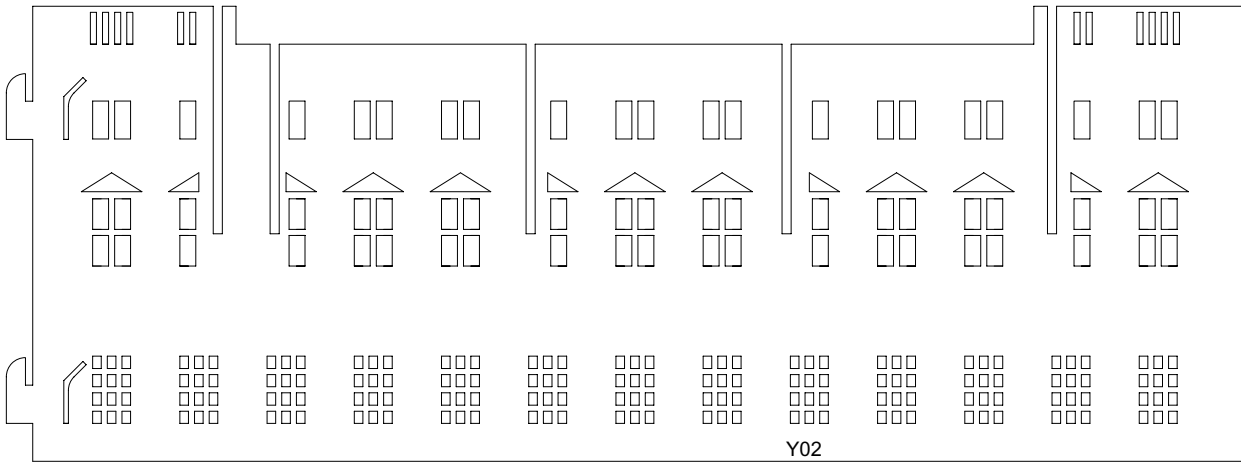
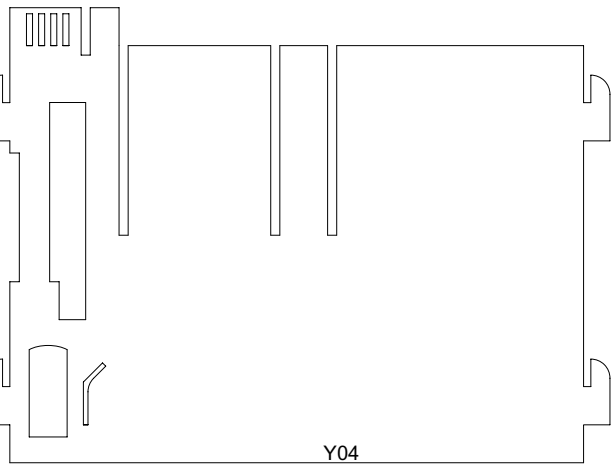
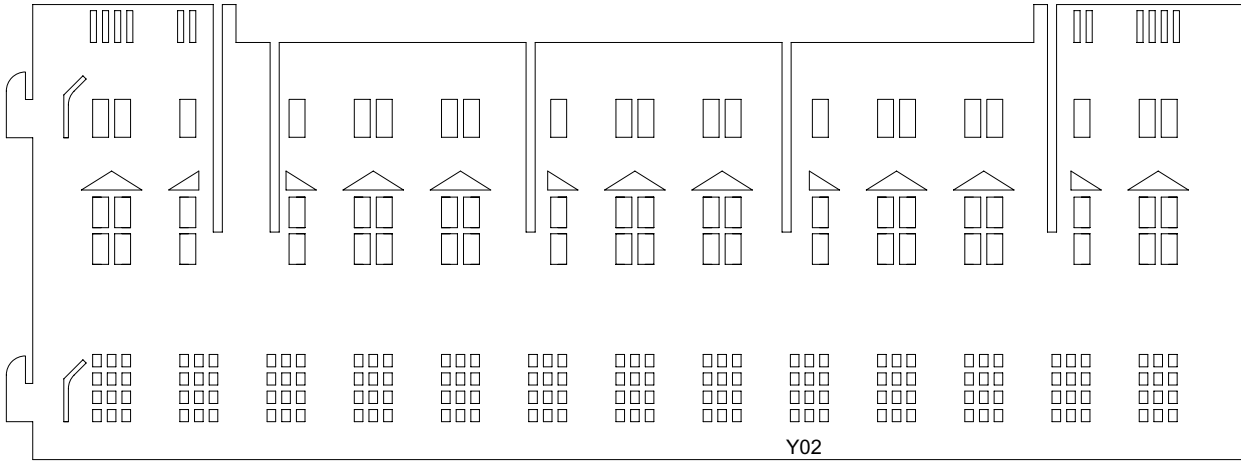
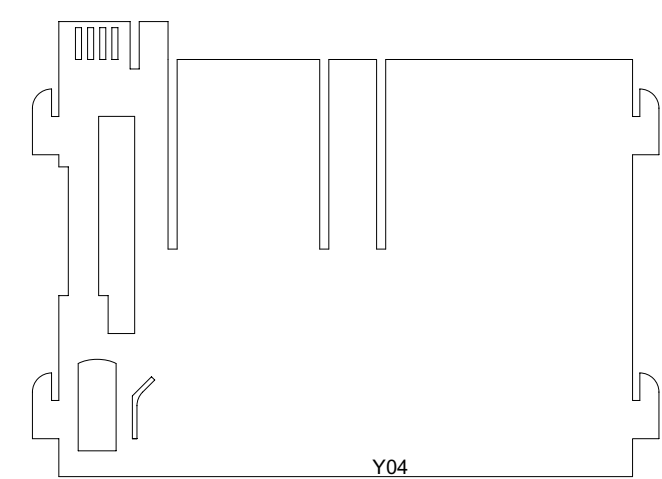
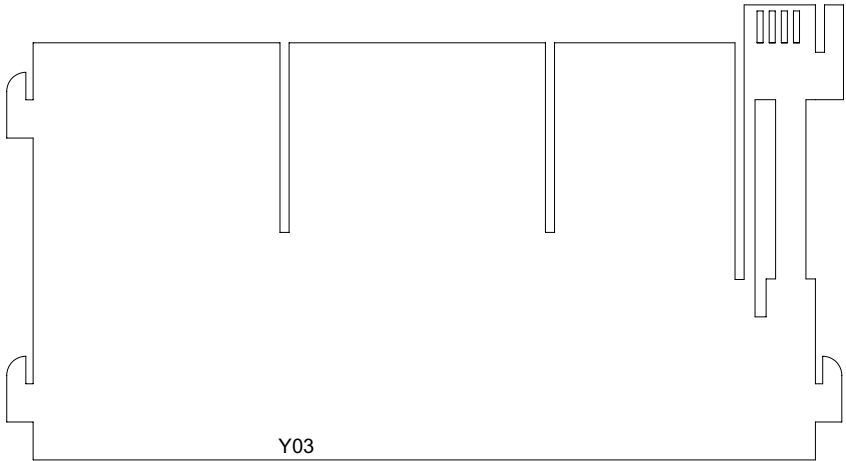
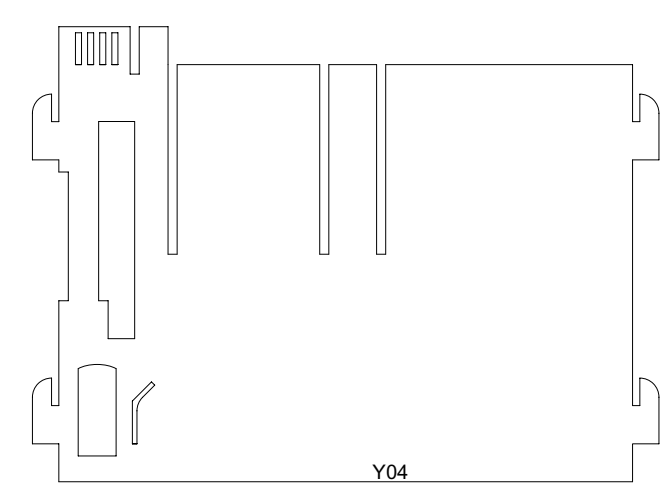
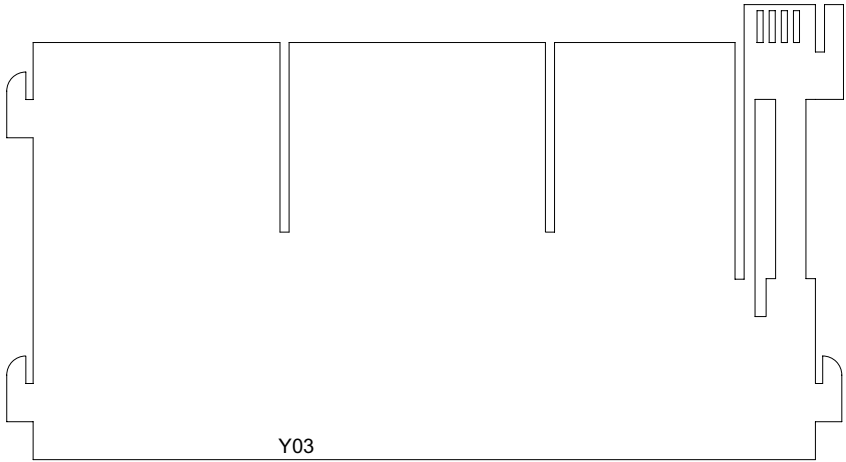
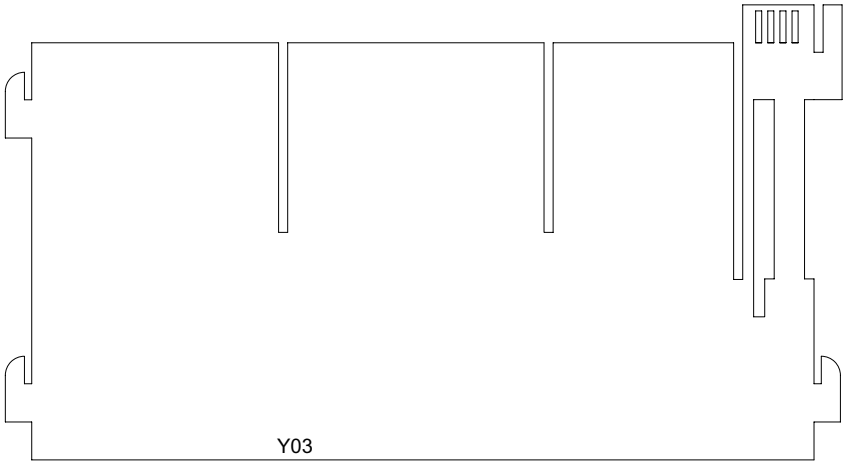
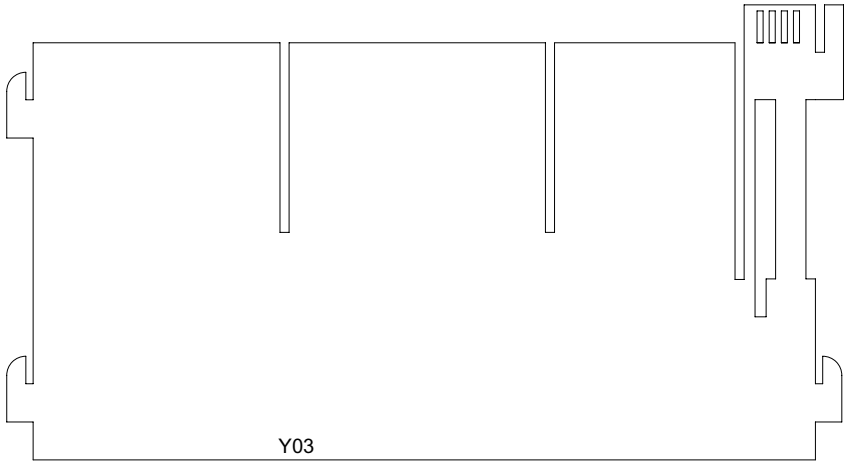
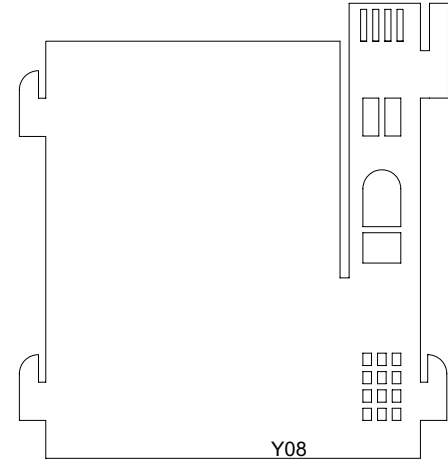
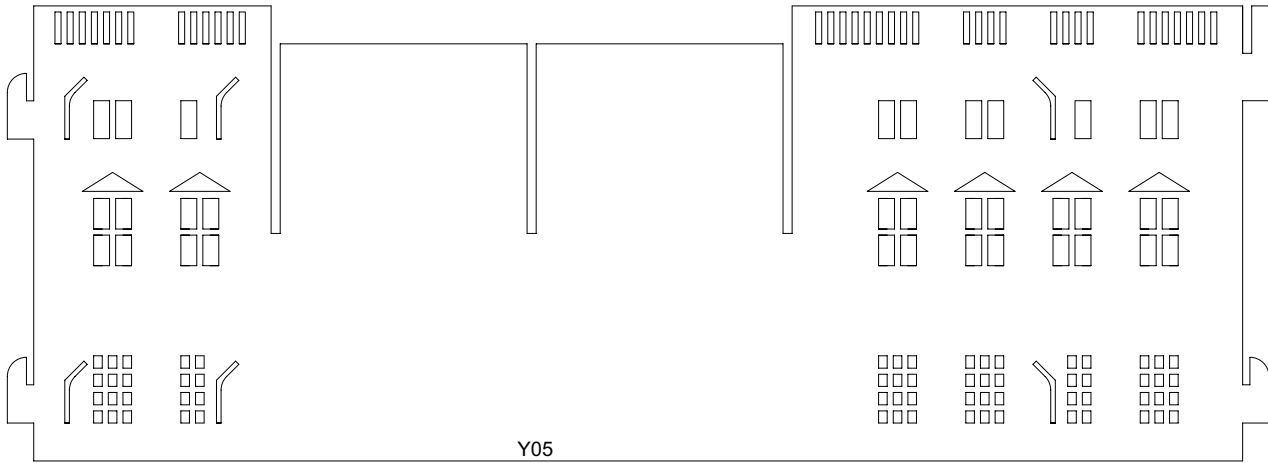
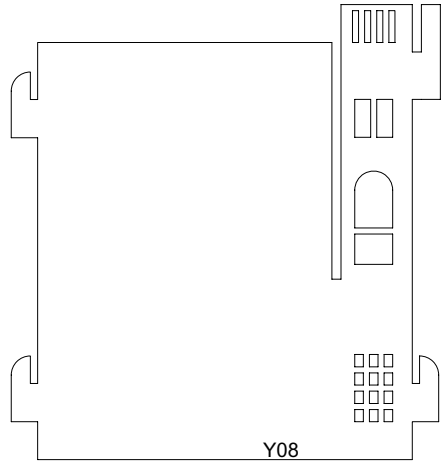
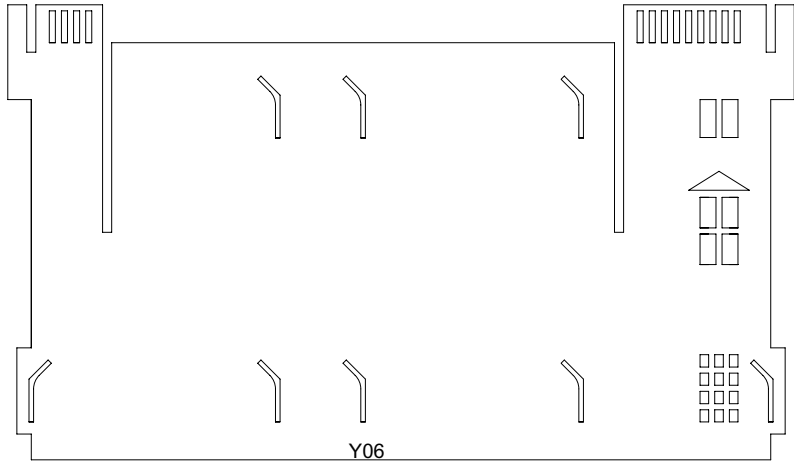
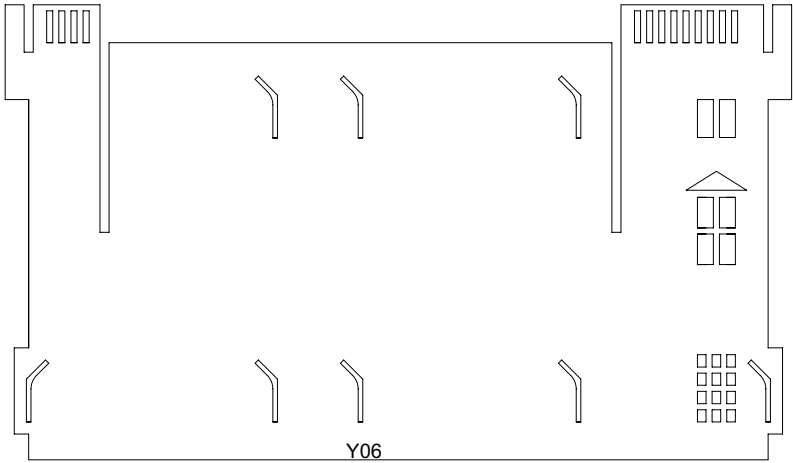


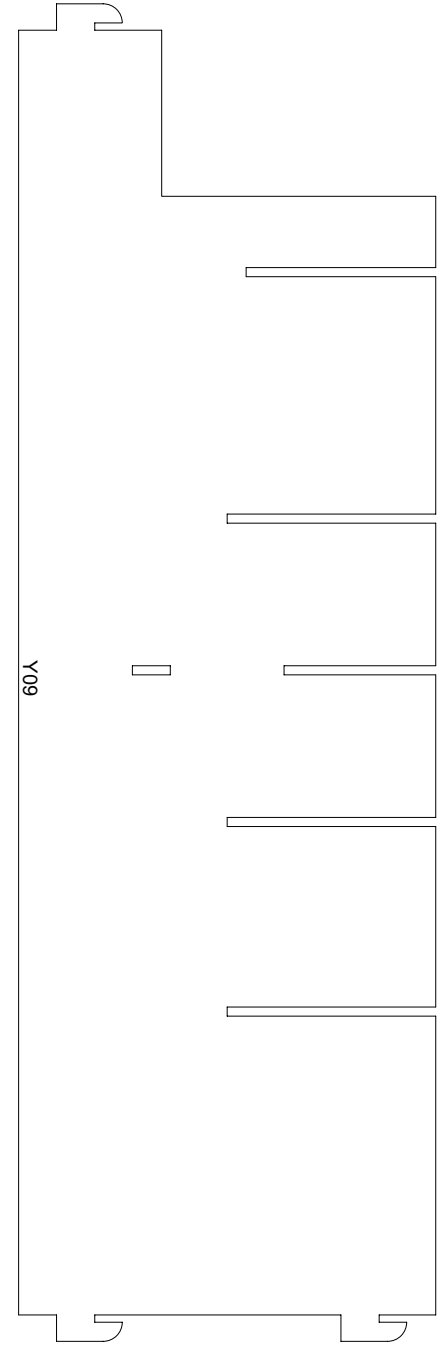
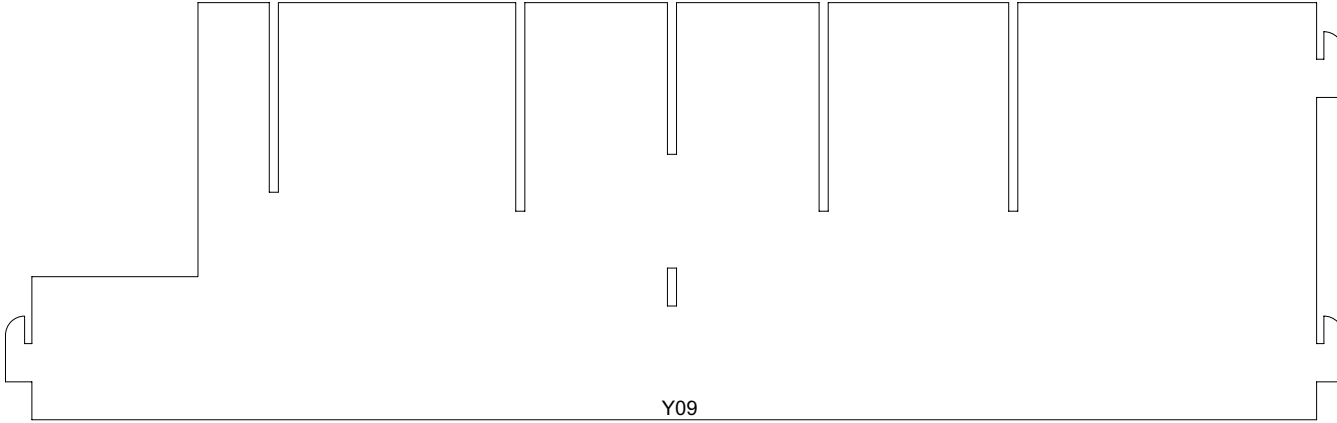
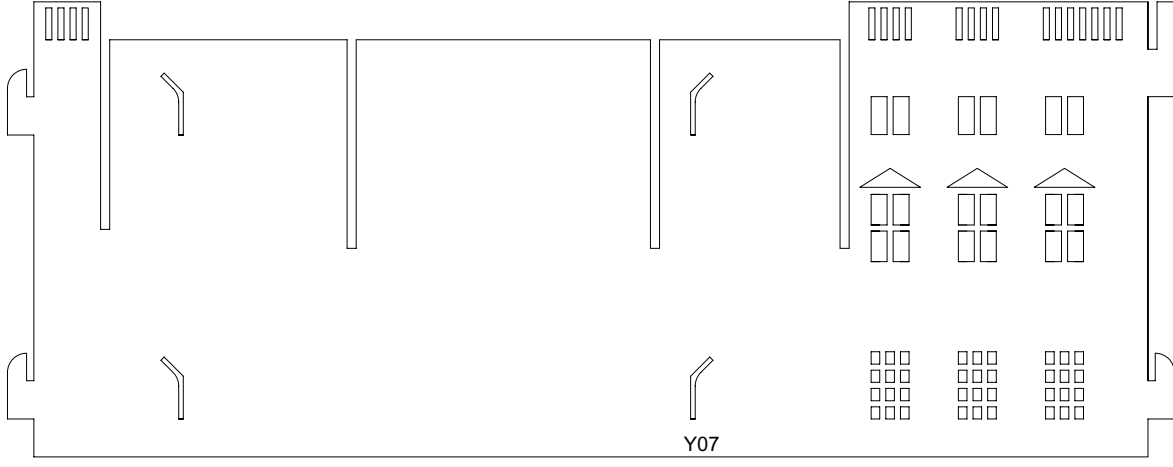
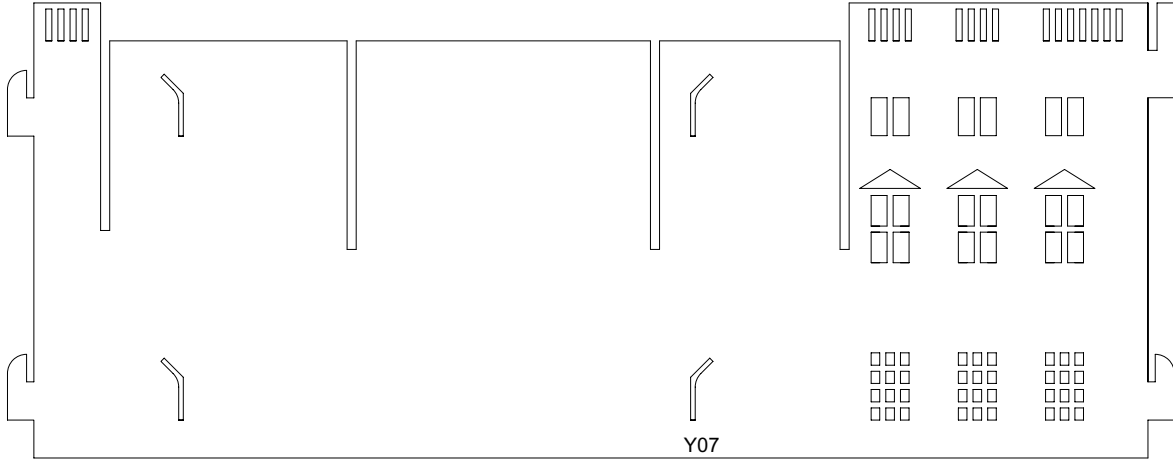
Print on 60lb to 120lb 8.5" x 11" card stock. Scaling 100%.
 Do not use your "fit to paper" option on your printer.

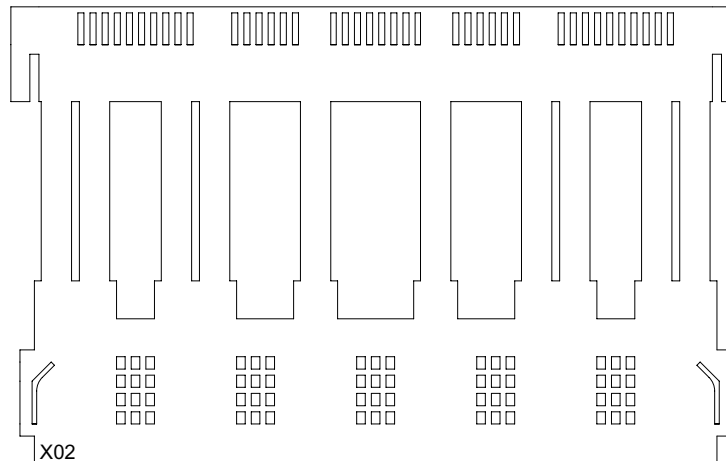
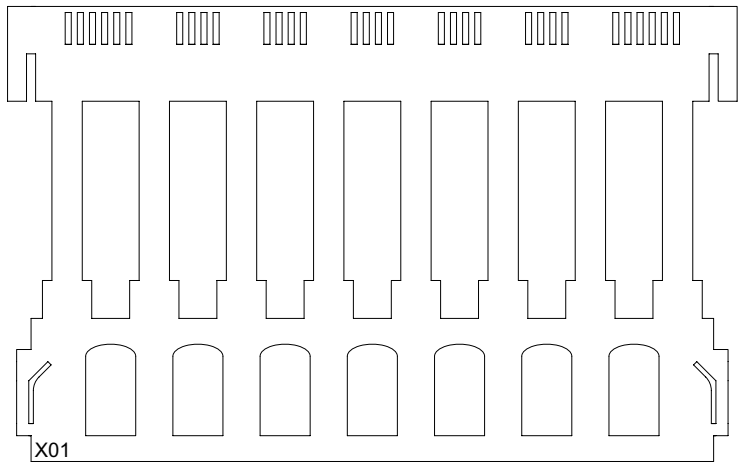
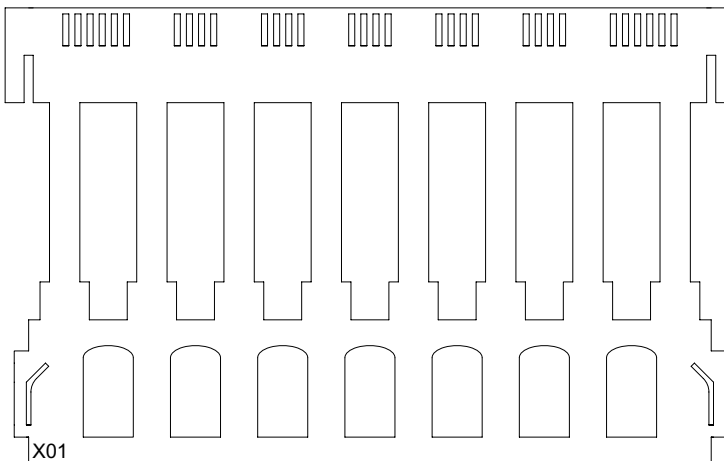
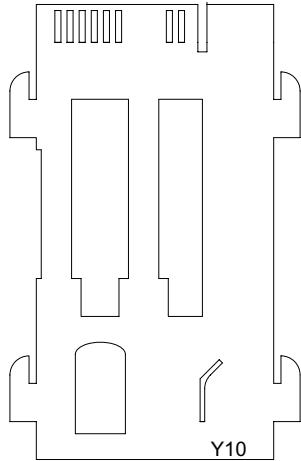
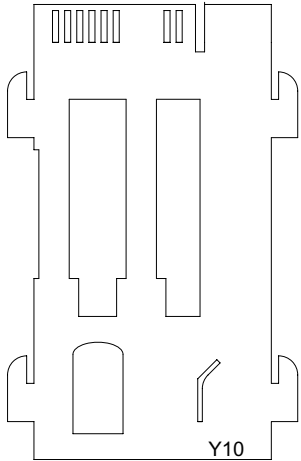




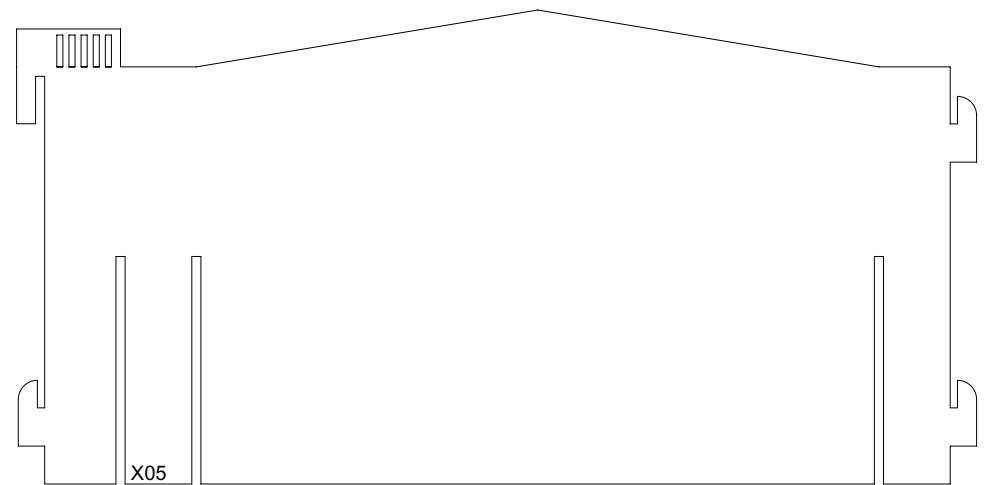
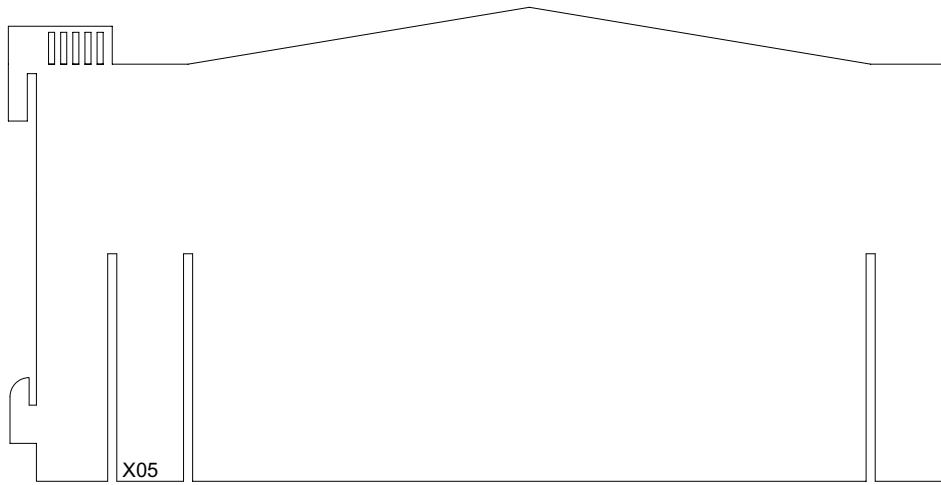
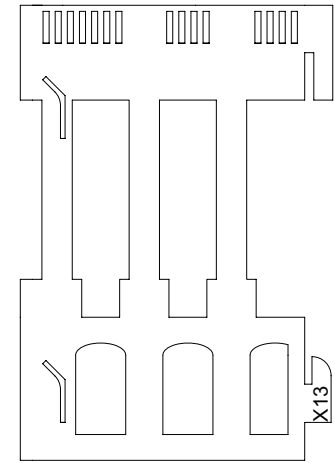
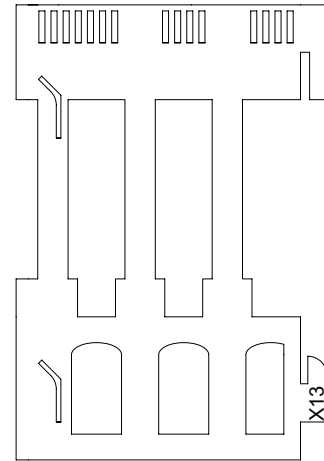
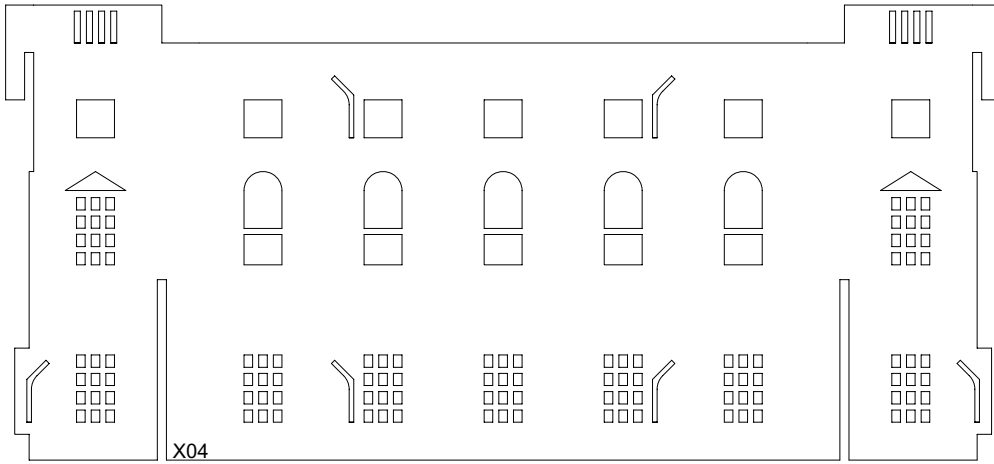
Print on 60lb to 120lb 8.5" x 11" card stock. Scaling 100%. Do not use your "fit to paper" option on your printer.



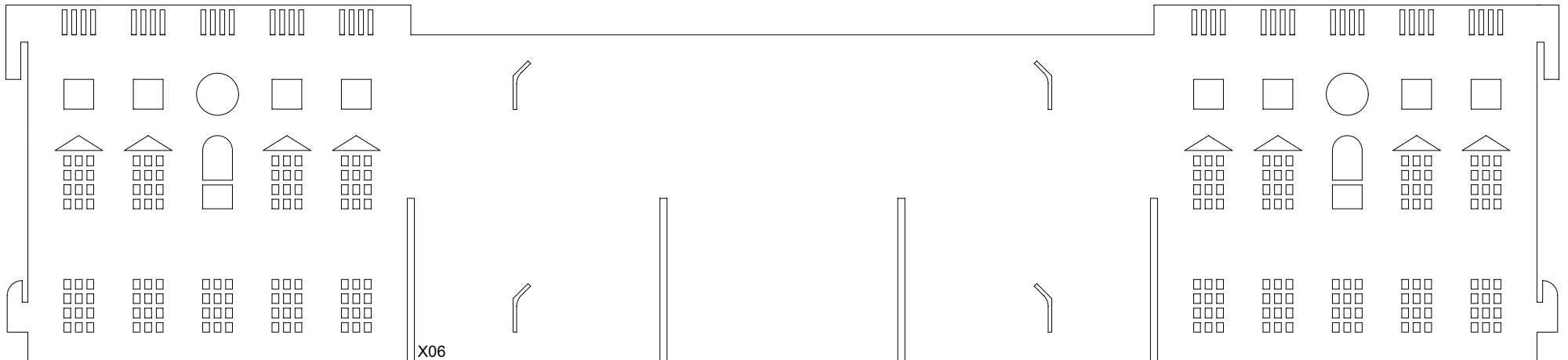


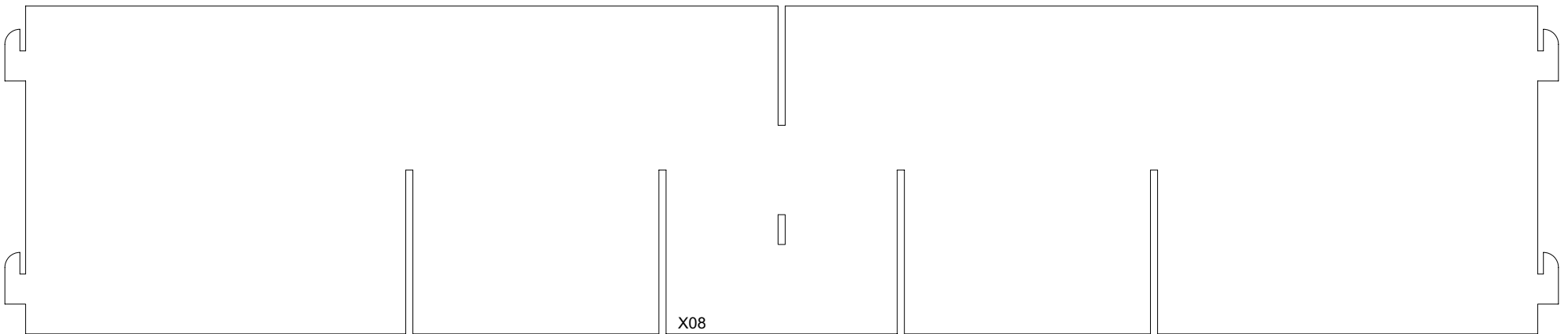
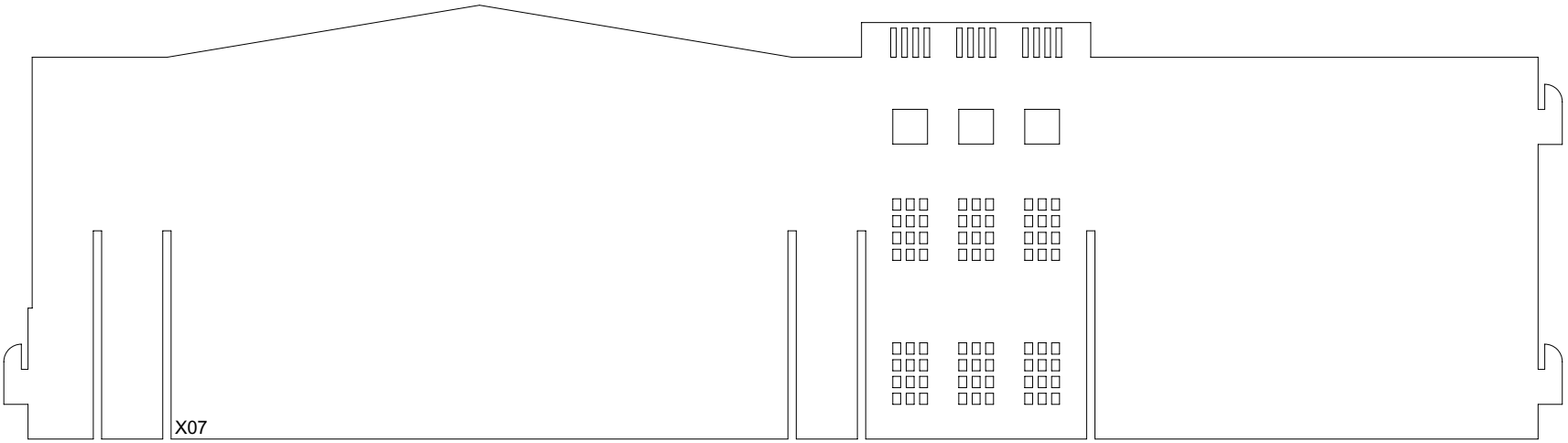
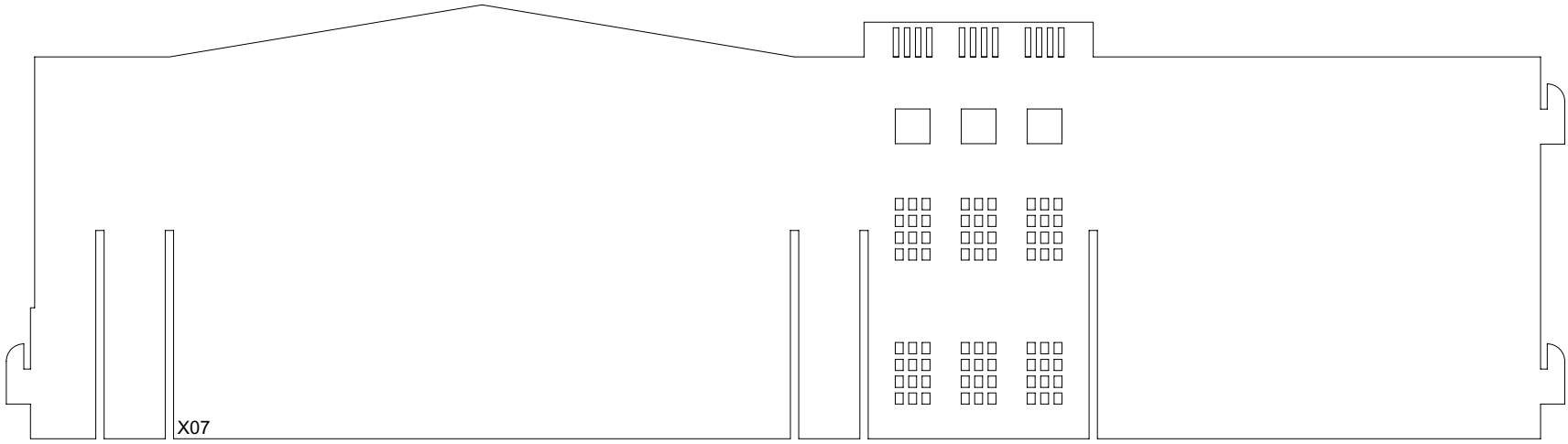


Print on 60lb to 120lb 8.5" x 11" card stock. Scaling 100%. Do not use your "fit to paper" option on your printer.

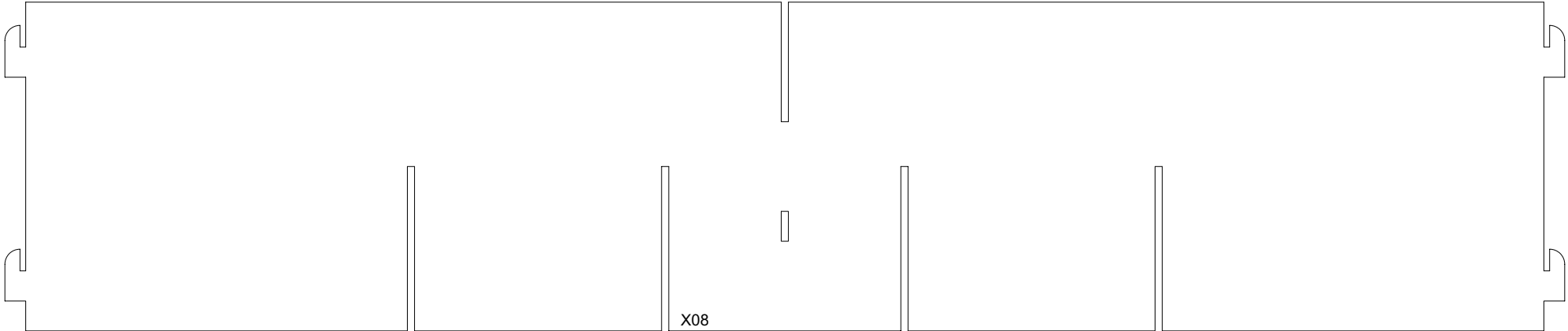
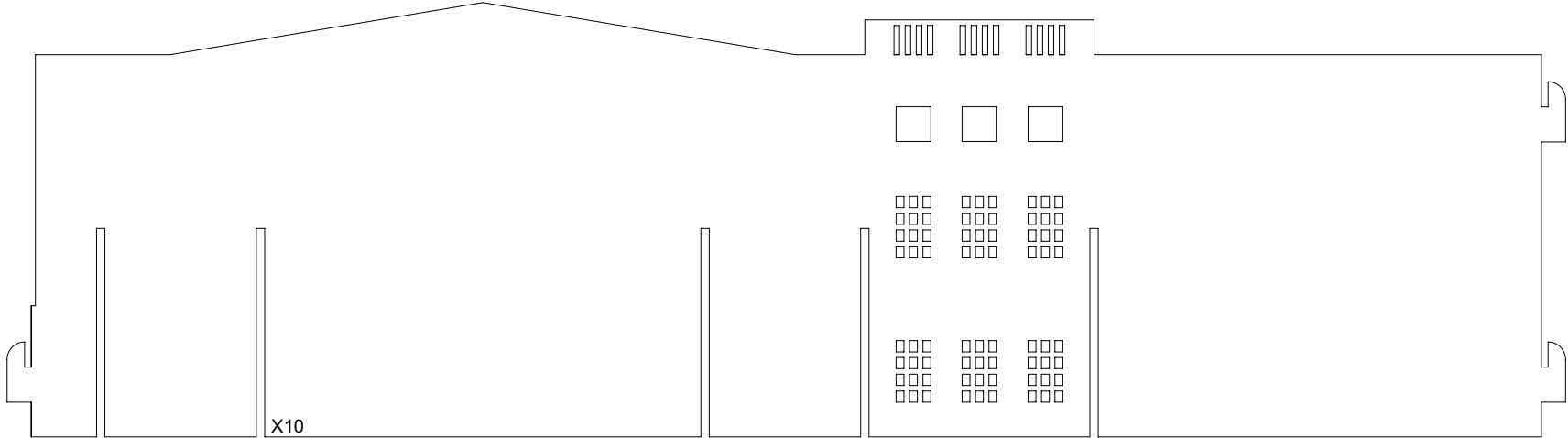
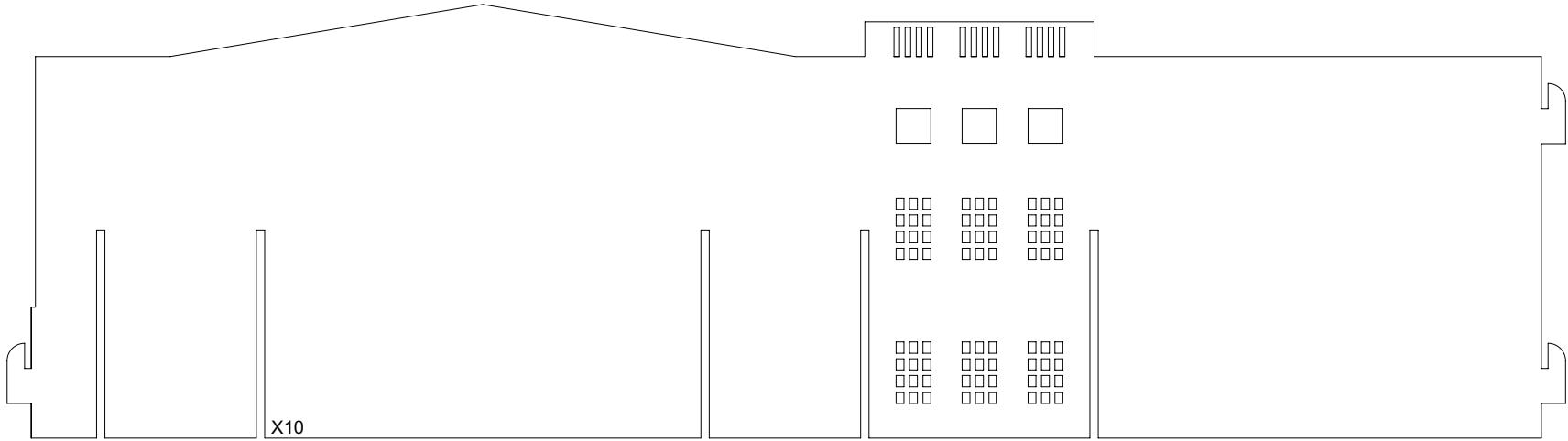


Print on 60lb to 120lb 8.5" x 11" card stock. Scaling 100%. Do not use your "fit to paper" option on your printer.

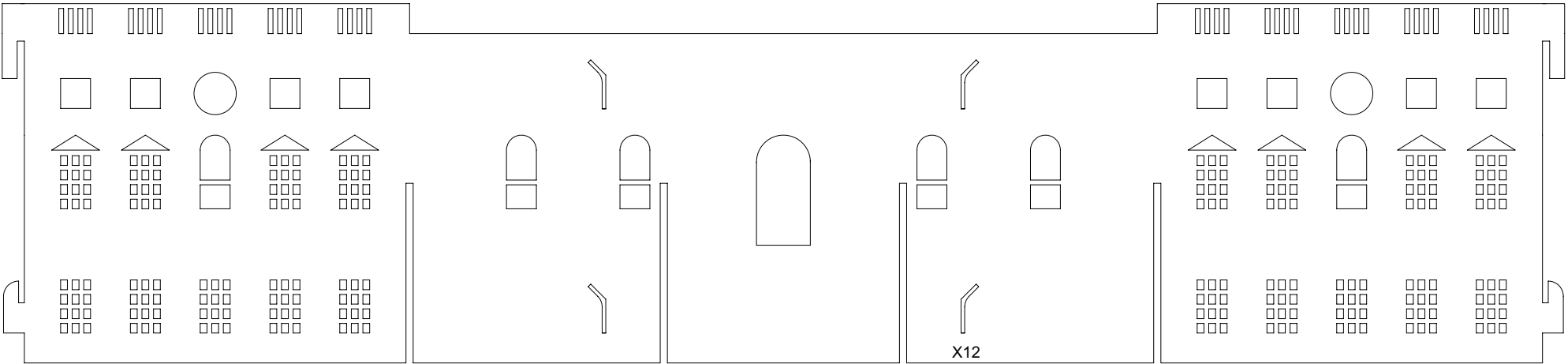
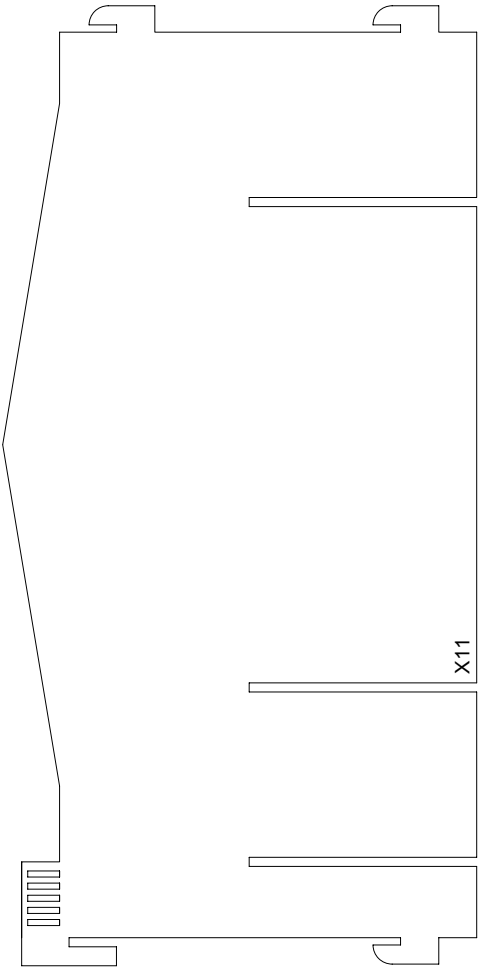
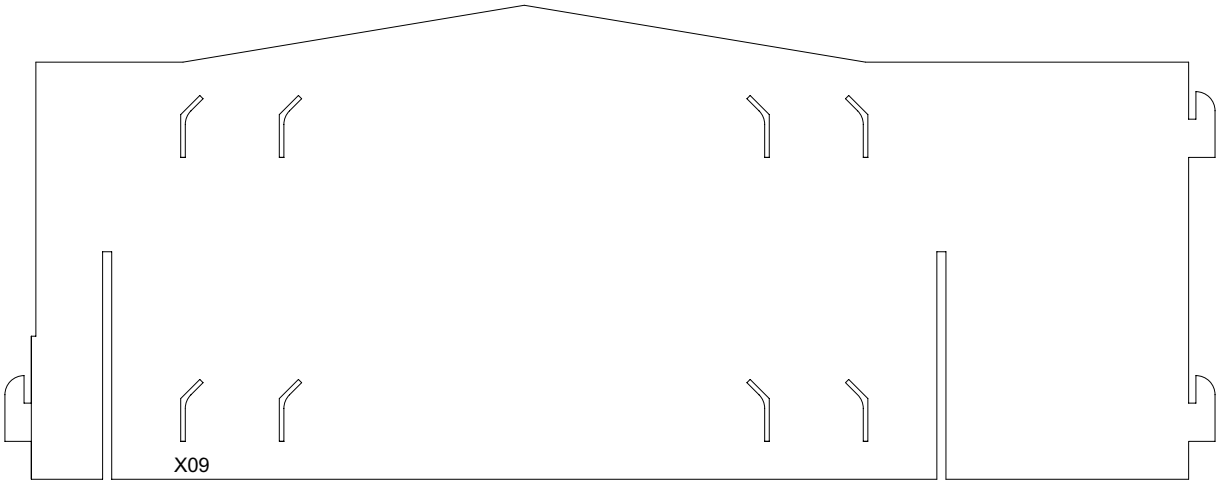
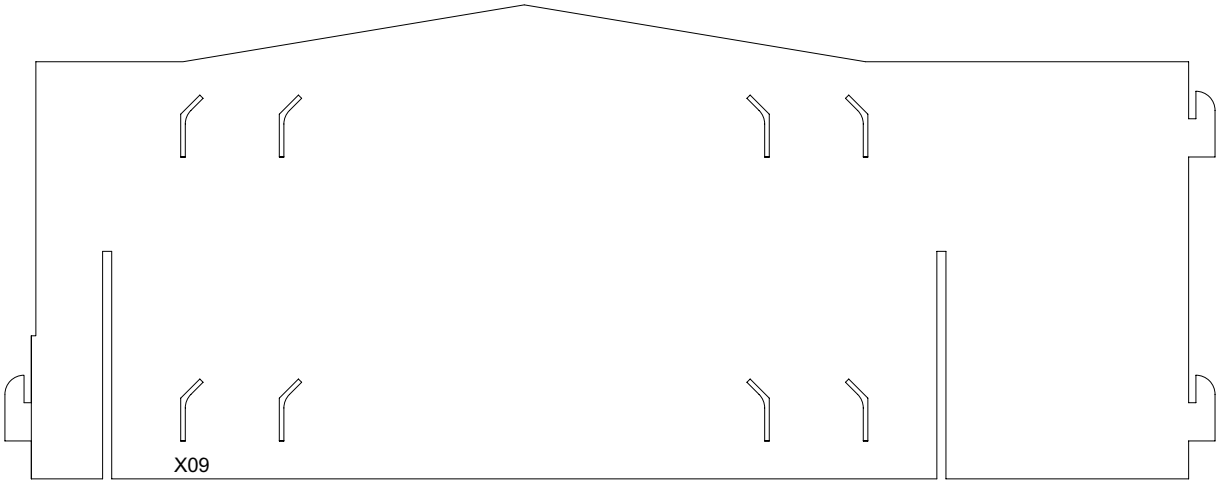




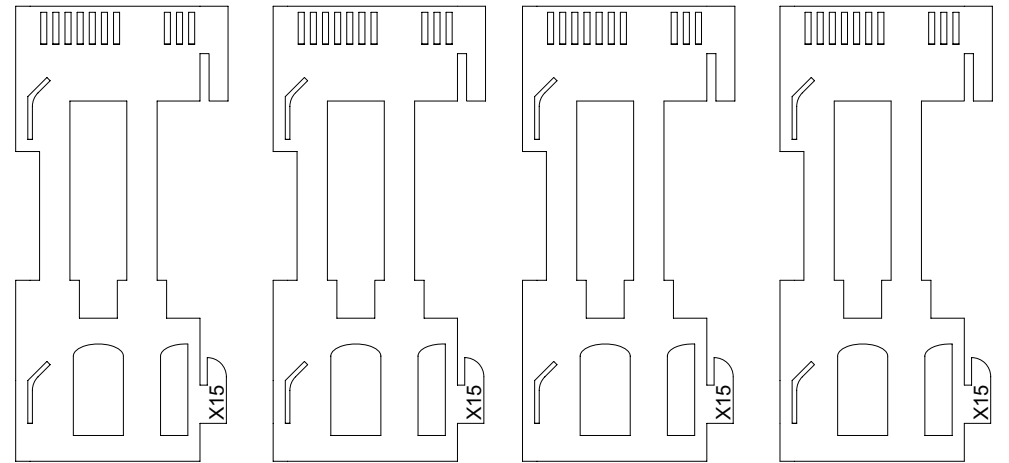
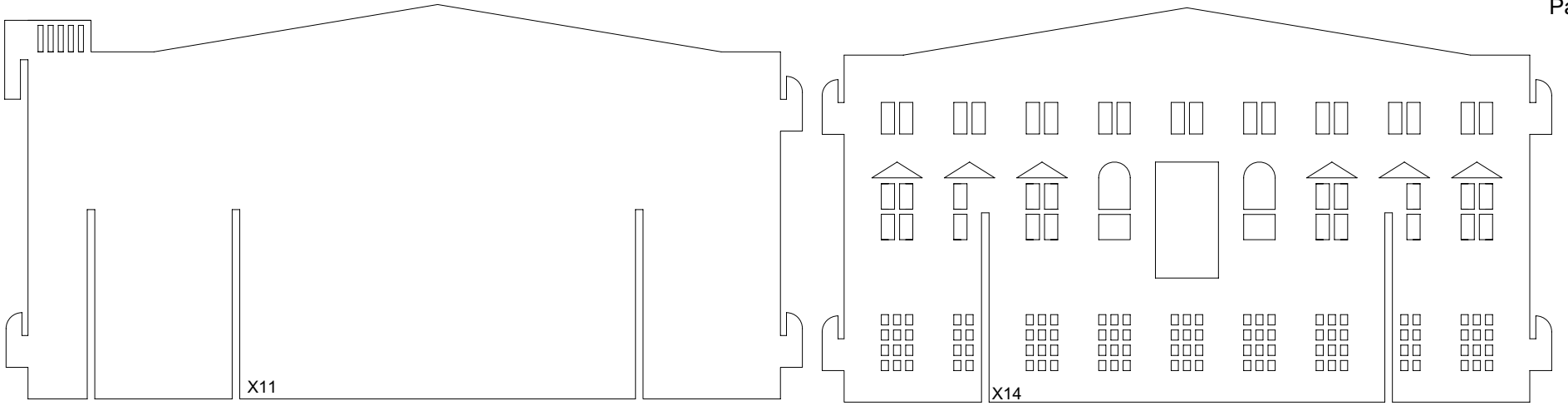
Print on 60lb to 120lb 8.5" x 11" card stock. Scaling 100%.
Do not use your "fit to paper" option on your printer.



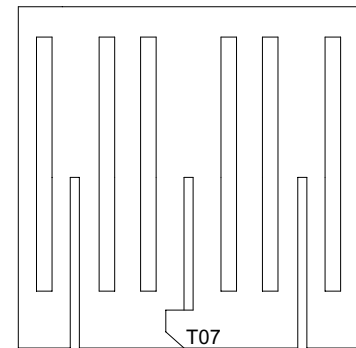
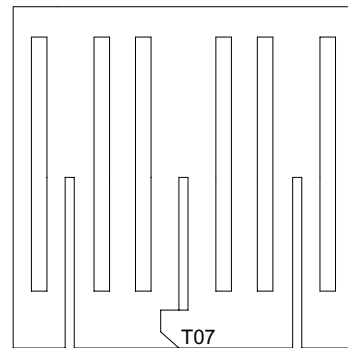
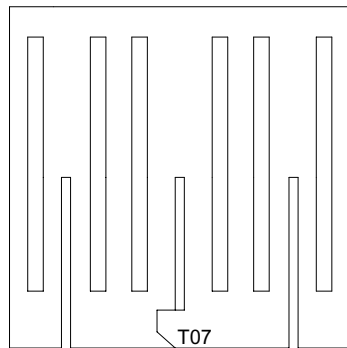
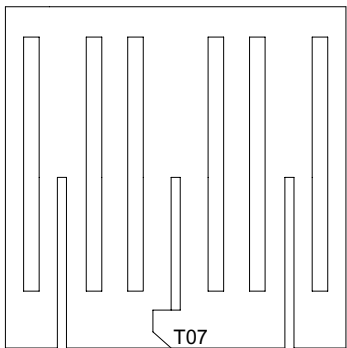
Print on 60lb to 120lb 8.5" x 11" card stock. Scaling 100%.
Do not use your "fit to paper" option on your printer.

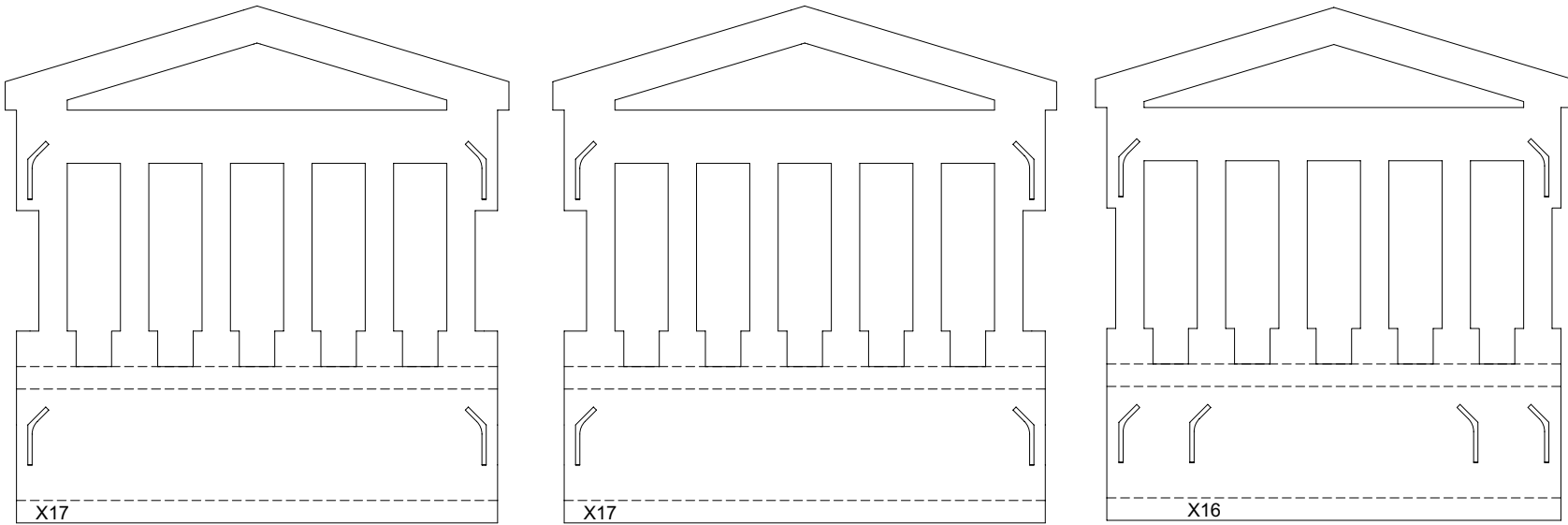


Print on 60lb to 120lb 8.5" x 11" card stock. Scaling 100%.
Do not use your "fit to paper" option on your printer.

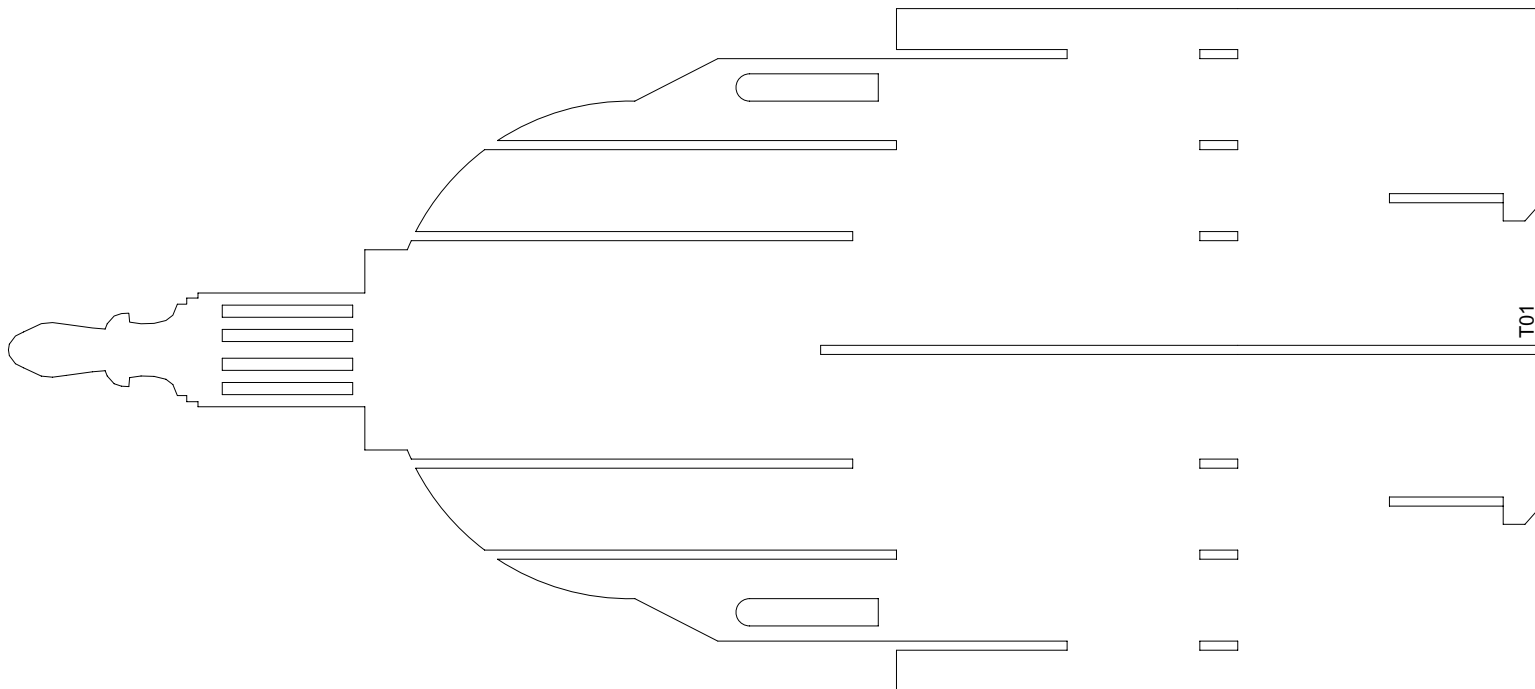


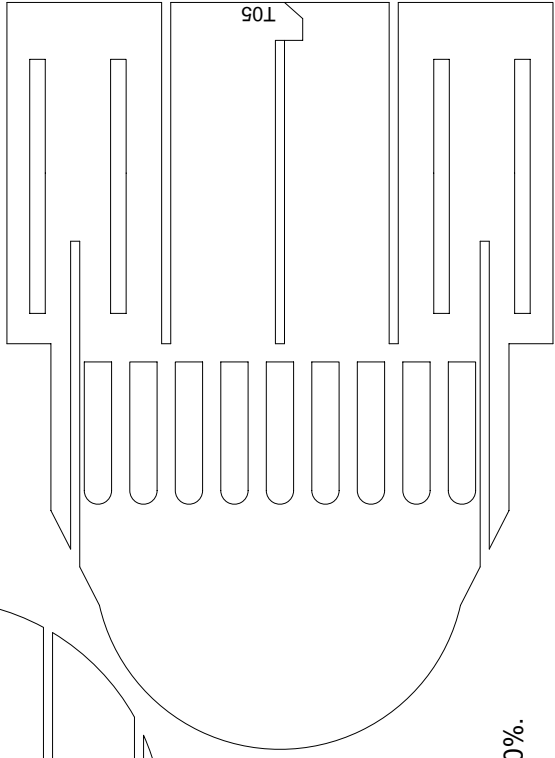
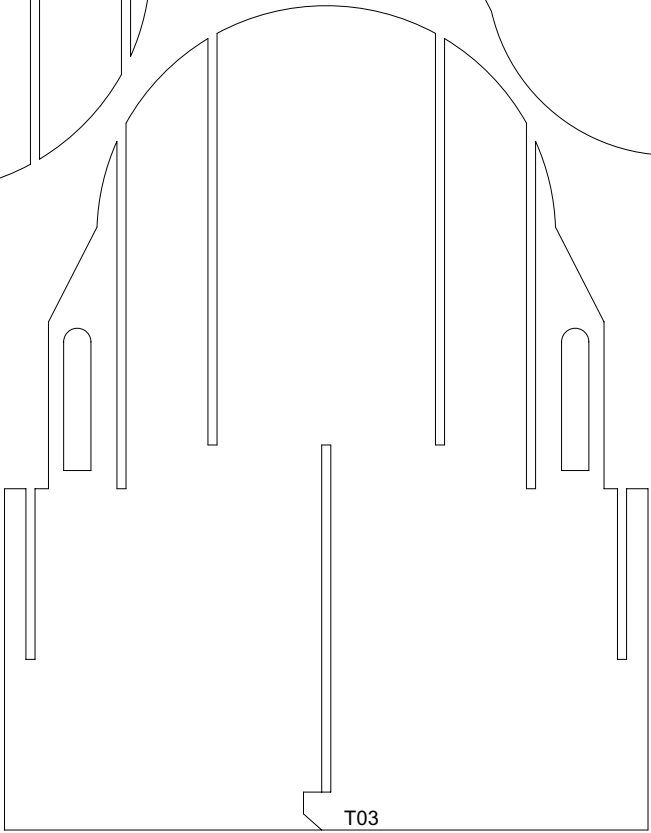
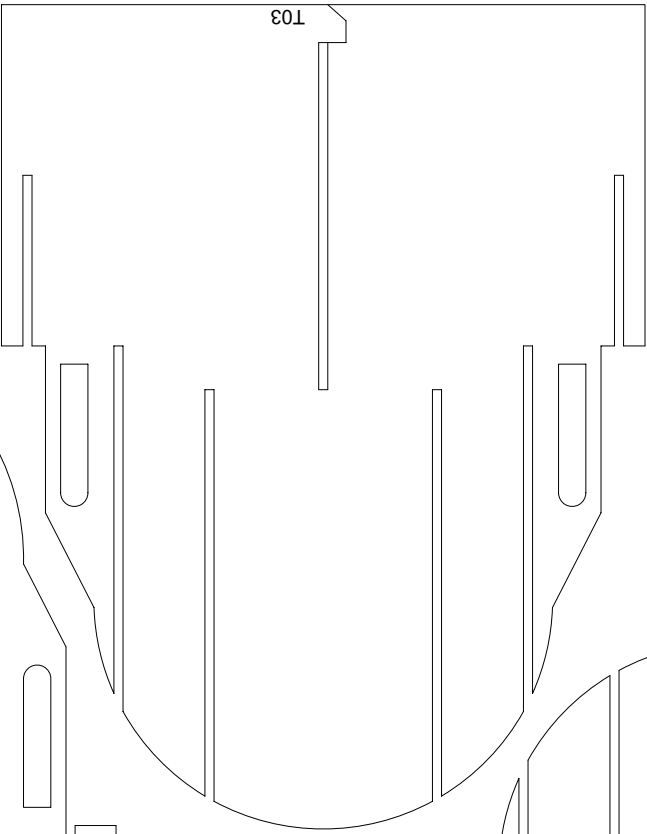
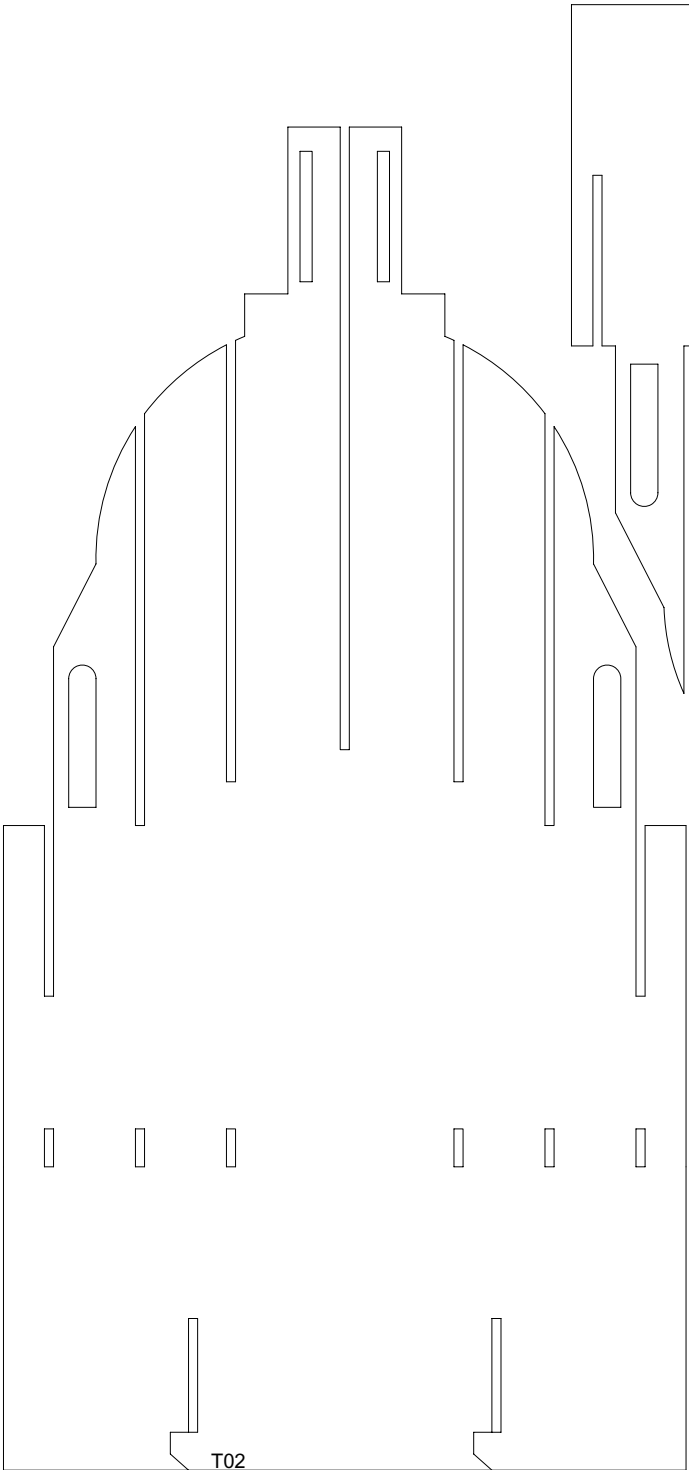
Print on 60lb to 120lb 8.5" x 11" card stock. Scaling 100%. Do not use your "fit to paper" option on your printer.





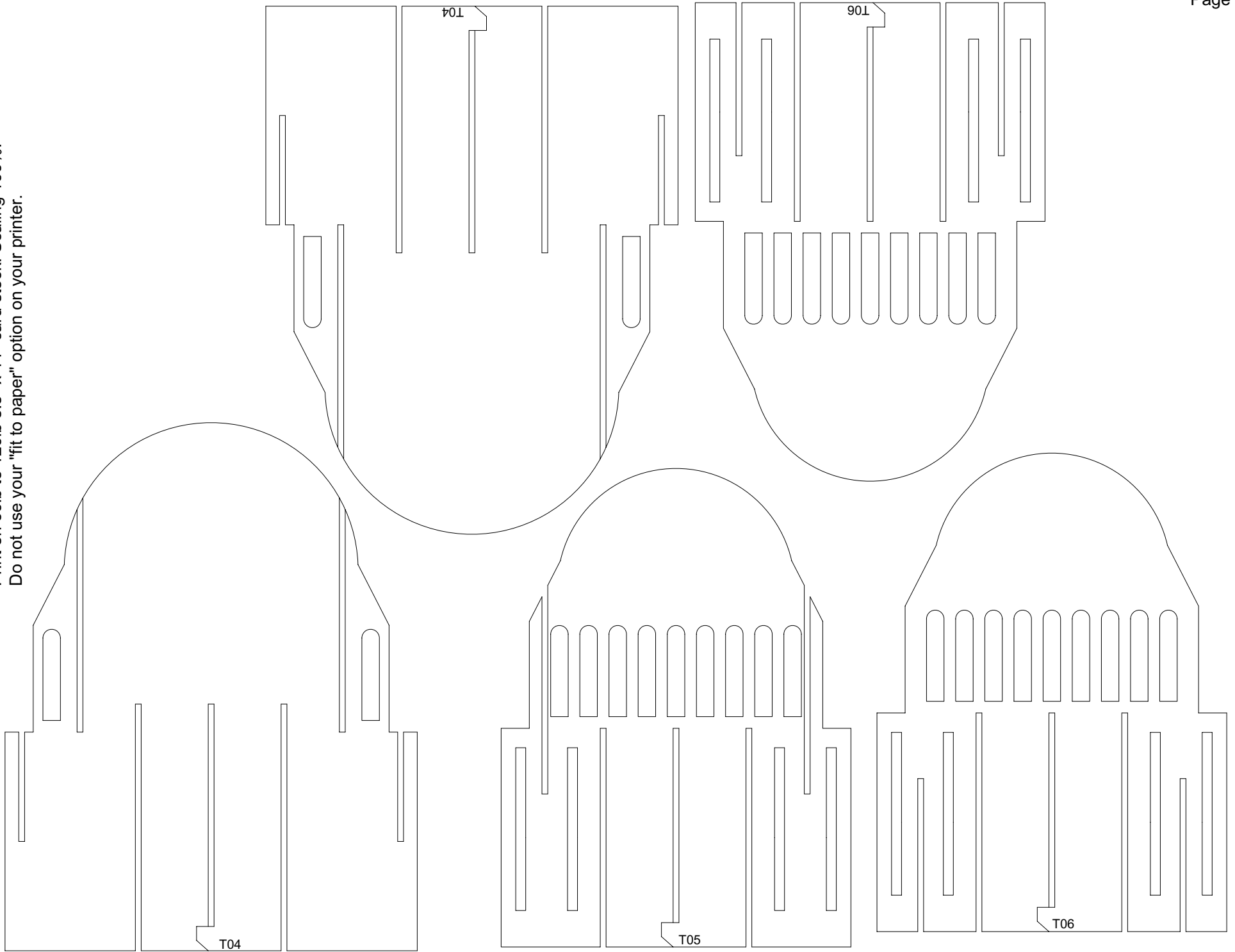
Print on 60lb to 120lb 8.5" x 11" card stock. Scaling 100%. Do not use your "fit to paper" option on your printer.

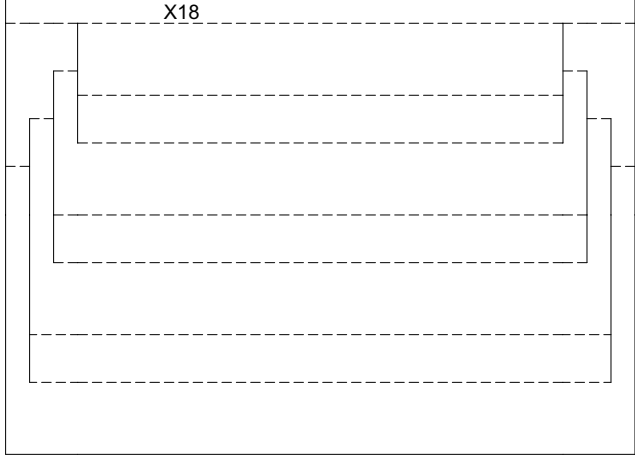
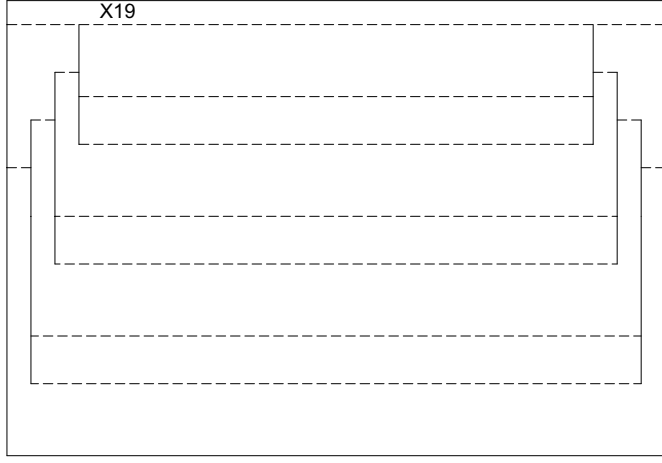
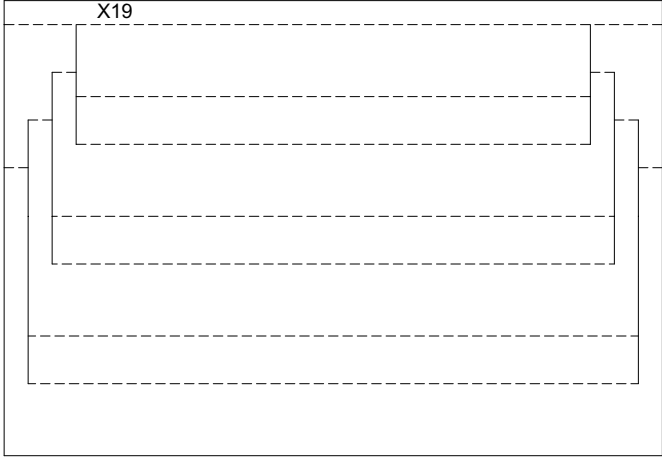




Print on 60lb to 120lb 8.5" x 11" card stock. Scaling 100%.
Do not use your "fit to paper" option on your printer.

Print on 60lb to 120lb 8.5" x 11" card stock. Scaling 100%.
Do not use your "fit to paper" option on your printer.





Don't print this page.

Cut 21" x 16" and 21" x 5.5" stiff cardboards.
Give a paper strip to joint them.
Then, use pencil to draw a 45° line as shown in the figure.

Unit: inch

