



HOKUSAI'S DAUGHTER Word Search

B O E O F E S T I V A L J A U T U M N S
 D J C T Q J W E C H I C K E N H S R O T
 O J G A J D T Y W S B A T K O D H L W I
 L F X Q S K A Q H E O Q S C U I O M R B
 I B F H Q T S E T A U Q J I Q A X N P S
 J G L L E P L A J E S Y T J D J F N S A
 I W W S U P A E P K S P W F P V Y P D M
 B O C Y K F L I P P O H S O A L H V Z U
 W T W Q J R W U N V L I D C N D X F G R
 F B R U S H M M T T L A N X L R P Y T A
 L D Q N I Y B E N Y I Q U O I A X C K I
 J D S K E T C H L W A N Y S B G H Q A Y
 C B L L J L N M R T B J G E E O Y E G T
 N W A T E R F A L L X L C U F N R D S B
 X O U I X A S R A G I S R H M T C I K L

KOINOBORI

PAINTING

WATERFALL

FESTIVAL

APPLAUSE

SAMURAI

CHICKEN

SKETCH

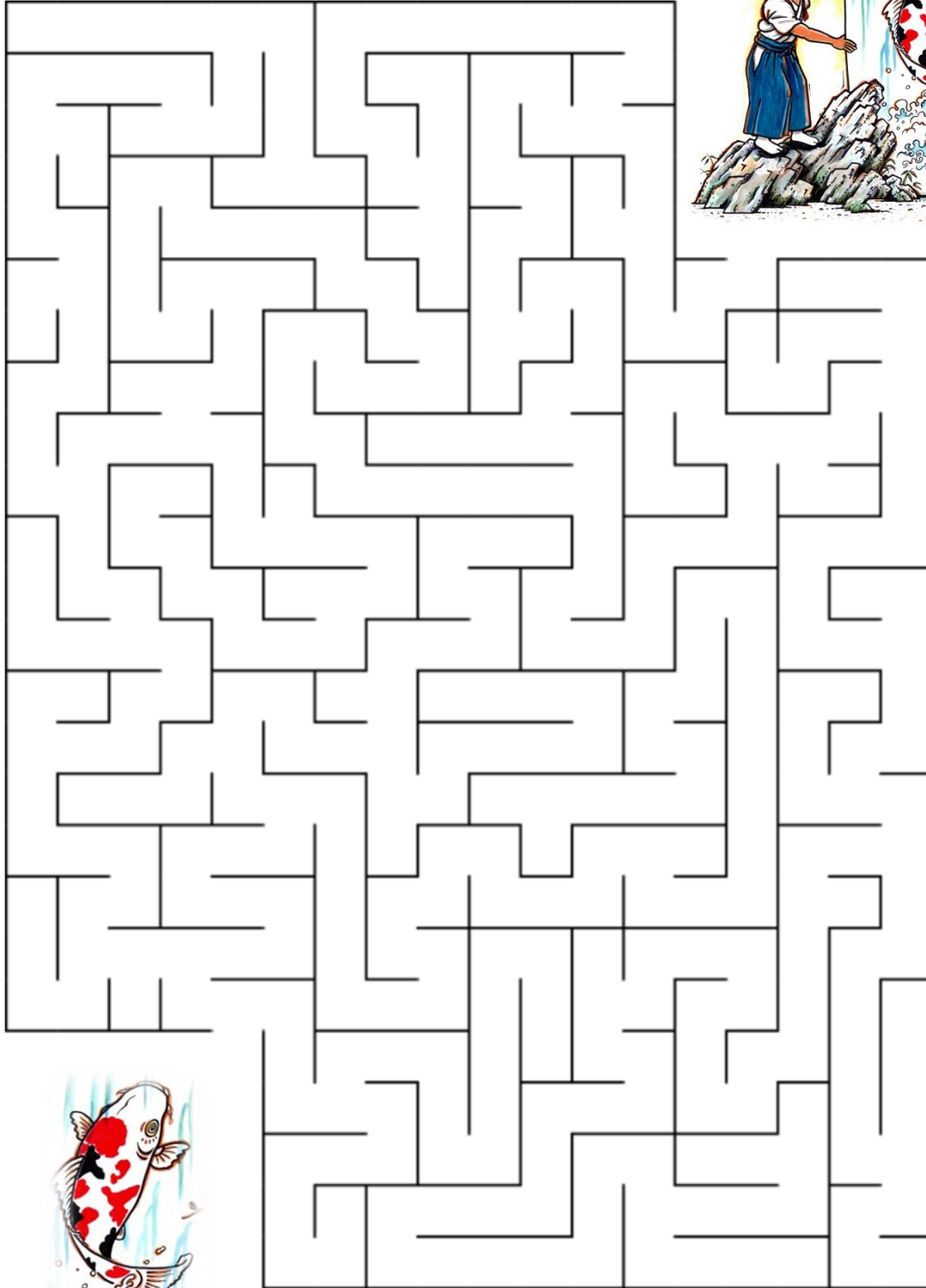
CASTLE

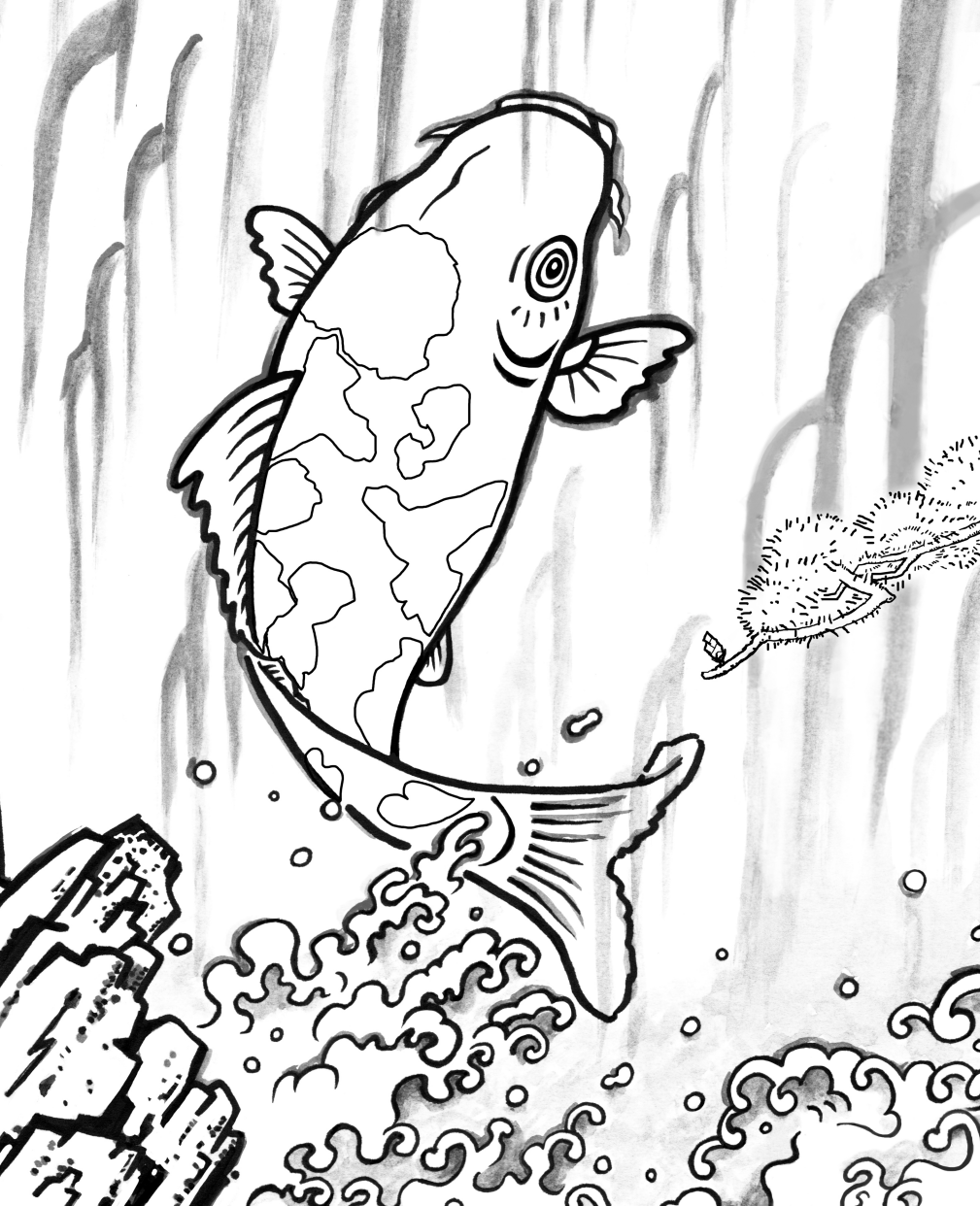
AUTUMN

BRUSH

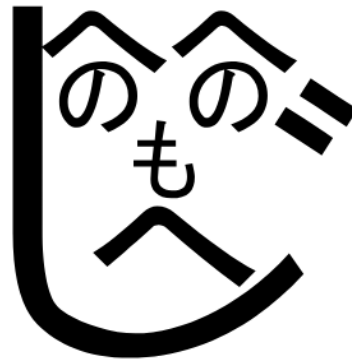
DRAGON

HELP THE KOI CLIMB THE WATERFALL!





Make your own... HENOHENOMOHEJI DRAWING!



じ	の
ji	no
も	へ
mo	he

Heno-heno-mo-he-ji is a way to draw a human face. About 300 years ago, Japanese children started to draw these faces to help them learn how to write! The word breaks down into hiragana alphabet characters: *he* (へ), *no* (の), *he* (へ), *no* (の), *mo* (も), *he* (へ), and *ji* (じ). The first two *he* are the eyebrows, the two *no* are the eyes, the *mo* is a nose, and the last *he* is the mouth. The outline of the face is made by the character *ji*, and its two short strokes form the ear or cheek.

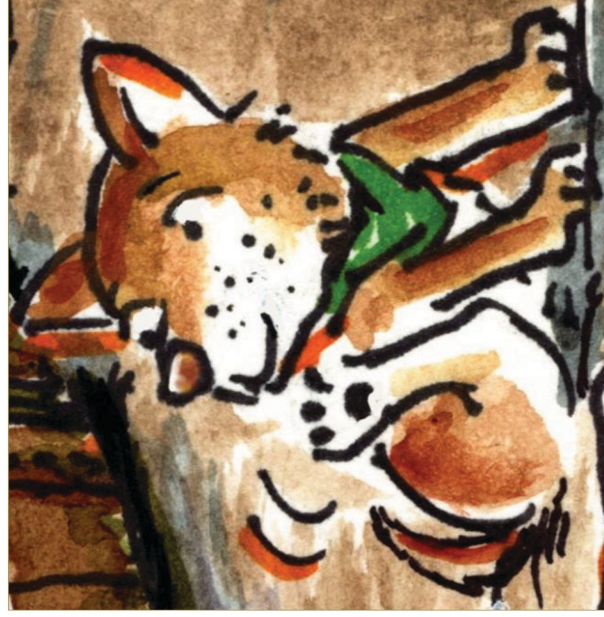
Can you see the face that the two naughty boys drew on the wall?

Now try to make your own henohenomoheji face! Be sure to add extras like hair, a hat, or a body. Be creative!



CAN YOU FIND THE SCRATCHING DOG?

These dog brothers appear in all of Sunny's books. Can you find them?
Draw a line to connect each picture with its book title, and write the page number.



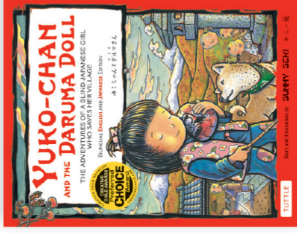
Hokusai's Daughter

Page _____



Yuko-chan and the Daruma Doll

Page _____



The Last Kappa of Old Japan

Page _____

