

Stylish Wraps
Sewing Book

© 2013 Waltham Studios
 Books Publishing Bureau
 10000 Wilshire Blvd, Suite 1000
 Beverly Hills, CA 90210

FULL SIZE PATTERN SHEET
 Patterns are printed on a standard 11x17 inch sheet of paper. Please use a standard 11x17 inch sheet of paper. Do not use a smaller size. Patterns are printed on a standard 11x17 inch sheet of paper. Please use a standard 11x17 inch sheet of paper. Do not use a smaller size. Patterns are printed on a standard 11x17 inch sheet of paper. Please use a standard 11x17 inch sheet of paper. Do not use a smaller size.

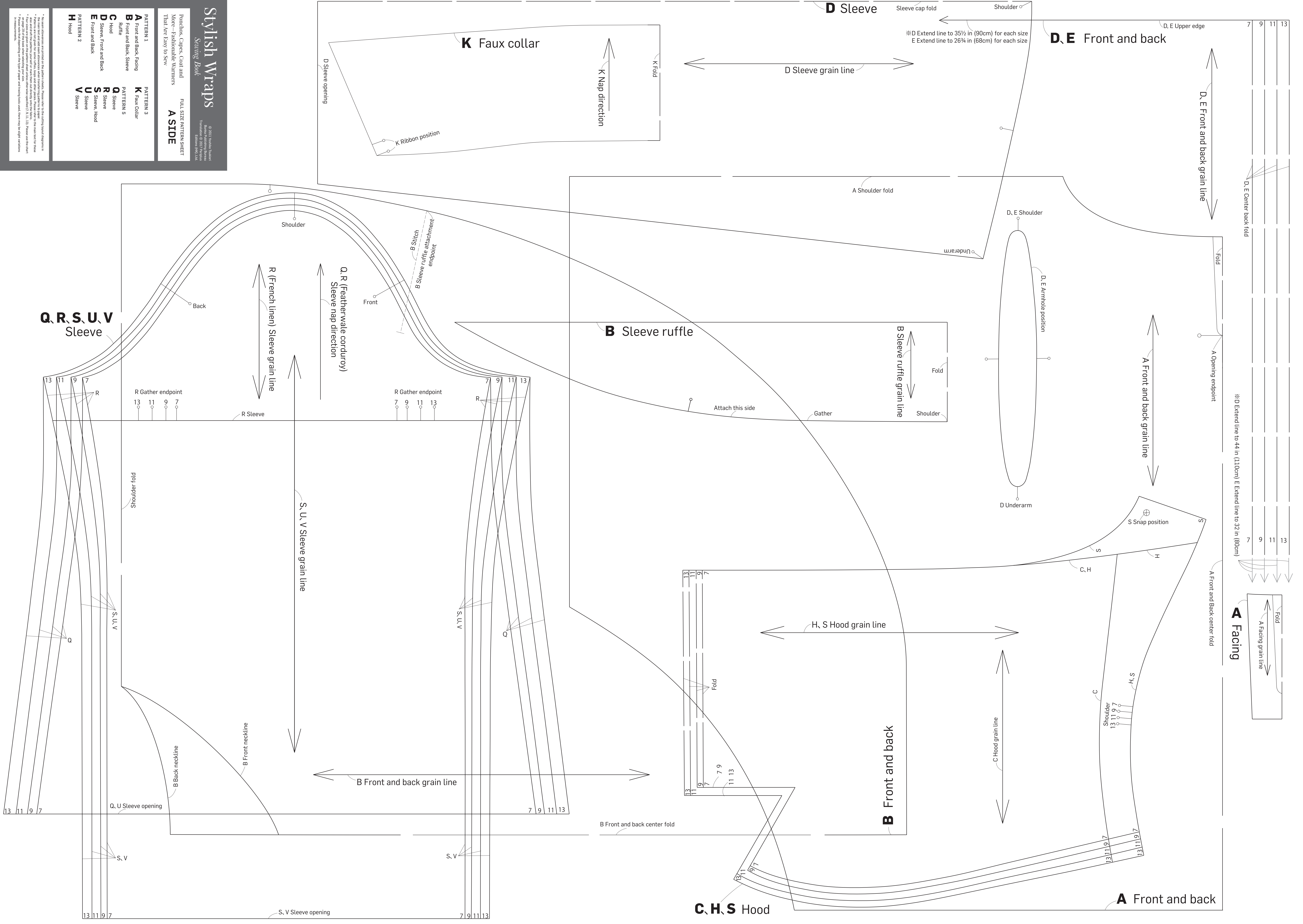
PATTERN 1
A Front and Back, Facing
B Front and Back, Sleeve
C Hood
D Sleeve, Front and Back
E Front and Back
H Hood

PATTERN 2
H Hood

PATTERN 3
K Faux Collar

PATTERN 4
R Sleeve
S Sleeve, Hood
U Sleeve
V Sleeve

PATTERN 5
Q Sleeve
R Sleeve, Hood



7 9 11 13

D, E Center back fold

※D Extend line to 44 in (110cm) E Extend line to 32 in (80cm)

Fold

A Facing grain line

A Facing

7 9 11 13

A Front and Back center fold

A Front and back

D, E Front and back grain line

D, E Upper edge

D, E Front and back

D Sleeve

Sleeve cap fold

Shoulder

※D Extend line to 35½ in (90cm) for each size
 E Extend line to 26¾ in (68cm) for each size

D Sleeve grain line

K Faux collar

K Nap direction

K Fold

D Sleeve opening

K Ribbon position

A Shoulder fold

D, E Shoulder

Underarm

D, E Armhole position

D Underarm

A Front and back grain line

A Opening endpoint

B Sleeve ruffle

B Sleeve ruffle grain line

Fold

Shoulder

Attach this side

Gather

Q, R, S, U, V Sleeve

R (French linen) Sleeve grain line

Q, R (Featherwale corduroy) Sleeve nap direction

R Gather endpoint

7 9 11 13

R Gather endpoint

13 11 9 7

R Sleeve

S, U, V Sleeve grain line

Shoulder fold

S, U, V

S, U, V

Q

B Back neckline

B Front neckline

B Front and back grain line

B Front and back center fold

B Front and back

H, S Hood grain line

C Hood grain line

C, H, S Hood

A Front and back

C

H, S

Shoulder

13 11 9 7

7 9 11 13

7 9 11 13

7 9 11 13

7 9 11 13

S, V

S, V Sleeve opening

7 9 11 13

7 9 11 13

7 9 11 13

7 9 11 13

7 9 11 13

7 9 11 13

7 9 11 13

7 9 11 13

7 9 11 13

7 9 11 13

7 9 11 13

7 9 11 13

7 9 11 13

7 9 11 13

7 9 11 13

7 9 11 13

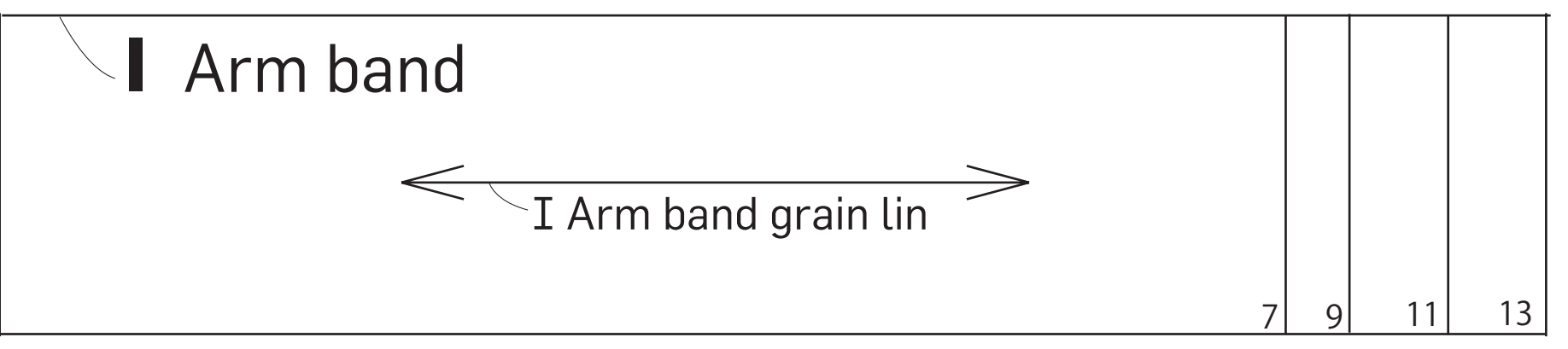
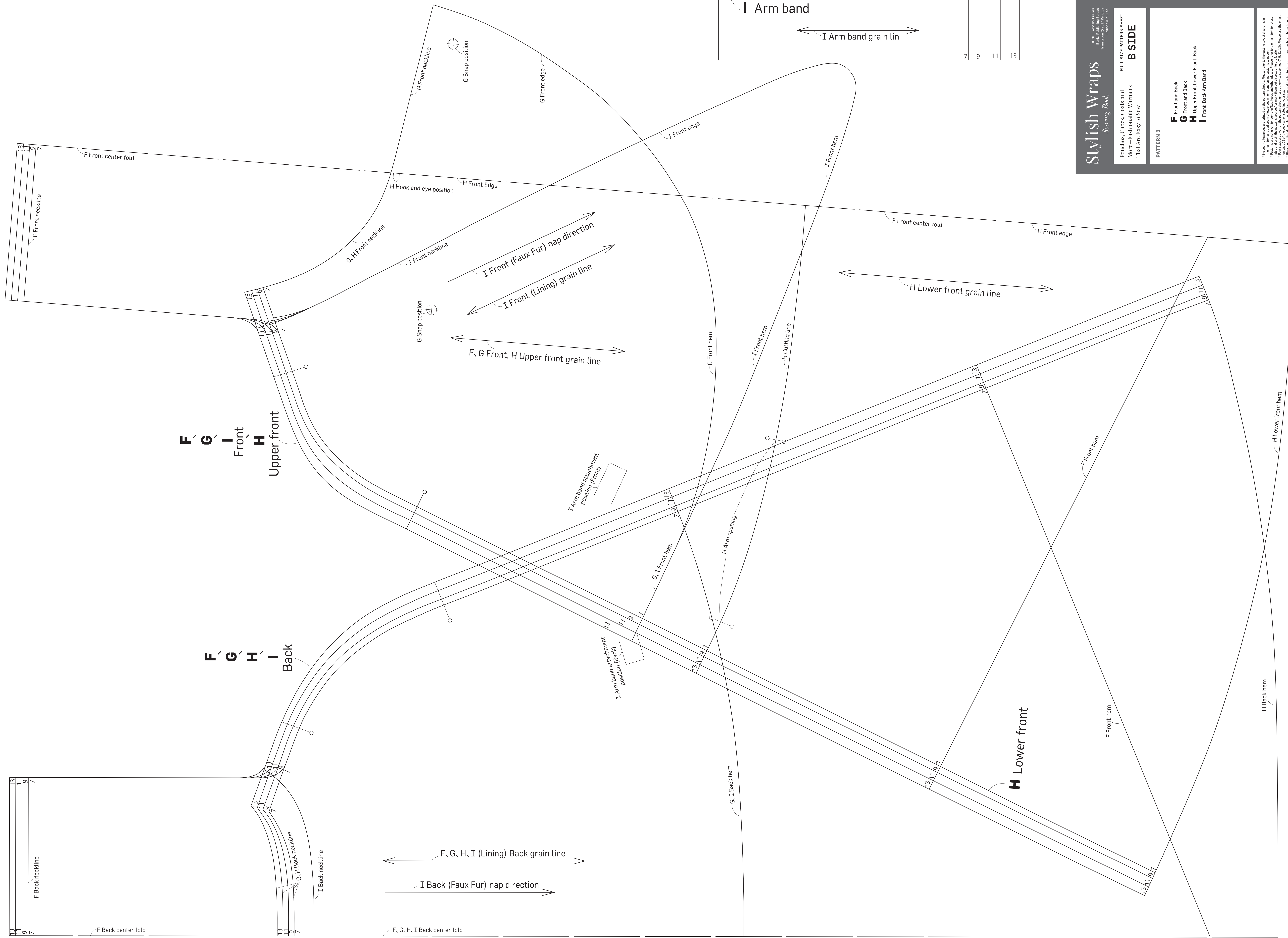
7 9 11 13

7 9 11 13

7 9 11 13

7 9 11 13

7 9 11 13



© 2011 Vogue Fashion Group
 Vogue Sewing Patterns
 Toronto, ON M5S 1B5, Canada
 Editors: JHO, Ltd.

Stylish Wraps
Sewing Book

FULL SIZE PATTERN SHEET
B SIDE

Ponchos, Capes, Coats and
 More—Fashionable Warmers
 That Are Easy to Sew

PATTERN 2

F Front and Back
G Front and Back
H Upper Front, Lower Front, Back
I Front, Back Arm Band

* No seam allowances are printed on this pattern sheet. Please refer to the cutting layout diagrams in the main text and page seam allowances when transferring patterns to paper. The seam allowances also are not printed on these patterns. Please refer to the main text for these allowances. Also, all of the patterns provided are marked with notations for the grain line, the nap direction, and the type of hem. Please refer to the main text for more information on these notations. Please refer to the main text for more information on these notations. Please refer to the main text for more information on these notations.

